

TECHNICAL MANUAL

**DIRECT AND GENERAL SUPPORT AND DEPOT MAINTENANCE
REPAIR PARTS AND SPECIAL TOOLS LISTS**

COMPRESSORS, AIR, RECIPROCATING BASE MOUNTED,

4 CFM, 3000 PSI, ELECTRIC MOTOR DRIVE

(WALTER KIDDE MDL 895026)

FSN 4310-460-2184

(BOGUE ELECTRIC MDL 6703)

FSN 4310-181-8895

**This copy is a reprint which includes
current pages from Change 1.**

CHANGE }
No. 1 }

HEADQUARTERS
DEPARTMENT OF THE ARMY
WASHINGTON, DC, 13 September 1974

**Direct and General Support and Depot Maintenance
Repair Parts and Special Tools List**

**COMPRESSOR, AIR, RECIPROCATING, BASE MOUNTED, 4 CFM, 3000 PSI,
ELECTRIC MOTOR DRIVEN, (WALTER KIDDE MODEL 895026)
FSN 4310-460-2184
(BOGUE ELECTRIC MODEL 6703)
FSN 4310-181-8895**

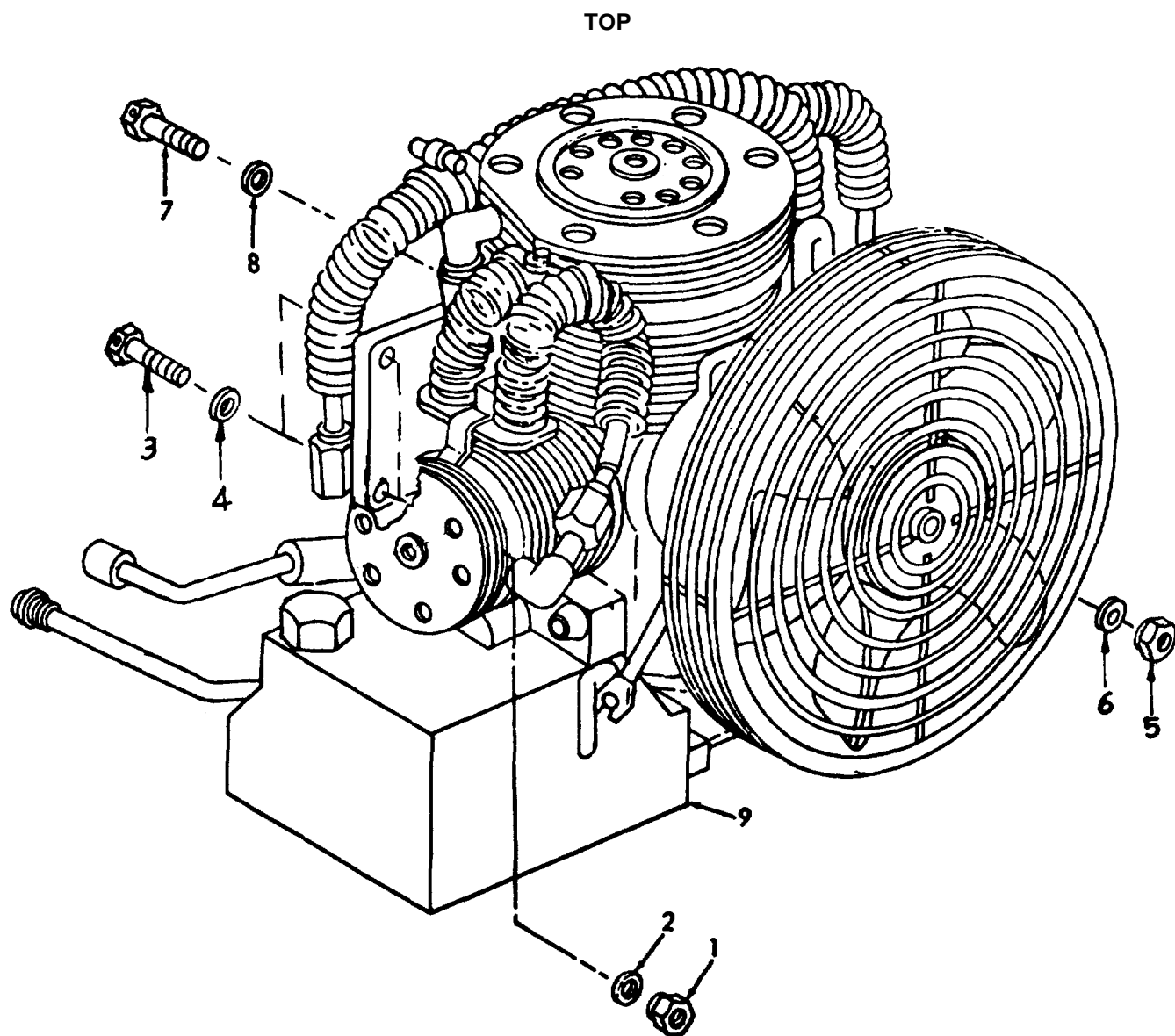
Current as of 1 July 1974

TM 5-4310-343-34P, 9 September 1971, is changed as follows:

Page 1 and 2. Change repair parts list as follows:

Page	Line	Action	(1) SMR Code	(2) Federal Stock Number	(3) Description		(4) Unit of Issue	(5) Qty Inc in Unit Pack	(6) Qty Inc in Unit	(7) 30-Day Ds Maint Allowance			(8) 30-Day Gs Maint Allowance			(9) 1-Yr Alw Per 100 Equip Contgcy	(10) Depot Maint Alw Per 100 Equip	(11) Illustration	
										(a) 1- 20	(b) 21- 50	(c) 51- 100	(a) 1- 20	(b) 21- 50	(c) 51- 100			(a) Fig No.	(b) Item No.
										Index No.	Reference No. & Mfr. Code	Usable On Code							
1	5	Change Col. 3	PF		Bolt, Machine, Compressor to Motor Mfg. 1264-2120 (33525)	A	EA	*	2	*	*	*	*	*	*	*	1	3	
1	7	Change Col. 6 and 6	PF	5310-167-0836	Washer, Flat, Compressor to Motor Mfg. AN960-516(88044)	A	EA	*	2	*	*	*	*	*	*	*	1	4	
1	10	Change Col. 3	PF	5310-167-0820	Washer, Flat, Compressor to Motor Mfg. AN960-516L(88044)	A	EA	*	2	*	*	*	*	*	*	*	1	6	
1	12	Change Col. 3	PF		Bolt, Machine, Compressor 1264-2122 (33525)	A	EA	*	2	*	*	*	*	*	*	*	1	7	
1	14	Change Col. 6	PF	5310-167-0836	Washer, Flat, Compressor to Motor Mfg. AN960-516L(88044)	A	EA	*	2	*	*	*	*	*	*	*	1	8	
2	1	Change Col. 3	PO	4310605-0259	Filter, Air Inlet 204033 (33525)		EA	*	1	*	*	*	*	*	*	*	2	6	

Page 30. Delete Figure 1. Compressor and Substitute Figure 1. Compressor as included herein.



ME 4310-343-34P/1

Figure 1. Compressor.

Page 2. Change repair list as follows:

Usable on code	Fig. No.	Item No.	From	To
	2	6	P/N 241077	P/N 204033

Page 50, 51, 52. Change Index as follows:

Page	Line	Action	Refer. No.	Mfg. code	Fig. No.	Item No.
50	63	Change Item No.	AN960-516	88044	1	4
50	64	Change Item No.	AN960-516L	88044	1	6

Page	Line	Action	Refer. No.	Mfg. code	Fig. No.	Item No.
51	80	Change Item No.	1264-2120	33525	1	3
51	81	Change Item No.	1264-2122	33525	1	7
52	9	Delete following:	241077	33525	2	6
52	10	Add following:	204033	33525	2	6

By Order of the Secretary of the Army:

Official:

CREIGHTON W. ABRAMS
General, United States Army
Chief of Staff

VERNE L. BOWERS
Major General, United States Army
The Adjutant General

Distribution:

To be distributed in accordance with DA Form 12-37A (qty rqr block No. 679), Direct/General Support requirements for Airborne Armoured Assault Vehicle M551.

Technical Manual }
 No. 5-4310-343-34P }

HEADQUARTERS
 DEPARTMENT OF THE ARMY
 Washington, D. C., 9 September 1971

**DIRECT AND GENERAL SUPPORT AND DEPOT
 MAINTENANCE REPAIR PARTS AND SPECIAL TOOL LISTS
 COMPRESSORS, AIR, RECIPROCATING BASE MOUNTED,
 4 CFM, 3000 PSI, ELECTRIC MOTOR DRIVE
 (WALTER KIDDE MDL 895026) FSN 4310-460-2184
 (BOGUE ELECTRIC MDL 6703) FSN 4310-181-8895**

Current as of 30 August 1971

		Listing Page	Illus Figure
Section	I. INTRODUCTION		
	II. REPAIR PARTS FOR DIRECT AND GENERAL SUPPORT AND DEPOT MAINTENANCE	1	
Group	01. Compressor Assembly	1	1
	Air inlet filter.....		2
	Compressor lines, fittings 2nd fan		3
	Oil pump.....		4
	1st stage assembly		5
	2nd stage assembly		6
	3rd stage assembly.....		7
	4th stage assembly		8
	Compressor components		9
Group	02. Moisture Separator.....	11	
	Moisture separator and valve (A)		10
	Moisture separator and valve (B)		11
	Moisture separator components		12
	03. Pressure Switch.....	16	13
	Pressure switch components		14
	04. Electric Motor	18	
	Electric motor and related parts (A)		15
	Electric motor components (A).....		16
	Electric motor and related parts (B)		17
	Electric motor components (B)		18
	05. Kits and Sets		
Section	III. SPECIAL TOOLS, TEST AND SUPPORT EQUIPMENT FOR DIRECT SUPPORT, GENERAL SUPPORT AND DEPOT MAINTENANCE (NOT APPLICABLE)		
	IV. FEDERAL STOCK NUMBER AND REFERENCE NUMBER INDEX		48

*This manual supersedes TM 5-4310-343-34P, 3 March 1971.

**SECTION I
INTRODUCTION**

1. Scope

a. This manual lists repair parts, special tools, test and support equipment required for the performance of direct support, general support, and depot maintenance of the compressor.

b. Repair parts listed represent those authorized for use at indicated maintenance levels and will be requisitioned (on an "as required" basis until stockage is justified by demand in accordance with AR 735-35 or AR 710-2).

2. General

This Repair Parts and Special Tools List is divided into the following sections:

a. *Repair Parts - Section II.* A list, in figure and item number sequence, of repair parts authorized for the performance of maintenance at the direct support, general support, and depot level, including those items which must be removed for replacement of the authorized item. Items, except kits and sets, are listed by assembly groups in top down breakdown sequence. Repair parts kits and sets are listed separately as Group 05 at the end of the Repair Parts List without regard to the assembly group to which they belong. Components of the kits and sets are listed in their proper sequence in the assembly group to which they belong and are referenced to the FSN of the kit or set.

b. *Special Tools, Test and Support Equipment - Section III.* A list of special tools, test and support equipment authorized for the performance of maintenance at the direct support, general support, and depot level. (Not applicable.)

c. *Federal Stock Number and Reference Number Index - Section IV.* A list of Federal stock numbers in ascending numerical sequence followed by a list of reference numbers in ascending alphanumeric sequence, cross-referenced to the illustration figure number and item number.

NOTE

Items not illustrated are cross-referenced to group number.

3. Explanation of Columns

The following provides an explanation of columns in the tabular lists in Sections II and III:

a. *Source, Maintenance, and Recoverability Code (SMR).*

(1) Source code indicates the source for the listed items. Source codes are:

<i>Code</i>	<i>Explanation</i>
P	Repair Parts, Special Tools and Test Equipment supplied from GSA/DSA, or Army supply system, and authorized for use at indicated maintenance levels.
P2	Repair Parts, Special Tools and Test Equipment which are procured and stocked for insurance purposes because the combat or military essentiality of the end item dictates that a minimum quantity be available in the supply system.
M	Repair Parts, Special Tools and Test Equipment which are not procured or stocked, as such, in the supply system but are to be manufactured at indicated maintenance levels.
A	Assemblies which are not procured or stocked as such, but are made up of two or more units. Such component units carry individual stock numbers and descriptions, are procured and stocked separately and can be assembled to form the required assembly at indicated maintenance levels.
X	Parts and assemblies that are not procured or stocked because the failure rate is normally below that of the applicable end item or component. The failure of such part or assembly should result in retirement of the end item from the supply system.
X1	Repair Parts which are not procured or stocked, The requirement for such items will be filled by the next higher assembly or component.
X2	Repair Parts, Special Tools, and Test Equipment which are not stocked and have no foreseen mortality. The indicated maintenance level requiring such repair parts will attempt to obtain the parts through cannibalization or salvage, if not obtainable through cannibalization or salvage, the item may be requisitioned with exception data, from the end item manager, for immediate use.

G Major assemblies that are procured with PEMA funds for initial issue only as exchange assemblies at DSU and GSU level. These assemblies will not be stocked above DS and GS level or returned to depot supply level.

NOTE

Cannibalization or salvage may be used as a source of supply for any items source coded above except those coded X1 and aircraft support items as restricted by AR 700-42.

(2) Maintenance code indicates the lowest level of Maintenance authorized to install the listed item. Repair Parts and Special Tools assigned maintenance code "C" may be stocked at the operator level of maintenance when authorized by the Unit Commander. The maintenance level codes are:

<i>Code</i>	<i>Explanation</i>
C	Operator/Crew maintenance
O	Organizational maintenance
F	Direct Support maintenance
H	General Support maintenance
D	Depot maintenance

(3) Recoverability code indicates whether unserviceable items should be returned for recovery or salvage. Items not coded are expendable. Recoverability codes are:

<i>Code</i>	<i>Explanation</i>
R	Applied to repair parts (assemblies and components), special tools and test equipment which are considered economically repairable at direct and general support maintenance levels. When the item is no longer economically repairable, it is normally disposed of at the GS level. When supply consideration dictate, some of the repair parts may be listed for automatic return to supply for depot level repair as set forth in AR 710-50. When so listed, they will be replaced by supply on an exchange basis.
S	Repair Parts, Special Tools, Test Equipment and assemblies which are economically repairable at DSU and GSU activities and which normally are furnished by supply on an exchange basis. When items are determined by a GSU to be uneconomically repairable, they will be evacuated to a depot for evaluation and analysis before final disposition.
T	Higher dollar value recoverable repair parts, special tools and test equipment which are

subject to special handling and are issued on an exchange basis. Such items will be evacuated to the depot for overhaul or final disposition. Communication-Electronics and missile support items will be repaired/overhauled only at depots.

U Repair Parts, Tools and Test Equipment specifically selected for salvage by reclamation units because of precious metal content, critical materials, high dollar value or reusable casings or castings.

b. Federal Stock Number. This column indicates the Federal stock number assigned to the item and will be used for requisitioning purposes.

c. Description. This column indicates the Federal item name and a minimum characteristic description required to describe the item. Assembly components and subassemblies are indented under major assemblies. The abbreviation "w/e" when used as a part of the nomenclature indicates the Federal stock number includes all armament, equipment, accessories, and repair parts issued with the item. A part number or other reference number is followed by the applicable five-digit Federal supply code for manufacturers in parenthesis. Repair part quantities included in kits and sets are shown in front of the repair part name. Material required for manufacture or fabrication is identified.

d. Unit of Measure (U/M). A two-character alphabetic abbreviation indicating the amount or quantity of the item, as used, upon which the allowances are based, e.g., ft, ea, pr, etc.

e. Quantity Incorporated in Unit. This column indicates the quantity of the item used in the assembly group. A "V" appearing in this column in lieu of a quantity indicates that a definite quantity cannot be indicated (e.g., shims, spacers, etc.).

f. 30-Day DS/GS Maintenance Allowance. Items authorized for use as required but not for initial stockage are identified with an asterisk in the allowance column.

g. Depot Maintenance Allowance Per 100 Equipments. Items authorized for use as required but not for initial stockage are identified with an asterisk in the allowance column.

h. Illustration. This column is divided as follows:

(1) *Figure number.* Indicates the figure number of the illustration on which the item is shown.

(2) *Item number.* Indicates the callout number used to reference the item in the illustration.

4. Special Information

a. Identifications of the useable on codes included in the description column of this publication are: (Applicable only when identifying parts to a particular serial number range or model.)

Code	Used on
A	Walter Kidde Mdl 895026
B	Bogue Electric Mdl 6703

b. Parts which require manufacture or assembly at a category higher than that authorized for installation will indicate in the source column the higher category.

c. The following publication pertains to the compressor and its components:

TM 5-4310-343-35 Direct and general support and depot maintenance manual

5. How to Locate Repair Parts

a. When Federal stock number, reference number or part number is unknown:

(1) Using the table of contents, determine the assembly group within which the repair part belongs. This is necessary since illustrations are prepared for assembly groups, and listings are divided into the same groups.

(2) Find the illustration covering the assembly group to which the repair part belongs.

(3) Identify the repair part on the illustration and note the illustration figure number and item number of the repair part.

(4) Using the Repair Parts Listing, find the assembly group to which the repair part belongs and locate the illustration figure and item number noted on the illustration.

b. When the Federal stock number, reference number, or part number is known:

(1) Using the Index of Federal Stock Numbers, Reference Numbers, and/or Part Numbers find the pertinent Federal stock number, reference number, and/or part number. This index is in ascending FSN sequence followed by a list of reference numbers or part numbers in ascending alpha-numeric sequence, cross-referenced to the illustration figure number and item number .

(2) Using the Repair Parts Listing, find the assembly group of the repair part and the illustration figure number and item number referenced in the Index of Federal Stock Numbers, Reference Numbers, or Part Numbers.

c. When the Federal stock number or reference number is known and the repair part is not illustrated:

(1) *First.* Using the Index of Federal Stock Numbers and Reference Numbers find the pertinent Federal stock number or reference number in the section titled "Items Not Illustrated" and note the group number. This section is in ascending FSN sequence followed by a list of reference numbers in alpha-numeric sequence cross-referenced to assembly group number.

(2) *Second.* Using the Table of Contents, locate the assembly group number and page number.

(3) *Third.* Using the applicable group number and page number, locate the pertinent stock number or reference number in the Repair Parts Listing.

6. Abbreviations

ea.....each
 in.....inch(es)
 mtgmounting(s)
 no.....number(s)
 thkthick(ness)

7. Recommendations for Maintenance

Publication Improvements

Report of errors, omissions, and recommendations for improving this publication by the individual user is encouraged. Reports should be submitted on DA Form 2028 (Recommended Changes to Publications), and forwarded direct to Commanding General, U.S. Army Mobility Equipment Command, ATTN: AMSME-MPP, 4300 Goodfellow Boulevard, St. Louis, Mo. 63120.

(1) SMR CODE	(2) FEDERAL STOCK NUMBER	(3) DESCRIPTION REF NUMBER & MFR CODE	(4) USABLE ON CODE	(6) QTY INC IN UNIT PACK	(5) QTY INC IN UNIT	(7) 30-DAY DS MAINT ALLOWANCE			(8) 30-DAY GS MAINT ALLOWANCE			(9) 1-YR ALW PER 100 EQUIP CNTGY	(10) DEPOT MAINT ALW PER 100 EQUIP	(11) ILLUS- TRATION	
						(a)	(b)	(c)	(a)	(b)	(c)			(a)	(b)
						1-20	21-50	51-100	1-20	21-50	51-100			FIG. NO.	ITEM NO.
		SECTION II - REPAIR PARTS FOR DS, GS AND DEPOT MAINTENANCE													
		GROUP 01 - COMPRESSOR ASSEMBLY													
P F	5310-088-0553	NUT, SELF-LOCKING HEXAGON: COMPRESSOR TO MOTOR MTG MS21044N5 (96906)	A	EA	2	*	*	*	*	*	*	*	*	1	1
P F	5310-880-7744	NUT, PLAIN, HEXAGON: COMPRESSOR TO MOTOR MTG MS51967-5 (96906)	B	EA	1	*	*	*	*	*	*	*	*	1	1
P F	5310-167-0820	WASHER, FLAT: COMPRESSOR TO MOTOR MFG AN960-516 (88044)	A	EA	2	*	*	*	*	*	*	*	*	1	2
P F	5310-407-9566	WASHER, LOCK: COMPRESSOR TO MOTOR MTG MS35338-45 (96906)	B	EA	1	*	*	*	*	*	*	*	*	1	2
P F		BOLT, MACHINE: COMPRESSOR TO MOTOR MTG 1264-2120 (33525)	A	EA	*	2	*	*	*	*	*	*	*	1	3
P F	5306-225-5908	SCREW, CAP, HEXAGON HEAD: COMPRESSOR TO MOTOR MTG MS90725-36 (96906)	B	EA	1	*	*	*	*	*	*	*	*	1	3
P F	5310-167-0836	WASHER, FLAT: COMPRESSOR TO MOTOR MFG AN960-516L (88044)	A	EA	*	3	*	*	*	*	*	*	*	1	4
P F	5310-088-0553	NUT, SELF-LOCKING HEXAGON: COMPRESSOR TO MOTOR MTG MS21044N5 (96906)	A	EA	2	*	*	*	*	*	*	*	*	1	5
P F	5310-880-7744	NUT, PLAIN, HEXAGON: COMPRESSOR TO MOTOR MTG MS51967-5 (96906)	B	EA	3	*	*	*	*	*	*	*	*	1	5
P F	5310-167-0820	WASHER, FLAT: COMPRESSOR TO MOTOR MFG AN960-516 (88044)	A	EA	*	2	*	*	*	*	*	*	*	1	6
P F	5310-407-9566	WASHER, LOCK: COMPRESSOR TO MOTOR MTG MS35338-45 (96906)	B	EA	3	*	*	*	*	*	*	*	*	1	6
P F		BOLT, MACHINE: COMPRESSOR 1264-2122 (33525)	A	EA	*	2	*	*	*	*	*	*	*	1	7
P F	5305-225-8499	SCREW, CAP, HEXAGON HEAD: COMPRESSOR TO MOTOR MTG MS90725-34 (96906)		EA	3	*	*	*	*	*	*	*	*	1	7
P F	5310-167-0836	WASHER, FLAT: COMPRESSOR TO MOTOR MFG AN960-516L (88044)	A	EA	*	2	*	*	*	*	*	*	*	1	8
P F T	4310-403-4667	COMPRESSOR ASSEMBLY: W/COOLERS 894833 (33525)		EA	1	*	*	*	*	*	*	*	*	1	9
P O	5305-653-2535	SCREW, MACHINE: COVER MTG 1904-1136 (33525)		EA	1	*	*	*	*	*	*	*	*	2	1
P O	5310-595-6772	WASHER, FLAT: COVER MTG MS15795-808 (96906)		EA	1	*	*	*	*	*	*	*	*	2	2
P O	4310-513-8259	COVER, FILTER 204066 (33525)		EA	1	*	*	*	*	*	*	*	*	2	3
P O	4730-605-0281	STRAINER, AIR INLET 204070 (33525)		EA	1	*	*	*	*	*	*	*	*	2	4
P O	5330-605-0280	GASKET, AIR INLET 204068 (33525)		EA	1	*	*	*	*	*	*	*	*	2	5

(1) SMR CODE	(2) FEDERAL STOCK NUMBER	(3) DESCRIPTION REF NUMBER & MFR CODE	(4) USABLE ON CODE	(6) UNIT OF ISSUE	(5) QTY INC IN UNIT	(7) 30-DAY DS MAINT ALLOWANCE			(8) 30-DAY GS MAINT ALLOWANCE			(9) 1-YR ALW PER 100 EQUIP CNTGY	(10) DEPOT MAINT ALW PER 100 EQUIP	(11) ILLUS- TRATION	
						(a) 1-20	(b) 21-50	(c) 51-100	(a) 1-20	(b) 21-50	(c) 51-100			(a) FIG. NO.	(b) ITEM NO.
P O	4310-605-0259	FILTER, AIR INLET 204033 (33525)	EA	*	1	*	*	*	*	*	*	*	*	2	6
P O	5330-605-0280	GASKET, AIR INLET 204068 (33525)	EA		1	*	*	*	*	*	*	*	*	2	7
P F	5305-942-8431	SCREW, MACHINE: FAN GUARDS ATTACHING MS35275-245 (96906)	EA		4	*	*	*	*	*	*	*	*	3	1
P F	5310-045-3299	WASHER, LOCK: FAN GUARDS ATTACHING MS35338-42 (96906)	EA		4	*	*	*	*	*	*	*	*	3	2
P F	5310-783-8778	WASHER, FLAT: FAN GUARDS ATTACHING MS9321-08 (96906)	EA		4	*	*	*	*	*	*	*	*	3	3
P F		GUARD, FRONT 292722 (33525)	EA		1	*	*	*	*	*	*	*	*	3	4
P F	5305-228-3927	SCREW, CAP, SOCKET HEAD: OIL PUMP AND REAR GUARD MTG 206898 (33525)	EA		4	*	*	*	*	*	*	*	*	3	5
P F	5310-141-1795	WASHER, FLAT: OIL PUMP AND REAR GUARD MTG AN960-416 (88044)	EA		4	*	*	*	*	*	*	*	*	3	6
P F		GUARD, REAR 292723 (33525)	EA		1	*	*	*	*	*	*	*	*	3	7
P F	5315-696-8488	LOCKNUT: FAN 206782 (33525)	EA		1	*	*	*	*	*	*	*	*	3	8
P F	5310-331-5257	NUT, BUSHING 241109 (33525)	EA		1	*	*	*	*	*	*	*	*	3	9
PF	1650-605-0252	COVER, SPRING 204388 (33525)	EA		1	*	*	*	*	*	*	*	*	3	10
P F	5360-328-3690	SPRING: FAN 204387 (33525)	EA		1	*	*	*	*	*	*	*	*	3	11
P F	5340-531-6992	SPRING LOCK, FAN 205039 (33525)	EA		1	*	*	*	*	*	*	*	*	3	12
P F		FAN ASSEMBLY 876048 (33525)	EA		1	*	*	*	*	*	*	*	*	3	13
P F	5310-680-5110	BUSHING, FAN 206780 (33525)	EA		1	*	*	*	*	*	*	*	*	3	14
PF	5310-637-2216	WASHER: FAN 204385 (33525)	EA		1	*	*	*	*	*	*	*	*	3	15
P F		TUBE, BLEED, OIL 894958 (33525)	EA		1	*	*	*	*	*	*	*	*	3	16
P F		PACKING, PREFORMED: OIL PUMP MOUNTING 5303-0500 (33525)	EA		1	*	*	*	*	*	*	*	*	3	17
P F		WASHER, WAVE: OIL PUMP MTG 255038 (33525)	EA		1	*	*	*	*	*	*	*	*	3	18
P O		TUBE, OIL SUPPLY 894957 (33525)	EA		1	*	*	*	*	*	*	*	*	3	19
X2F		SCREW, SUMP 5833-1012 (33525)	EA		4	*	*	*	*	*	*	*	*	3	20
P F	5310-045-3296	WASHER, LOCK: SUMP MTG MS35338-43 (96906)	EA		4	*	*	*	*	*	*	*	*	3	21
P F	5310-167-0834	WASHER, FLAT: SUMP MTG AN960-10L (88044)	EA		4	*	*	*	*	*	*	*	*	3	22
P O	1040-408-2354	STRAINER ASSEMBLY, OIL 876071 (33525)	EA		1	*	*	*	*	*	*	*	*	3	23

(1) SMR CODE	(2) FEDERAL STOCK NUMBER	(3) DESCRIPTION REF NUMBER & MFR CODE	(4) USABLE ON CODE	(5) UNIT OF MEAS	(6) QTY INC IN UNIT	(6) 30-DAY DS MAINT ALLOWANCE			(7) 30-DAY GS MAINT ALLOWANCE			(8) 1-YR ALW PER 100 EQUIP CNTGY	(9) DEPOT MAINT ALW PER 100 EQUIP	(10) ILLUS- TRATION	
						(a)	(b)	(c)	(a)	(b)	(c)			(a)	(b)
						1-20	21-50	51-100	1-20	21-50	51-100			FIG. NO.	ITEM NO.
P O	5330-576-9925	PACKING, PREFORMED: OIL STRAINER 5304-0600 (33525)		EA	1	*	*	*	*	*	*	*	*	3	24
P O	5365-287-0094	PLUG, DRAIN: AN814-4D (88044)		EA	1	*	*	*	*	*	*	*	*	3	25
P O	5330-805-2966	PACKING, PREFORMED: PLUG AN6290-4 (88044)		EA	1	*	*	*	*	*	*	*	*	3	26
P O		DIPSTICK, OIL LEVEL 277976 (33525)		EA	1	*	*	*	*	*	*	*	*	3	27
P O	5330-833-7491	PACKING, PREFORMED DIPSTICK AN6290-5 (88044)		EA	1	*	*	*	*	*	*	*	*	3	28
X2F		SUMP, OIL 292129 (33525)		EA	1									3	29
P F	1040-408-2362	PACKING, QUAD RING, SUMP 255067 (33525)		EA	1	*	*	*	*	*	*	*	*	3	30
P F	5310-941-6440	NUT, CLAMP MS21083D08 (96906)		EA	6	*	*	*	*	*	*	*	*	3	31
P F	5340-726-9317	CLAMP, CUSHIONED MS21919D9 (96906)		EA	8	*	*	*	*	*	*	*	*	3	32
P F	5305-400-5720	SCREW CLAMP 1563-0810 (33525)		EA	6	*	*	*	*	*	*	*	*	3	33
P F	5310-515-8058	WASHER, FLAT: CLAMP MTG AN960-8 (88044)		EA	6	*	*	*	*	*	*	*	*	3	34
X2F		BRACKET: INTERCOOLER, 1ST STAGE 213072 (33525)		EA	1									3	35
X2F		BRACKET: INTERCOOLER, 2ND STAGE 206871 (33525)		EA	2									3	35
X2F		BRACKET: INTERCOOLER, 3RD STAGE 206869 (33525)		EA	1									3	35
X2F		PLATE, OIL 279075 (33525)		EA	1									3	36
P F	4310-421-1477	INTERCOOLER: 3RD STAGE 873483 (33525)		EA	1	*	*	*	*	*	*	*	*	3	37
P F	4730-331-4950	ELBOW, PIPE: 3RD STAGE MS20822-4C (96906)		EA	1	*	*	*	*	*	*	*	*	3	38
P F	4310-435-2405	INTERCOOLER: 2ND STAGE 873482 (33525)		EA	1	*	*	*	*	*	*	*	*	3	39
P F	1650-699-0522	VALVE, RELIEF: 2ND STAGE 802259 (33525)		EA	1	*	*	*	*	*	*	*	*	3	40
P F	5310-941-640	NUT, CLAMP MS21083D08 (96906)		EA	1	*	*	*	*	*	*	*	*	3	41
P F	5340-726-9317	CLAMP, CUSHIONED MS21919D9 (96906)		EA	1	*	*	*	*	*	*	*	*	3	42
P F	5305-400-5720	SCREW, CLAMP 1563-0810 (33525)		EA	1	*	*	*	*	*	*	*	*	3	43
P F	5310-515-8058	WASHER, FLAT: CLAMP MTG AN960-8 (88044)		EA	1	*	*	*	*	*	*	*	*	3	44
X2F		BRACKET, AFTERCOOLER 207799 (33525)		EA	1									3	45
P F	4310-420-8772	AFTERCOOLER 894528 (33525)		EA	1	*	*	*	*	*	*	*	*	3	46
P F	1040-403-5649	ELBOW, LONG 17309 (33525)		EA	1	*	*	*	*	*	*	*	*	3	47

(1) SMR CODE	(2) FEDERAL STOCK NUMBER	(3) DESCRIPTION REF NUMBER & MFR CODE	(4) USABLE ON CODE	(5) UNIT OF MEAS	(6) 30-DAY DS MAINT ALLOWANCE	(7) 30-DAY GS MAINT ALLOWANCE			(8) 1-YR ALW PER 100 EQUIP CNTGY	(9) DEPOT MAINT ALW PER 100 EQUIP	(10) ILLUS- TRATION					
						QTY INC IN UNIT	(a) 1-20	(b) 21-50			(c) 51-100	(a) 1-20	(b) 21-50	(c) 51-100	(a) FIG. NO.	(b) ITEM NO.
P F	1650-960-7688	INTERCOOLER: 1ST STAGE 873481 (33525)		EA	1	*	*	*	*	*	*	3	48			
P F	4730-186-9961	ELBOW, PIPE MS20822-4D (96906)		EA	1	*	*	*	*	*	*	3	49			
P F	1040-403-569	ELBOW, LONG 17309 (33525)		EA	1	*	*	*	*	*	*	3	50			
P F	5330-805-2966	PACKING, PREFORMED AN6290-4 (88014)		EA	1	*	*	*	*	*	*	3	51			
P F	5330-932-5640	RETAINER, PACKING MS9484-04 (96906)		EA	1	*	*	*	*	*	*	3	52			
P F	4730-277-6371	LOCKNUT: TUBE AN6289D4 (88044)		EA	1	*	*	*	*	*	*	3	53			
P F	4730-677-6418	ELBOW, DISCHARGE 241240 (33525)		EA	1	*	*	*	*	*	*	3	54			
P F	4310-360-1645	PUMP ASSEMBLY, OIL 894911 (33525)		EA	1	*	*	*	*	*	*	4				
P D		SCREW, MACHINE: PLATE MTG AN50568510 (88044)		EA	4					*	*	4	1			
X1		GASKET, SCREW 206847 (33525) (PART OF KIT, P/N 804588 (33525))		EA	4							4	2			
P D		SCREW, MACHINE: PLATE MTG AN505C8R7 (88044)		EA	2					*	*	4	3			
X1		GASKET, SCREW 206847 (33525) (PART OF KIT, P/N 804588 (33525))		EA	2							4	1			
P D		SCREW, MACHINE: PLATE MTG AN505C8R8 (33525)		EA	2					*	*	4	5			
X1		GASKET, SCREW 206847 (33525) (PART OF KIT, P/N 804588 (33525))		EA	2							4	6			
X2D		PLUG, DOWEL 206846 (33525)		EA	1							4	7			
X2D	5310-263-5869	RING, RETAINER MS16624-37 (96906)		EA	1							4	8			
X2D		WASHER, THRUST 250865 (33525)		EA	1							4	9			
X2D		KEY, THRUST PLATE 206853 (33525)		EA	1							4	10			
X1		SEAL OIL: DRIVE SHAFT 206849 (33525) (PART OF KIT, P/N 804590 (33525))		EA	1							4	11			
P F		ELBOW, PIPE: PUMP INLET AN823-4 (88044)		EA	1	*	*	*	*	*	*	4	12			
P F	5305-253-5606	SCREW, DRIVE: NAMEPLATE MS21318-7 (96906)		EA	2	*	*	*	*	*	*	4	13			
X2F		NAMEPLATE: OIL PUMP 206848 (33525)		EA	1							4	14			
P F		ELBOW, PIPE: BY-PASS OUTLET AN823-5 (33525)		EA	1	*	*	*	*	*	*	4	15			
X2D		RETAINER, SPRING 255288 (33525)		EA	1							4	16			

(1) SMR CODE	(2) FEDERAL STOCK NUMBER	(3) DESCRIPTION REF NUMBER & MFR CODE	(4) USABLE ON CODE	(5) UNIT OF MEAS	(6) 30-DAY DS MAINT ALLOWANCE	(7) 30-DAY GS MAINT ALLOWANCE	(8) 1-YR ALW PER 100 EQUIP CNTGY	(9) DEPOT MAINT ALW PER 100 EQUIP	(10) ILLUS- TRATION			
									(a) (b)		(a) FIG. NO.	(b) ITEM NO.
									1-20	21-50		
X1		SPRING, HELICAL: PUMP BY-PASS 206845 (33525) (PART OF KIT, P/N 804588 (33525))		EA	1					4	17	
X2D		GUIDE, SPRING 206844 (33525)		EA	1					4	18	
X2D		BALL, BY-PASS 206852 (33525)		EA	1					4	19	
X1		BODY ASSEMBLY 875066 (33525)		EA	1					4	20	
X2D		KEY, PUMP SHAFT 250588 (33525)		EA	1					4	21	
X1		PIN, THRUST 250589 (33525) (PART OF KIT, P/N 804588 (33525))		EA	1					4	22	
X1		SHAFT DRIVE 292178 (33525)		EA	1					4	23	
X1		PACKING, PREFORMED: PUMP BODY 206851 (33525) (PART OF KIT, P/N 804590 (33525))		EA	1					4	24	
X1		PIN, ALIGNMENT 206841 (33525) (PART OF KIT, P/N 804588 (33525))		EA	1					4	25	
X1		PLATE, CENTER 270593 (33525)		EA	1					4	26	
X1		PACKING, PREFORMED: CENTER PLATE 206851 (33525) (PART OF KIT, P/N 804590 (33525))		EA	1					4	27	
X2D		GEAR, DRIVE 206837 (33525)		EA	1					4	28	
X2D		GEAR, SECONDARY 206838 (3355)		EA	1					4	29	
X1		RING, SEAL 5302-0300 (33525) (PART OF KIT, P/N 804590 (33525))		EA	1					4	30	
X1		PLATE, MOUNTING: BEARING 871612 (33525)		EA	1					4	31	
X1		COMPRESSOR, BASIC 894844 (33525)		EA	1							
P D	5310-807-1474	NUT, LOCK: 1ST STAGE MS21043L3 (96906)		EA	6			*	*	5	1	
P D	5310-468-4290	WASHER, FLAT: 1ST STAGE 5386-0001 (33525)		EA	6			*	*	5	2	
P D		STUD: 1ST STAGE 255200 (33525)		EA	6			*	*	5	3	
X2D		FIRST STAGE ASSEMBLY 894859 (33525)		EA	1					5	4	
P D	1040-408-2364	HEAD: 1ST STAGE 292190 (33525)		EA	1			*	*	5	5	
X1		STOP: 0.010 IN. THK 255148 (33525) (PART OF KIT, P/N 804587 (33525))		EA	V					5	6	

(1) SMR CODE	(2) FEDERAL STOCK NUMBER	(3) DESCRIPTION REF NUMBER & MFR CODE	(4) USABLE ON CODE	(5) UNIT OF MEAS	(6) QTY INC IN UNIT	(7) 30-DAY DS MAINT ALLOWANCE			(8) 30-DAY GS MAINT ALLOWANCE			(9) 1-YR ALW PER 100 EQUIP CNTGY	(10) DEPOT MAINT ALW PER 100 EQUIP	ILLUS- TRATION	
						(a)	(b)	(c)	(a)	(b)	(c)			(a)	(b)
						1-20	21-50	51-100	1-20	21-50	51-100			FIG. NO.	ITEM NO.
X1		STOP: 0.005 IN. THK 255147 (33525) (PART OF KIT, P/N 804587 (33525))		EA	V									5	7
X1		STOP: 0.003 IN. THK 255146 (33525) (PART OF KIT, P/N 804587 (33525))		EA	V									5	8
X1		STOP: 0.026 IN. THK 206540 (33525) (PART OF KIT, P/N 804587 (33525))		EA	1									5	9
X1		SPRING, OUTLET 209922 (33525) (PART OF KIT, P/N 804587 (33525))		EA	1									5	10
X1		VALVE, OUTLET 209921 (33525) (PART OF KIT, P/N 804587 (33525))		EA	1									5	11
X1		GASKET, HEAD 203646 (33525) (PART OF KIT, P/N 804589 (33525))		EA	1									5	12
P D		PLATE AND PIN ASSEMBLY 843895 (33525)		EA	1						*	*		5	13
X1		VALVE, INLET 203645 (33525) (PART OF KIT, P/N 804587 (33525))		EA	1									5	14
X1		GASKET, PLATE 203644 (33525) (PART OF KIT, P/N 804587 (33525))		EA	1									5	15
P D	1040-408-2366	CYLINDER 292177 (33525)		EA	1							*	*	5	16
P D	5305-468-4293	SCREW, CAP, SOCKET HEAD: 2ND STAGE MTG 5833-0832 (33525)		EA	6							*	*	6	1
P D	5310-045-3299	WASHER, LOCK: 2ND STAGE MTG MS35338-42 (96906)		EA	6							*	*	6	2
X2D		SECOND STAGE ASSEMBLY 894860 (33525)		EA	1									6	3
P D	5305-331-5256	SCREW, LOCK 206507 (33525)		EA	1							*	*	6	4
P D	1650-953-0842	STOP, VALVE 242842 (33525)		EA	1							*	*	6	5
X1		SPRING 209923 (33525) (PART OF KIT, P/N 804587 (33525))		EA	1									6	6
X1		SPACER: 0.003 IN. THK 254956 (33525) (PART OF KIT, P/N 804587 (33525))		EA	V									6	7
X1		SPACER: 0.005 IN. THK 254957 (33525) (PART OF KIT, P/N 804587 (33525))		EA	V									6	8
X1		SPACER: 0.010 IN. THK 254958 (33525) (PART OF KIT, P/N 804587 (33525))		EA	V									6	9

(1) SMR CODE	(2) FEDERAL STOCK NUMBER	(3) DESCRIPTION REF NUMBER & MFR CODE	(4) USABLE ON CODE	(5) UNIT OF MEAS	QTY	(6)			(7)			(8) 1-YR ALW PER 100 EQUIP CNTGY	(9) DEPOT MAINT ALW PER 100 EQUIP	(10)			
						INC	30-DAY DS MAINT ALLOWANCE			30-DAY GS MAINT ALLOWANCE				ILLUS- TRATION	(a) FIG. NO.	(b) ITEM NO.	
							IN UNIT	(a) 1-20	(b) 21-50	(c) 51-100	(a) 1-20						(b) 21-50
X1		VALVE, DISCHARGE 241898 (33525) (PART OF KIT, P/N 804587 (33525))		EA	1									6	10		
P D	1650-561-5437	HEAD, CYLINDER 270558 (33525)		EA	1						*	*		6	11		
X1		SEAL, PLATE 206508 (33525) (PART OF KIT, P/N 804589 (33525))		EA	1									6	12		
X1		GASKET, PLATE 206511 (33525) (PART OF KIT, P/N 804589 (33525))		EA	1									6	13		
P D	1650-546-3426	PLATE, VALVE 241055 (33525)		EA	1						*	*		6	14		
X1		GASKET, HEAD 206519 (33525) (PART OF KIT, P/N 804587 (33525))		EA	1									6	15		
X1		VALVE, INTAKE 206524 (33525) (PART OF KIT, P/N 804587 (33525))		EA	1									6	16		
X1		SPRING, VALVE 241054 (33525) (PART OF KIT, P/N 804587 (33525))		EA	1									6	17		
P D	1040-408-2363	CYLINDER: 2ND STAGE 292167 (33525)		EA	1						*	*		6	18		
P D	1650-826-7916	PLUNGER ASSEMBLY 873004 (33525)		EA	1						*	*		6	19		
P D	5305-468-4291	SCREW, CAP, SOCKET HEAD: 3RD STAGE MTG 5833-1132 (33525)		EA	4						*	*		7	1		
P D	5310-045-3296	WASHER, LOCK: 3RD STAGE MTG MS35338-43 (96906)		EA	4						*	*		7	2		
X2D		THIRD STAGE ASSEMBLY 894861 (33525)		EA	1									7	3		
P D	5305-331-5256	SCREW, LOCK 206507 (33525)		EA	1						*	*		7	4		
P D	1650-953-0842	STOP, VALVE 242842 (33525)		EA	1						*	*		7	5		
X1		SPACER: 0.003 IN. THK 254956 (33525) (PART OF KIT, P/N 804587 (33525))		EA	V									7	6		
X1		SPACER: 0.005 IN. THK 254957 (33525) (PART OF KIT, P/N 804587 (33525))		EA	V									7	7		
X1		SPACER: 0.010 IN. THK 254958 (33525) (PART OF KIT, P/N 804587 (33525))		EA	V									7	8		
P D	1650-546-3435	HEAD, CYLINDER 270563 (33525)		EA	1						*	*		7	9		
X1		SPRING 209923 (33525) (PART OF KIT, P/N 804587 (33525))		EA	1									7	10		

(1) SMR CODE	(2) FEDERAL STOCK NUMBER	(3) DESCRIPTION REF NUMBER & MFR CODE	(4) USABLE ON CODE	(5) UNIT OF MEAS	(6) QTY INC IN UNIT	(7) 30-DAY DS MAINT ALLOWANCE			(7) 30-DAY GS MAINT ALLOWANCE			(8) 1-YR ALW PER 100 EQUIP CNTGY	(9) DEPOT MAINT ALW PER 100 EQUIP	(10) ILLUS- TRATION	
						(a) 1-20	(b) 21-50	(c) 51-100	(a) 1-20	(b) 21-50	(c) 51-100			(a) FIG. NO.	(b) ITEM NO.
						X1		VALVE, DISCHARGE 241898 (33525) (PART OF KIT, P/N 804587 (33525))		EA	1				
X1		SEAL, PLATE 206508 (33525) (PART OF KIT, P/N 804589 (33525))		EA	1									7	12
X1		GASKET, PLATE 206511 (33525) (PART OF KIT, P/N 804589 (33525))		EA	1									7	13
P D	1650-547-0397	PLATE, VALVE 241056 (33525)		EA	1						*	*		7	14
X1		VALVE, INTAKE 211958 (33525) (PART OF KIT, P/N 804587 (33525))		EA	1									7	15
X1		SPRING, VALVE 254917 (33525) (PART OF KIT, P/N 804587 (33525))		EA	1									7	16
X1		GASKET, HEAD 206512 (33525) (PART OF KIT, P/N 804587 (33525))		EA	1									7	17
P D		CYLINDER AND PLUNGER ASSEMBLY 876099 (33525)		EA	1						*	*		7	18
P D		SCREW, CAP, SOCKET HEAD: 4TH STAGE MTG 5833-1124 (33525)		EA	4						*	*		8	1
P D	5310-045-3296	WASHER, LOCK: 4TH STAGE MTG MS35338-43 (96906)		EA	4						*	*		8	2
X2D		FOURTH STAGE ASSEMBLY 894862 (33525)		EA	1									8	3
P D	1650-337-5273	SCREW, LOCK 206528 (33525)		EA	1						*	*		8	4
X1		STOP, VALVE 210000 (33525) (PART OF KIT, P/N 804587 (33525))		EA	1									8	5
X1		SPACER: 0.003 IN. THK 254959 (33525) (PART OF KIT, P/N 804587 (33525))		EA	V									8	6
X1		SPACER: 0.005 IN. THK 254960 (33525) (PART OF KIT, P/N 804587 (33525))		EA	V									8	7
X1		SPACER: 0.010 IN. THK 254961 (33525) (PART OF KIT, P/N 804587 (33525))		EA	V									8	8
X1		SPRING 209925 (33525) (PART OF KIT, P/N 804587 (33525))		EA	1									8	9
P D	1650-546-3434	HEAD, CYLINDER 270562 (33525)		EA	1						*	*		8	10

(1) SMR CODE	(2) FEDERAL STOCK NUMBER	(3) DESCRIPTION REF NUMBER & MFR CODE	(4) USABLE ON CODE	(5) UNIT OF MEAS	(6) QTY INC IN UNIT	(7) 30-DAY DS MAINT ALLOWANCE			(8) 30-DAY GS MAINT ALLOWANCE			(9) 1-YR ALW PER 100 EQUIP CNTGY	(10) DEPOT MAINT ALW PER 100 EQUIP	ILLUS- TRATION	
						(a)	(b)	(c)	(a)	(b)	(c)			(a)	(b)
						1-20	21-50	51-100	1-20	21-50	51-100			FIG. NO.	ITEM NO.
X1		VALVE, DISCHARGE 203673 (33525) (PART OF KIT, P/N 804587 (33525))		EA	1									8	11
X1		SEAL, PLATE 206534 (33525) (PART OF KIT, P/N 804589 (33525))		EA	1									8	12
X1		GASKET, PLATE 206530 (33525) (PART OF KIT, P/N 804589 (33525))		EA	1									8	13
P D	1650-546-3427	PLATE, VALVE 241059 (33525)		EA	1						*	*		8	14
X1		VALVE, INTAKE 211959 (33525) (PART OF KIT, P/N 804587 (33525))		EA	1									8	15
X1		SPRING, INLET 254914 (33525) (PART OF KIT, P/N 804587 (33525))		EA	1									8	16
X1		GASKET, HEAD 206535 (33525)		EA	1									8	17
P D		CYLINDER AND PLUNGER ASSEMBLY 843939 (33525)		EA	1						*	*		8	18
P F	4310-620-7095	RING, BEVEL 206549 (33525)		EA	1	*	*	*	*	*	*	*	*	9	1
P F	1650-546-3429	RETAINER, SEAL 241064 (33525) (PART OF KIT, P/N 804587 (33525))		EA	1	*	*	*	*	*	*	*	*	9	2
P F	5330-531-3745	SEAL, OIL, REAR 205872 (33525) (PART OF KIT, P/N 804589 (33525))		EA	1	*	*	*	*	*	*	*	*	9	3
P F	5330-803-5955	PACKING, PREFORMED: REAR MS29561-137 (96906) (PART OF KIT, P/N 804589 (33525))		EA	1	*	*	*	*	*	*	*	*	9	4
X2D		PLUG, ORIFICE, CRANKSHAFT 207191 (33525)		EA	1									9	5
X1		SHIM: 0.003 IN. THK 255047 (33525) (PART OF KIT, P/N 804587 (33525))		EA	V									9	6
X1		SHIM: 0.005 IN. THK 255048 (33525) (PART OF KIT, P/N 804587 (33525))		EA	V									9	6
X1		SHIM: 0.010 IN. THK 255049 (33525) (PART OF KIT, P/N 804587 (33525))		EA	V									9	6
X1		PACKING, PREFORMED: 4TH STAGE MS29561-112 (96906) (PART OF KIT, P/N 801589 (33525))		EA	1									9	7
X1		SHIM: 0.003 IN. THK 255062 (33525) (PART OF KIT, P/N 804587 (33525))		EA	V									9	8

(1) SMR CODE	(2) FEDERAL STOCK NUMBER	(3) DESCRIPTION REF NUMBER & MFR CODE	(4) USABLE ON CODE	(5) UNIT OF MEAS	(6) QTY INC IN UNIT	(7) 30-DAY DS MAINT ALLOWANCE			(7) 30-DAY GS MAINT ALLOWANCE			(8) 1-YR ALW PER 100 EQUIP CNTGY	(9) DEPOT MAINT ALW PER 100 EQUIP	(10) ILLUS- TRATION	
						(a) 1-20	(b) 21-50	(c) 51-100	(a) 1-20	(b) 21-50	(c) 51-100			(a) FIG. NO.	(b) ITEM NO.
						X1		SHIM: 0.005 IN. THK 255063 (33525) (PART OF KIT, P/N 804587 (33525))		EA	V				
X1		SHIM: 0.010 IN. THK 255064 (33525) (PART OF KIT, P/N 804587 (33525))		EA	V									9	8
X1		PACKING, PREFORMED: 3RD STAGE MS29561-117 (96906) (PART OF KIT, P/N 804589 (33525))		EA	1									9	9
X1		SHIM: 0.003 IN. THK 255059 (33525) (PART OF KIT, P/N 804587 (33525))		EA	V									9	10
X1		SHIM: 0.005 IN. THK 255060 (33525) (PART OF KIT, P/N 804587 (33525))		EA	V									9	10
X1		SHIM: 0.010 IN. THK 255061 (33525) (PART OF KIT, P/N 804587 (33525))		EA	V									9	10
X1		PACKING, PREFORMED: 2ND STAGE MS29561-124 (96906) (PART OF KIT, P/N 804589 (33525))		EA	1									9	11
X1		RING, PISTON 241057 (33525) (PART OF KIT, P/N 804587 (33525))		EA	4									9	12
P D		RING, RETAINING: PISTON PIN 254995 (33525)		EA	1						*	*		9	13
X1		SHIM, PISTON PIN: 1ST STAGE 25499 (33525) (PART OF KIT, P/N 804587 (33525))		EA	V									9	14
P D		RING, RETAINING: PISTON PIN 254995 (33525)		EA	1						*	*		9	15
P D	1040-408-2373	PIN, PISTON: 1ST STAGE 277941 (33525)		EA	1						*	*		9	16
P D		PISTON: 1ST STAGE 292149 (33525)		EA	1						*	*		9	17
X1		SHIM: 0.003 IN. THK 255078 (33525) (PART OF KIT, P/N 804587 (33525))		EA	V									9	18
X1		SHIM: 0.005 IN. THK 255079 (33525) (PART OF KIT, P/N 804587 (33525))		EA	V									9	18
X1		SHIM: 0.010 IN. THK 255080 (33525) (PART OF KIT, P/N 804587 (33525))		EA	V									9	18
X1		PACKING PREFORMED: 1ST STAGE MS29561-232 (96906) (PART OF KIT, P/N 804589 (33525))		EA	1									9	19
X1		SCREW, COUNTERWEIGHT 206523 (33525) (PART OF KIT, P/N 804587 (33525))		EA	4									9	20

(1) SMR CODE	(2) FEDERAL STOCK NUMBER	(3) DESCRIPTION REF NUMBER & MFR CODE	(4) USABLE ON CODE	(5) UNIT OF MEAS	(6) QTY INC IN UNIT	(7) 30-DAY DS MAINT ALLOWANCE			(8) 30-DAY GS MAINT ALLOWANCE			(9) 1-YR ALW PER 100 EQUIP CNTGY	(10) DEPOT MAINT ALW PER 100 EQUIP	(11) ILLUS- TRATION	
						(a)	(b)	(c)	(a)	(b)	(c)			(a)	(b)
						1-20	21-50	51-100	1-20	21-50	51-100			FIG. NO.	ITEM NO.
P D	1650-073-5936	LOCK, COUNTERWEIGHT 242091 (33525)		EA	4						*	*	9	21	
P D	5310-045-3296	WASHER, LOCK: COUNTERWEIGHT MS35338-43 (96906)		EA	4						*	*	9	22	
P D	1650-546-3430	COUNTERWEIGHT 241068 (33525)		EA	2						*	*	9	23	
P D	1650-706-1863	KEYSTONE ASSEMBLY 872371 (33525)		EA	1						*	*	9	24	
X1		BEARING, BALL 9105K (21335) (PART OF KIT, P/N 804587 (33525))		EA	1								9	25	
P F	5330-580-6316	PACKING, PREFORMED: FRONT 203692 (33525) (PART OF KIT, P/N 804589 (33525))		EA	1	*	*	*	*	*	*	*	9	26	
X1		BEARING, BALL 9105K (21335) (PART OF KIT, P/N 804587 (33525))		EA	1								9	27	
P D		CRANKSHAFT ASSEMBLY 894913 (33525)		EA	1						*	*	9	28	
X2D		CRANKCASE ASSEMBLY 89863 (33525)		EA	1								9	29	
		GROUP 02 - MOISTURE SEPARATOR													
P F	5330-805-2966	PACKING, PREFORMED: ELBOW AN690-4 (88044)	A	EA	1	*	*	*	*	*	*	*	10	1	
P F	5330-932-5640	RETAINER, PACKING: ELBOW MS9484-04 (96906)	A	EA	1	*	*	*	*	*	*	*	10	2	
P F	4730-277-6371	LOCKNUT, TUBE: ELBOW AN628904 (88044)	A	EA	1	*	*	*	*	*	*	*	10	3	
P F	4730-402-1404	ELBOW, BULKHEAD FITTING: MOISTURE SEPARATOR AN833-4D (88044)	A	EA	1	*	*	*	*	*	*	*	10	4	
P F	4730-875-8264	NIPPLE AN815-4J (88044)	A	EA	1	*	*	*	*	*	*	*	10	5	
P F	5330-805-2966	PACKING, PREFORMED	A	EA	1	*	*	*	*	*	*	*	10	6	
P F		NUT, LOCK: CLAP MTG 5847-0800 (33525)	A	EA	2	*	*	*	*	*	*	*	10	7	
P F	5310-515-8058	WASHER, FLAT: CLAMP MTG AN960-8 (88044)	A	EA	2	*	*	*	*	*	*	*	10	8	
P F		SCREW, MACHINE: CLAMP MTG 5129-0808 (33525)	A	EA	2	*	*	*	*	*	*	*	10	9	
P F	5310-515-805	WASHER, FLAT: CLAMP MTG AN960-8 (88044)	A	EA	2	*	*	*	*	*	*	*	10	10	
P F	5340-912-7324	CLAMP, TUBE 248417 (33525)	A	EA	2	*	*	*	*	*	*	*	10	11	
X2F		BRACKET, CLAMP 253656 (33525)	A	EA	1								10	12	
P F		TUBE, PRESSURE SWITCH 894529 (33525)	A	EA	1	*	*	*	*	*	*	*	10	13	
P F	5310-153-6187	NUT, PLAIN, HEXAGON AN6289J4 (88044)	A	EA	1	*	*	*	*	*	*	*	10	14	

(1) SMR CODE	(2) FEDERAL STOCK NUMBER	(3) DESCRIPTION REF NUMBER & MFR CODE	USABLE ON CODE	(4) UNIT OF MEAS	(5) QTY INC IN UNIT	(6) 30-DAY DS MAINT ALLOWANCE			(7) 30-DAY GS MAINT ALLOWANCE			(8) 1-YR ALW PER 100 EQUIP CNTGY	(9) DEPOT MAINT ALW PER 100 EQUIP	(10) ILLUS- TRATION	
						(a)	(b)	(c)	(a)	(b)	(c)			(a)	(b)
						1-20	21-50	51-100	1-20	21-50	51-100			FIG. NO.	ITEM NO.
P F	5330-932-5640	RETAINER, PACKING MS9484-04 (96906)	A	EA	1	*	*	*	*	*	*	*	*	10	15
P F	5330-805-2966	PACKING, PREFORMED AN6290-4 (88044)	A	EA	1	*	*	*	*	*	*	*	*	10	16
P F	4730-875-8264	NIPPLE AN815-4J (88044)	A	EA	1	*	*	*	*	*	*	*	*	10	17
P F	5330-805-2966	PACKING, PREFORMED AN6290-4 (88044)	A	EA	1	*	*	*	*	*	*	*	*	10	18
P F	4310-420-8771	VALVE, BACK PRESSURE 875498-1700 (33525)	A	EA	1	*	*	*	*	*	*	*	*	10	19
P F	4730-278-9112	CLAMP, MOISTURE SEPARATOR 204143 (33525)	A	EA	2	*	*	*	*	*	*	*	*	10	20
P F		NUT, SELF-LOCKING: BRACKET TO BRACKET 5847-1700 (33525)	A	EA	4	*	*	*	*	*	*	*	*	10	21
P F	5310-141-1795	WASHER, FLAT: BRACKET TO BRACKET AN960-416 (88044)	A	EA	4	*	*	*	*	*	*	*	*	10	22
P F		BOLT, MACHINE: BRACKET TO BRACKET 1264-1710 (33525)	A	EA	4	*	*	*	*	*	*	*	*	10	23
P F	5310-141-1795	WASHER, FLAT: BRACKET TO BRACKET AN960-416 (88044)	A	EA	4	*	*	*	*	*	*	*	*	10	24
X2F		BRACKET, MOISTURE SEPARATOR 241014 (33525)	A	EA	1									10	25
P F		BOLT, MACHINE: BRACKET MTG 1264-1708 (33525)	A	EA	2	*	*	*	*	*	*	*	*	10	26
P F	5310-582-5965	WASHER, LOCK: BRACKET MTG MS35338-44 (96906)	A	EA	2	*	*	*	*	*	*	*	*	10	27
P F	5310-141-1795	WASHER, FLAT: BRACKET MTG AN960-416 (88044)	A	EA	2	*	*	*	*	*	*	*	*	10	28
P F	5305-543-2752	SCREW, MACHINE: BRACKET MTG MS35265-45 (96906)	A	EA	2	*	*	*	*	*	*	*	*	10	29
P F	5310-515-8058	WASHER FLAT: BRACKET MTG ANA960-8 (88044)	A	EA	2	*	*	*	*	*	*	*	*	10	30
X2F		BRACKET ASSEMBLY, MOISTURE SEPARATOR 875766 (33525)	A	EA	1									10	31
P F	5995-409-4150	CABLE ASSEMBLY, MOISTURE SEPARATOR 875711 (33525)	A	EA	1	*	*	*	*	*	*	*	*	10	32
P F	5330-805-2966	PACKING, PREFORMED MS21778-4 (96906)	B	EA	1	*	*	*	*	*	*	*	*	11	1
P F	4730-684-7310	LOCKNUT: ELBOW AN924-4C (88044)	B	EA	1	*	*	*	*	*	*	*	*	11	2
P F	4730-279-0119	ELBOW, BULKHEAD AN833-4C (88044)	B	EA	1	*	*	*	*	*	*	*	*	11	3
P F	5330-805-2966	PACKING, PREFORMED MS28778-4 (96906)	B	EA	1	*	*	*	*	*	*	*	*	11	4
P F	4730-928-3483	UNION, FLARE TUBE AN815-4K (88044)	B	EA	1	*	*	*	*	*	*	*	*	11	5
P F		TUBE ASSEMBLY: BACK PRESSURE VALVE TO SEPARATOR B36925 (07860)	B	EA	1	*	*	*	*	*	*	*	*	11	6

(1) SMR CODE	(2) FEDERAL STOCK NUMBER	(3) DESCRIPTION REF NUMBER & MFR CODE	USABLE ON CODE	(4) UNIT OF MEAS	(5) QTY INC IN UNIT	(6) 30-DAY DS MAINT ALLOWANCE			(7) 30-DAY GS MAINT ALLOWANCE			(8) 1-YR ALW PER 100 EQUIP CNTGY	(9) DEPOT MAINT ALW PER 100 EQUIP	(10) ILLUS- TRATION	
						(a)	(b)	(c)	(a)	(b)	(c)			(a)	(b)
						1-20	21-50	51-100	1-20	21-50	51-100			FIG. NO.	ITEM NO.
X1		PACKING, PREFORMED MS28778-4 (96906)	B	EA	1									11	7
X1		UNION, FLARE TUBE AN815-4K (88044)	B	EA	1									11	8
P F		TUBE ASSEMBLY: BACK PRESSURE VALVE TO PRESSURE SWITCH C26017 (07860)	B	EA	1	*	*	*	*	*	*	*	*	11	9
X1		PACKING, PREFORMED MS28778-4 (96906)	B	EA	1									11	10
X1		LOCKNUT AN924-4C (88044)	B	EA	1									11	11
X1		ELBOW, BULKHEAD AN833-4C (88044)	B	EA	1									11	12
X1		PACKING, PREFORMED MS28778-4 (96906)	B	EA	1									11	13
X1		LOCKNUT AN924-4C (88044)	B	EA	1									11	14
X1		UNION, BULKHEAD AN832-4C (8804)	B	EA	1									11	15
P F	5305-995-3442	SCREW, MACHINE: VALVE MTG MS35207-268 (96906)	B	EA	1	*	*	*	*	*	*	*	*	11	16
P F	5305-995-3441	SCREW, MACHINE: VALVE MTG MS35207-269 (96906)	B	EA	1	*	*	*	*	*	*	*	*	11	16
P F	5310-045-3296	WASHER, LOCKS VALVE MTG MS35338-43 (96906)	B	EA	2	*	*	*	*	*	*	*	*	11	17
P F	5310-809-8546	WASHER, FLAT: VALVE MTG MS27183-8 (96906)	B	EA	2	*	*	*	*	*	*	*	*	11	18
X2F		CLAMP, CABLE HP8N (09922)	B	EA	1									11	19
P F		VALVE, BACK PRESSURE 876101-1700 (33525)	B	EA	1	*	*	*	*	*	*	*	*	11	20
P F	5305-990-6444	SCREW, MACHINE: BRACKET MTG MS535207-261 (96906)	B	EA	2	*	*	*	*	*	*	*	*	11	21
P F	5310-045-3296	WASHER, LOCK: BRACKET MTG MS35338-43 (96906)	B	EA	2	*	*	*	*	*	*	*	*	11	22
X2F		BRACKET, BACK PRESSURE VALVE A49882 (07860)	B	EA	1									11	23
X2F		CLAMP, MOISTURE SEPARATOR A49881 (07860)	B	EA	2									11	24
P F	5310-761-6882	NUT, PLAIN, HEXAGON: BRACKET TO BRACKET MS51967-2 (96906)	B	EA	2	*	*	*	*	*	*	*	*	11	25
P F	5310-582-5965	WASHER, LOCK: BRACKET TO BRACKET MS35338-44 (96906)	B	EA	2	*	*	*	*	*	*	*	*	11	26
P F	5305-068-0500	SCREW, CAP, HEXAGON HEAD: BRACKET TO BRACKET MS90725-3 (96906)	B	EA	2	*	*	*	*	*	*	*	*	11	27
P F	5310-582-5965	WASHER, LOCK: BRACKET TO BRACKET MS35338-44 (96906)	B	EA	2	*	*	*	*	*	*	*	*	11	28
X2F		BRACKET, MOISTURE SEPARATOR 241014 (33525)	B	EA	1									11	29
P F	5305-068-0501	SCREW, CAP, HEXAGON HEAD: BOTTOM BRACKET MTG MS90725-5 (96906)	B	EA	2	*	*	*	*	*	*	*	*	11	30

(1) SMR CODE	(2) FEDERAL STOCK NUMBER	(3) DESCRIPTION REF NUMBER & MFR CODE	USABLE ON CODE	(4) UNIT OF MEAS	(5) QTY INC IN UNIT	(6) 30-DAY DS MAINT ALLOWANCE			(7) 30-DAY GS MAINT ALLOWANCE			(8) 1-YR ALW PER 100 EQUIP CNTGY	(9) DEPOT MAINT ALW PER 100 EQUIP	(10) ILLUS- TRATION	
						(a)	(b)	(c)	(a)	(b)	(c)			(a)	(b)
						1-20	21-50	51-100	1-20	21-50	51-100			FIG. NO.	ITEM NO.
P F	5310-582-5965	WASHER, LOCK: BOTTOM BRACKET MTG MS35338-44 (96906)	B	EA	2	*	*	*	*	*	*	*	*	11	31
X2F		BRACKET, MOISTURE SEPARATOR: BOTTOM B37244 (07860)	B	EA	1									11	32
P F	5305-990-6444	SCREW, MACHINE: BRACKET MTG MS35207-261 (96906)	B	EA	2	*	*	*	*	*	*	*	*	11	33
P F	5310-045-3296	WASHER, LOCK: BRACKET MTG MS35338-43 (96906)	B	EA	2	*	*	*	*	*	*	*	*	11	34
X2F		BRACKET, MOISTURE SEPARATOR TOP B37243 (07860)	B	EA	1									11	35
P F	5935-893-7373	CONNECTOR, ELECTRICAL MS3116P8-3S (96906)	B	EA	1	*	*	*	*	*	*	*	*	11	36
P F		SEPARATOR, MOISTURE 894518-0013 (33525) (COMPONENTS SAME AS SEPARATOR ASSEMBLY, P/N 894518-1700 (33525))	B	EA	1	*	*	*	*	*	*	*	*	12	
P F		SEPARATOR ASSEMBLY 894518-1700 (33525)	A	EA	1	*	*	*	*	*	*	*	*	12	
X1		SCREW, MACHINE: CONNECTOR MTG AN500AD3-4 (88044) (PART OF KIT, FSN 4310-107-1071)		EA	4									12	1
X1		WASHER, FLAT: CONNECTOR MTG AN960-3 (88044) (PART OF KIT, FSN 4310-107-1071)		EA	4									12	2
P H	5935-964-5470	CONNECTOR, RECEPTACLE MS3112E8-3P (96906)		EA	1				*	*	*	*	*	12	3
X1		SCREW, MACHINE: THERMOSTAT MTG AN500AD3-4 (88044) (PART OF KIT, FSN 4310-107-1071)		EA	2									12	4
X1		WASHER, FLAT: THERMOSTAT MTG AN960-3 (88044) (PART OF KIT, FSN 4310-107-1071)		EA	2									12	5
P H	5930-501-1590	THERMOSTAT 206340 (33525)		EA	1				*	*	*	*	*	12	6
X1		SCREW, MACHINE: BLOCK MTG AN500AD6-17 (88044) (PART OF KIT, FSN 4310-107-1071)		EA	2									12	7
X1		WASHER, FLAT: BLOCK MTG AN960-6 (88044) (PART OF KIT, FSN 4310-107-1071)		EA	2									12	8
X2H		BLOCK, MOUNTING 276381 (33525)		EA	1									12	9
P F	4730-186-9961	ELBOW, PIPE MS20822-4D (96906)		EA	1	*	*	*	*	*	*	*	*	12	10
X1		CYLINDER 240619 (33525)		EA	1									12	11
X1		SEAT ASSEMBLY 801400 (33525)		EA	1									12	12
X1		PACKING, PREFORMED MS29561-212 (96906) (PART OF KIT, FSN 4310-107-1071)		EA	1									12	13

(1) SMR CODE	(2) FEDERAL STOCK NUMBER	(3) DESCRIPTION USABLE ON CODE REF NUMBER & MFR CODE	(4) UNIT OF MEAS	(5) QTY INC IN UNIT	(6) 30-DAY DS MAINT ALLOWANCE			(7) 30-DAY GS MAINT ALLOWANCE			(8) 1-YR ALW PER 100 EQUIP CNTGY	(9) DEPOT MAINT ALW PER 100 EQUIP	(10) ILLUS- TRATION	
					(a)	(b)	(c)	(a)	(b)	(c)			(a)	(b)
					1-20	21-50	51-100	1-20	21-50	51-100			FIG. NO.	ITEM NO.
X1		SPRING 204190 (33525) (PART OF KIT, FSN 4310-107-1071)	EA	1									12	14
P F		SCREW, DRIVE: NAMEPLATE 1122-0202 (33525)	EA	2	*	*	*	*	*	*	*	*	12	15
X2F		NAMEPLATE 208551 (33525)	EA	1									12	16
P H	4310-107-1068	HEATER 244452 (33525)	EA	1				*	*	*	*	*	12	17
M F		TAPE, CAP 850 (0633) MANUFACTURE FROM:	EA	1									12	18
P F	4310-939-6838	TAPE, 4 IN. REQUIRED	RL		*	*	*	*	*	*	*	*		
X2H	4440-783-4326	PLUG, SAFETY 241893 (33525)	EA	1									12	19
X1		RING, SAFETY DISC 241922 (33525) (PART OF KIT, FSN 4310-107-1071)	EA	1									12	20
X1		DISC, SAFETY 209756 (33525) (PART OF KIT, FSN 4310-107-1071)	EA	1									12	21
X1		RETAINER SAFETY DISC 4304 (33525) (PART OF KIT, FSN 4310-107-1071)	EA	1									12	22
X2H	4730-203-0711	PLUS 206650 (33525)	EA	1									12	23
X1		PACKING, PREFORMED 5304-0400 (33525) (PART OF KIT, FSN 4310-107-1071)	EA	1									12	24

(1) SMR CODE	(2) FEDERAL STOCK NUMBER	(3) DESCRIPTION REF NUMBER & MFR CODE	(4) USABLE ON CODE	(5) UNIT OF MEAS	(6) QTY INC IN UNIT	(7) 30-DAY DS MAINT ALLOWANCE			(8) 30-DAY GS MAINT ALLOWANCE			(9) 1-YR ALW PER 100 EQUIP CNTGY	(10) DEPOT MAINT ALW PER 100 EQUIP	(11) ILLUS- TRATION	
						(a)	(b)	(c)	(a)	(b)	(c)			(a)	(b)
						1-20	21-50	51-100	1-20	21-50	51-100			FIG. NO.	ITEM NO.
X1		SCREW, MACHINE 1563-0606 (33525) (PART OF KIT, FSN 4310-107-1071)		EA	2									12	25
X1		BAFFLE 243472 (33525)		EA	1									12	26
X1		SHELL 841665 (33525)		EA	1									12	27
X1		SEAT 276482 (33525) (PART OF KIT, FSN 4310-107-107)		EA	1									12	28
X1		PACKING PREFORMED 5304-0400 (33525) (PART OF KIT, FSN 4310-107-1071)		EA	1									12	29
X1		PACKING PREFORMED MS29561-228 (96906) (PART OF KIT, FSN 4310-107-1071)		EA	1									12	30
X1		RING, BACK-UP 213241 (33525) (PART OF KIT, FSN 4310-107-1071)		EA	1									12	31
X1		LOCKNUT 241929 (33525) (PART OF KIT, FSN 4310-107-1071)		EA	1									12	32
X2H		TUBE INLET 251507 (33525)		EA	1									12	33
X1		BODY 291876 (33525)		EA	1									12	34
		GROUP 03 - PRESSURE SWITCH													
P F		NUT, LOCK: CLAMP MTG 5847-0800 (33525)	A	EA	2	*	*	*	*	*	*	*	*	13	1
P F	5310-515-8058	WASHER FLAT: CLAMP MTG AN960-8 (88044)	A	EA	2	*	*	*	*	*	*	*	*	13	2
P F		SCREW, MACHINE: CLAMP MTG 5129-0808 (33525)	A	EA	2	*	*	*	*	*	*	*	*	13	3
P F	5310-515-8058	WASHER, FLAT: CLAMP MTG AN960-8 (88044)	A	EA	2	*	*	*	*	*	*	*	*	13	4
P F	5340-912-7324	CLAMP, TUBE 248517 (33525)	A	EA	2	*	*	*	*	*	*	*	*	13	5
P F		BOLT, PLATE 1264-1736 (33525)	A	EA	2	*	*	*	*	*	*	*	*	13	6
P F		SCREW, CAP, HEXAGON HEAD: SWITCH MTG MS35291-14 (96906)	B	EA	2	*	*	*	*	*	*	*	*	13	6
P F	5310-582-5965	WASHER, LOCK: SWITCH MTG MS35338-44 (96906)		EA	2	*	*	*	*	*	*	*	*	13	7
P F	5310-141-1795	WASHER, FLAT: SWITCH MTG AN960-416 (88044)		EA	2	*	*	*	*	*	*	*	*	13	8
X2F		PLATE, CLAMP 253721 (33525)	A	EA	2									13	9
P F	5330-805-2966	PACKING, PREFORMED: ELBOW AN6290-4 (88044)	A	EA	1	*	*	*	*	*	*	*	*	13	10
P F	5330-932-5640	RETAINER, PACKING MS9484-04 (96906)	A	EA	1	*	*	*	*	*	*	*	*	13	11

(1) SMR CODE	(2) FEDERAL STOCK NUMBER	(3) DESCRIPTION REF NUMBER & MFR CODE	USABLE ON CODE	(4) UNIT OF MEAS	(5) QTY INC IN UNIT	(6) 30-DAY DS MAINT ALLOWANCE			(7) 30-DAY GS MAINT ALLOWANCE			(8) 1-YR ALW PER 100 EQUIP CNTGY	(9) DEPOT MAINT ALW PER 100 EQUIP	(10) ILLUS- TRATION	
						(a)	(b)	(c)	(a)	(b)	(c)			(a)	(b)
						1-20	21-50	51-100	1-20	21-50	51-100			FIG. NO.	ITEM NO.
P F	5310-453-6187	NUT, PLAIN, HEXAGON AN6289J4 (88044)	A	EA	1	*	*	*	*	*	*	*	*	13	12
P F	4730-875-8263	ELBOW, BULKHEAD AN833-4J (88044)	A	EA	1	*	*	*	*	*	*	*	*	13	13
P F	5330-805-2966	PACKING, PREFORMED AN6290-4 (88044)		EA	1	*	*	*	*	*	*	*	*	13	14
P F	5340-420-5783	PLUG, PRESSURE SWITCH AN814-4J (880 44)	A	EA	1	*	*	*	*	*	*	*	*	13	15
X2F		PLUG, PRESSURE SWITCH AN806-4K (88044)		B	EA									13	15
P F	5330-805-2966	PACKING, PREFORMED AN6290-4 (88044)		EA	1	*	*	*	*	*	*	*	*	13	16
P F	4730-875-8264	NIPPLE, TUBE AN815-4J (88044)		EA	1	*	*	*	*	*	*	*	*	13	17
P F R	5930-042-5197	SWITCH, PRESSURE 894544 (33525)		EA	1	*	*	*	*	*	*	*	*	13	18
P H		SCREW, COVER AN500AD3-20 (88044)		EA	3				*	*	*	*	*	14	1
P H		WASHER, SEALING: COVER 214394 (33525)		EA	3				*	*	*	*	*	14	2
X2F		NAMEPLATE 253722 (33525)		EA	1									14	3
X2H		TERMINAL, LUG MS25036-4 (96906)		EA	1									14	4
X2H		COVER 247049 (33525)		EA	1									14	5
P H		GASKET, COVER 247048 (33525)		EA	1				*	*	*	*	*	14	6
X2H		LOCKNUT RMLHTM2860-62W (13257)		EA	1									14	7
X2H		WASHER 214757 (33525)		EA	1									14	8
X2H		COMPENSATOR 248098 (33525)		EA	1									14	9
X2H		HAT 248097 (33525)		EA	1									14	10
P H	1650-922-9581	SPRING 214751 (33525)		EA	1				*	*	*	*	*	14	11
X2H		CAP 247053 (33525)		EA	1									14	12
P H	1650-922-9582	SPRING: 214732 (33525)		EA	1				*	*	*	*	*	14	13
X2H		RETAINER 247095 (33525)		EA	1									14	14
X2H		PUSHER 247051 (33525)		EA	1									14	15
P H	3110-183-9175	BALL 31515 (33525)		EA	1				*	*	*	*	*	14	16
P H	1650-922-9591	PISTON 247163 (33525)		EA	1				*	*	*	*	*	14	17
X2H		RING, BACK-UP 248099 (33525)		EA	1									14	18
P H		PACKING, PREFORMED 214752 (33525)		EA	1				*	*	*	*	*	14	19

(1) SMR CODE	(2) FEDERAL STOCK NUMBER	(3) DESCRIPTION REF NUMBER & MFR CODE	(4) USABLE ON CODE	(5) UNIT OF MEAS	(6) 30-DAY DS MAINT ALLOWANCE	(7) 30-DAY GS MAINT ALLOWANCE	(8) 1-YR ALW PER 100 EQUIP CNTGY	(9) DEPOT MAINT ALW PER 100 EQUIP	(10) ILLUS- TRATION			
									ALLOWANCE		(a) FIG. NO.	(b) ITEM NO.
									(a) 1-20	(b) 21-50		
X2H		BODY 247093 (33525)		EA	1					14	20	
X2H		RING, BACK-UP 5-193 (03818)		EA	1					14	21	
P H	5330-684-7784	PACKING, PREFORMED MS29561-111 (96906)		EA	1			*	*	14	22	
P H	1650-922-9587	SEAT 247162 (33525)		EA	1			*	*	14	23	
P H	1650-922-9583	SPRING, CHECK 212828 (33525)		EA	1			*	*	14	24	
X2H		GUIDE 249525 (33525)		EA	1					14	25	
X2H		SHUTTLE 247132 (33525)		EA	1					14	26	
X2H		SCREW, LOCKING 247044 (33525)		EA	1			*	*	14	27	
X2H		BUSHING 248042 (33525)		EA	1					14	28	
X2H		SCREW, LOCKING 247044 (33525)		EA	1					14	29	
P H	5930-404-7433	SWITCH 247050 (33525)		EA	1			*	*	14	30	
P H		SCREW, BRACKET AN500AD3-4 (88044)		EA	2			*	*	14	31	
X2H		BRACKET, SWITCH 247315 (33525)		EA	1					14	32	
X1		ADAPTER, BODY 277405 (33525)		EA	1					14	33	
X2H		NUT JAM 247137 (33525)		EA	1					14	34	
X2H		RING, BACK-UP 5540-0119 (33525)		EA	1					14	35	
P H	5330-835-8974	PACKING, PREFORMED MS29561-119 (96906)		EA	1			*	*	14	36	
X2H		RING, BACK-UP 5540-0119 (33525)		EA	1					14	37	
X1		HOUSING, OUTLET 876017 (33525)		EA	1					14	38	
		GROUP 04 - ELECTRIC MOTOR										
P F		NUT, SELF-LOCKING, HEXAGON: RELAY MOUNTING 5847-0600 (33525)	A	EA	4	*	*	*	*	15	1	
P F	5310-167-0832	WASHER, FLAT: RELAY MTG AN960-6L (88044)	A	EA	4	*	*	*	*	15	2	
X2F		BARRIER, WIRE 253720 (33525)	A	EA	1					15	3	
P F		SCREW, MACHINE: RELAY MTG 5129-0609 (33525)	A	EA	4	*	*	*	*	15	4	
P F	5310-167-0832	WASHER, FLAT: RELAY MTG AN960-6L (88044)	A	EA	4	*	*	*	*	15	5	
P F		RELAY, MOTOR 277363 (33525)	A	EA	1	*	*	*	*	15	6	
P F		GROMMET: RELAY MTG 5608-0006 (33525)	A	EA	2	*	*	*	*	15	7	

(1) SMR CODE	(2) FEDERAL STOCK NUMBER	(3) DESCRIPTION REF NUMBER & MFR CODE	USABLE ON CODE	(4) UNIT OF MEAS	(5) QTY INC IN UNIT	(6) 30-DAY DS MAINT ALLOWANCE			(7) 30-DAY GS MAINT ALLOWANCE			(8) 1-YR ALW PER 100 EQUIP CNTGY	(9) DEPOT MAINT ALW PER 100 EQUIP	(10) ILLUS- TRATION	
						(a)	(b)	(c)	(a)	(b)	(c)			(a)	(b)
						1-20	21-50	51-100	1-20	21-50	51-100			FIG. NO.	ITEM NO.
P F	5305-498-2405	SCREW, MACHINE: BRACKET MTG 5129-1109 (33525)	A	EA	2	*	*	*	*	*	*	*	*	15	8
P F	5310-045-3296	WASHER, LOCK: BRACKET MTG MS35338-43 (96906)	A	EA	2	*	*	*	*	*	*	*	*	15	9
P F	5310-167-0818	WASHER, FLAT: BRACKET MTG AN960-10 (88044)	A	EA	2	*	*	*	*	*	*	*	*	15	10
X2F		BRACKET, RELAY 277365 (33525)	A	EA	1									15	11
P F	5305-253-5607	SCREW, DIVE: NAMEPLATE MTG MS21318- (96906)	A	EA	2	*	*	*	*	*	*	*	*	15	12
X2F		NAMEPLATE 207298 (33525)	A	EA	1									15	13
P F		NUT, SELF-LOCKING, HEXAGON: CABLE ASSEMBLY MTG 5847-0600 (33525)	A	EA	4	*	*	*	*	*	*	*	*	15	14
P F	5310-167-0816	WASHER, FLAT: CABLE ASSEMBLY MTG AN960-6 (88044)	A	EA	4	*	*	*	*	*	*	*	*	15	15
P F		SCREW MACHINE: CABLE ASSEMBLY MTG 5129-0608 (33525)	A	EA	4	*	*	*	*	*	*	*	*	15	16
P F	5310-167-0816	WASHER, FLAT: CABLE ASSEMBLY MTG AN960-6 (88044)	A	EA	4	*	*	*	*	*	*	*	*	15	17
P F	5340-255-5016	CLAMP WIRE 247298 (33525)	A	EA	6	*	*	*	*	*	*	*	*	15	18
P F		CABLE ASSEMBLY 895043 (33525)	A	EA	1	*	*	*	*	*	*	*	*	15	19
P F		NUT, SELF-LOCKING, HEXAGON: BRACKET MTG 5847-1100 (33525)	A	EA	4	*	*	*	*	*	*	*	*	15	20
P F	5310-167-0834	WASHER, FLAT: BRACKET MTG AN960-10L (88044)	A	EA	4	*	*	*	*	*	*	*	*	15	21
P F	5305-182-9324	SCREW, MACHINE: BRACKET MTG 5129-1110 (33525)	A	EA	*	*	*	*	*	*	*	*	*	15	22
P F	5310-167-0834	WASHER, FLAT: BRACKET MTG AN960-10L (88044)	A	EA	4	*	*	*	*	*	*	*	*	15	23
P F		BOLT MACHINE: BRACKET TO MOTOR 1264-2416 (33525)	A	EA	4	*	*	*	*	*	*	*	*	15	24
P F	5310-637-9541	WASHER, LOCK: BRACKET TO MOTOR MS35338-4 (96906)	A	EA	2	*	*	*	*	*	*	*	*	15	25
P F	5310-167-0821	WASHER, FLAT: BRACKET TO MOTOR AN960-616 (88044)	A	EA	2	*	*	*	*	*	*	*	*	15	26
X2F		BRACKET: CABLE ASSEMBLY 277364 (33525)	A	EA	1									15	27
P F		NUT, SELF-LOCKING, HEXAGON: TIMER MTG 5847-0600 (33525)	A	EA	4	*	*	*	*	*	*	*	*	15	28
P F	5310-167-0816	WASHER, FLAT: TIMER MTG AN960-6 (88044)	A	EA	4	*	*	*	*	*	*	*	*	15	29
P F		SCREW, MACHINE: TIMER MTG 5129-0608 (33525)	A	EA	4	*	*	*	*	*	*	*	*	15	30
P F	5310-167-0816	WASHER, FLAT: TIMER MTG AN960-6 (88044)	A	EA	4	*	*	*	*	*	*	*	*	15	31
P F		TIMER, DUMP 279076 (33525)	A	EA	1	*	*	*	*	*	*	*	*	15	32
P F		SCREW, MACHINE: BRACKET MTG 5129-1107 (33525)	A	EA	2	*	*	*	*	*	*	*	*	15	33
P F	5310-045-3296	WASHER, LOCK: BRACKET MTG MS35338-43 (96906)	A	EA	2	*	*	*	*	*	*	*	*	15	34

(1) SMR CODE	(2) FEDERAL STOCK NUMBER	(3) DESCRIPTION REF NUMBER & MFR CODE	USABLE ON CODE	(4) UNIT OF MEAS	(5) QTY INC IN UNIT	(6) 30-DAY DS MAINT ALLOWANCE			(7) 30-DAY GS MAINT ALLOWANCE			(8) 1-YR ALW PER 100 EQUIP CNTGY	(9) DEPOT MAINT ALW PER 100 EQUIP	(10) ILLUS- TRATION	
						(a)	(b)	(c)	(a)	(b)	(c)			(a)	(b)
						1-20	21-50	51-100	1-20	21-50	51-100			FIG. NO.	ITEM NO.
P F	5310-167-0834	WASHER, FLAT: BRACKET MTG AN960-10L (88044)	A	EA	2	*	*	*	*	*	*	*	*	15	35
X2F		BRACKET TIMER 254010 (33255)	A	EA	1									15	36
P F		RING, SNAP: SHAFT 254366 (33525)	A	EA	1	*	*	*	*	*	*	*	*	15	37
P F	4310-03-5199	SHAFT, SPLINE 241193 (33525)	A	EA	1	*	*	*	*	*	*	*	*	15	38
P F	2995-237-5653	GASKET, COMPRESSOR TO MOTOR MS9135-01 (96906)	A	EA	1	*	*	*	*	*	*	*	*	15	39
X2F		TERMINAL, LUG MS25036-49 (96906)	A	EA	1									15	40
P F	5905-442-5194	RESISTOR, FIXED 251571 (33525)	A	EA	1	*	*	*	*	*	*	*	*	15	41
P F		BOLT, MACHINE: SUPPORT TO MOTOR 1264-2414 (33525)	A	EA	2	*	*	*	*	*	*	*	*	15	42
P F	5310-637-9541	WASHER, LOCK: SUPPORT TO MOTOR MS35338-46 (96906)	A	EA	2	*	*	*	*	*	*	*	*	15	43
P F	5310-167-0821	WASHER, FLAT: SUPPORT TO MOTOR AN960-616 (88044)	A	EA	2	*	*	*	*	*	*	*	*	15	44
P O	5330-152 -3361	INSULATOR 279607 (33525)	A	EA	1	*	*	*	*	*	*	*	*	15	45
X2H		SUPPORT, LONG 277362 (33525)	A	EA	1									15	46
X2H		SUPPORT, SHORT 277361 (33525)	A	EA	1									15	47
P F R	6105-212-5841	MOTOR ASSEMBLY D647 (72121)	A	EA	1	*	*	*	*	*	*	*	*	15	48
P H	5305-722-4709	SCREW, MACHINE: GEAR HOUSING MTG AN501A16-14 (88044)	A	EA	4				*	*	*	*	*	16	1
X2H		GEAR HOUSING ASSEMBLY B2455 (72121)	A	EA	1									16	
X2H		RING, RETAINING 5100-78 (79136)	A	EA	1									16	2
X2H		RING, RETAINING 5000-185 (79136)	A	EA	1									16	3
P H		BEARING, BALL 902000F5 (43991)	A	EA	1				*	*	*	*	*	16	4
P H		NUT STOP AN365-428 (88044)	A	EA	3				*	*	*	*	*	16	5
P H	5310-141-1795	WASHER FLAT AN960-416 (88044)	A	EA	3				*	*	*	*	*	16	6
P H	5306-151-1423	BOLT MACHINE AN4-11A (88044)	A	EA	3				*	*	*	*	*	16	7
P H	5310-141-1795	WASHER, FLAT AN960-416 (88044)	A	EA	3				*	*	*	*	*	16	8
X2H		HOUSING, GEAR A5623 (72121)	A	EA	1									16	9
X2H		DOWEL, GEAR BOX A5623 (72121)	A	EA	3									16	10
X2H		PLUG, SPLINE A5902 (72121)	A	EA	1									16	11
P H		SHAFT, SPLINE B2457 (72121)	A	EA	1				*	*	*	*	*	16	12

(1) SMR CODE	(2) FEDERAL STOCK NUMBER	(3) DESCRIPTION REF NUMBER & MFR CODE	(4) USABLE ON CODE	(5) UNIT OF MEAS	(6) 30-DAY DS MAINT ALLOWANCE	(7) 30-DAY GS MAINT ALLOWANCE	(8) 1-YR ALW PER 100 EQUIP CNTGY	(9) DEPOT MAINT ALW PER 100 EQUIP	(10) ILLUS- TRATION			
									(a) (b)		(a) FIG. NO.	(b) ITEM NO.
									(a) 1-20	(b) 21-50		
P H		BEARING, BALL 9099DDF5 (43991)	A	EA	3	*	*	*	*	16	13	
P H		SHAFT SET, COUNTER A9510-1 (72121)	A	EA	1		*	*	*	16		
X1		SHAFT, COUNTER B2456-1 (72121)	A	EA	3					16	14	
P H		BEARING, BALL 9099DDF5 (43991)	A	EA	3		*	*	*	16	15	
X2H		HOUSING, GEAR C1419 (72121)	A	EA	1					16	16	
P F	5310-926-1852	NUT, STOP: FILTER MTG MS21083N6 (96906)	A	EA	*	*	*	*	*	16	17	
P F	5310-167-6704	WASHER, FLAT: FILTER MTG AN960B16 (88044)	A	EA	1	*	*	*	*	16	18	
P F	5310-687-6705	NUT, PLAIN HEXAGON: FILTER MTG MS25082B6 (96906)	A	EA	1	*	*	*	*	16	19	
P F	5310-167-0704	WASHER, FLAT: FILTER MTG AN960B616 (88044)	A	EA	1	*	*	*	*	16	20	
P F	5310-926-1852	NUT, STOP FILTER MTG MS21083N6 (96906)	A	EA	1	*	*	*	*	16	21	
P F	5310-167-6704	WASHER, FLAT: FILTER MTG AN96B6616 (88044)	A	EA	1	*	*	*	*	16	22	
P F	5305-559-8145	SCREW, MACHINE: FILTER MTG MS35265-42 (96906)	A	EA	2	*	*	*	*	16	23	
P F		FILTER, RADIO INTERFERENCE 279 (02777)	A	EA	1	*	*	*	*	16	24	
P H	5310-687-6705	NUT, PLAIN, HEXAGON: TERMINAL MS25082B6 (96906)	A	EA	1	*	*	*	*	16	25	
P H	5310-167-0704	WASHER, FLAT: TERMINAL AN960B616 (88044)	A	EA	1		*	*	*	16	26	
X2H		WASHER, SPACE A5914 (72121)	A	EA	1					16	27	
P H		INSULATOR A5905 (72121)	A	EA	1		*	*	*	16	28	
P H	5305-958-5450	SCREW, MACHINE BLOCK MTG MS35190-240 (96906)	A	EA	4		*	*	*	16	29	
P H	5310-550-0284	WASHER, LOCK BLOCK MTG MS353316-9 (96906)	A	EA	4		*	*	*	16	30	
X2H		BLOCK, TERMINAL B2458 (72121)	A	EA	1					16	31	
P H		INSULATOR AN4032 (72121)	A	EA	1		*	*	*	16	32	
X2H		TERMINAL ASSEMBLY A5974 (72121)	A	EA	1					16	33	
X2H		BOLT, TERMINAL A4125 (72121)	A	EA	1					16	34	
P F	5305-253-5606	SCREW, MACHINE: NAMEPLATE MTG MS21318-7 (96906)	A	EA	2	*	*	*	*	16	35	
X2F		NAMEPLATE A6711 (72121)	A	EA	1					16	36	
P F	5305-582-5807	SCREW, MACHINE: END BELL CAP AN500A6-6 (88044)	A	EA	8	*	*	*	*	16	37	
P F	5310-188-7721	WASHER, FLAT: END BELL CAP AN960PD6 (88044)	A	EA	8	*	*	*	*	16	38	
X2F		INSULATOR: CAP A5889 (72121)	A	EA	4					16	39	

(1) SMR CODE	(2) FEDERAL STOCK NUMBER	(3) DESCRIPTION REF NUMBER & MFR CODE	USABLE ON CODE	(4) UNIT OF MEAS	(5) QTY INC IN UNIT	(6) 30-DAY DS MAINT ALLOWANCE			(7) 30-DAY GS MAINT ALLOWANCE			(8) 1-YR ALW PER 100 EQUIP CNTGY	(9) DEPOT MAINT ALW PER 100 EQUIP	(10) ILLUS- TRATION	
						(a)	(b)	(c)	(a)	(b)	(c)			(a)	(b)
						1-20	21-50	51-100	1-20	21-50	51-100			FIG. NO.	ITEM NO.
X2F		CAP, END BELL C1558 (72121)	A	EA	1									16	40
P H	5310-926-1852	NUT, STOP: FAN MS21083N6 (96906)	A	EA	1				*	*	*	*	*	16	41
P H	5305-292-7785	SETSCREW: FAN AN565DC8H4 (88044)	A	EA	2				*	*	*	*	*	16	42
P H		FAN A5387 (72121)	A	EA	1				*	*	*	*	*	16	43
P H		SCREW, CAP, SOCKET HEAD: RETAINER MTG A7043 (72121)	A	EA	4				*	*	*	*	*	16	44
X2H		PLATE, GROUNDING A7L173 (72121)	A	EA	1									16	45
X2H		RETAINER, BEARING A4044 (72121)	A	EA	1									16	46
P F	5305-281-6390	SCREW, ASSEMBLED WASHER: BRUSH MTG 45398 (24617)	A	EA	4	*	*	*	*	*	*	*	*	16	47
P F	5977-754-8046	BRUSH ASSEMBLY A5915 (72121)	A	EA	4	*	*	*	*	*	*	*	*	16	48
P F		BRUSH ASSEMBLY A5907 (72121)	A	EA	4	*	*	*	*	*	*	*	*	16	49
P H	5305-059-4553	SCREW, MACHINE: SUPPORT MTG MS35190-238 (96906)	A	EA	4				*	*	*	*	*	16	50
X2H		SUPPORT, CAP A2867 (72121)	A	EA	4									16	51
X2H		END BELL ASSEMBLY C1564 (72121)	A	EA	1									16	52
P H	5305-740-2816	SCREW, ASSEMBLE WASHER: LEAD MTG 7402816 (19207)	A	EA	1				*	*	*	*	*	16	53
P H	5310-596-9409	WASHER, FLAT: LEAD MTG ES960B8 (72121)	A	EA	1				*	*	*	*	*	16	54
P H	5305-695-7205	SCREW, ASSEMBLED WASHER: LEAD MTG 7538889 (19207)	A	EA	3				*	*	*	*	*	16	55
X2H		LEAD, WIRE A4820 (72121)	A	EA	1									16	56
X2H		STRAP, TERMINAL A5124 (72121)	A	EA	3									16	57
P H		NUT, LOCK: BRUSH HOLDER AN364-632A (88044)	A	EA	8				*	*	*	*	*	16	58
P H		SCREW, BRUSH HOLDER AN505-6-46 (88044)	A	EA	8				*	*	*	*	*	16	59
X2H		BRUSH HOLDER ASSEMBLY B2459 (72121)	A	EA	1									16	60
X1		SPRING, BRUSH HOLDER B2257 (72121)	A	EA	8									16	61
P H	5305-957-2639	SCREW, MACHINE: END BELL MTG MS35191-290 (96906)	A	EA	4				*	*	*	*	*	16	62
P H	5305-514-7506	SCREW, MACHINE: SEGMENTS MTG MS35265-26 (96906)	A	EA	8				*	*	*	*	*	16	63
X2H		SEGMENT, FRONT SUPPORT, INSULATING A5561 (72121)	A	EA	2									16	64
X2H		SEGMENT, FRONT SUPPORT, CONDUCTING A5562 (72121)	A	EA	2									16	65
X1		END BELL C321 (72121)	A	EA	1									16	65

(1) SMR CODE	(2) FEDERAL STOCK NUMBER	(3) DESCRIPTION REF NUMBER & MFR CODE	USABLE ON CODE	(4) UNIT OF MEAS	(5) QTY INC IN UNIT	(6) 30-DAY DS MAINT ALLOWANCE			(7) 30-DAY GS MAINT ALLOWANCE			(8) 1-YR ALW PER 100 EQUIP CNTGY	(9) DEPOT MAINT ALW PER 100 EQUIP	(10) ILLUS- TRATION	
						(a)	(b)	(c)	(a)	(b)	(c)			(a)	(b)
						1-20	21-50	51-100	1-20	21-50	51-100			FIG. NO.	ITEM NO.
X2H		SPRING BEARING 1OZ (43991)	A	EA	1									16	66
X1		ROTOR ASSEMBLY C1556 (72121)	A	EA	1									16	67
P H		BEARING, BALL: ROTOR SHAFT 9014DDC3G91 (43991)	A	EA	1				*	*	*	*	*	16	68
P H		BEARING, BALL: GEAR SHAFT 9025DDC3G75 (43991)	A	EA	1				*	*	*	*	*	16	69
X2H		RING, BEARING A5903 (72121)	A	EA										16	70
P H	5305-531-0298	SCREW, MACHINE: FAN MTG MS3526-15 (96906)	A	EA	4				*	*	*	*	*	16	71
P H		FAN, DRIVE END B2289 (72121)	A	EA	1				*	*	*	*	*	16	72
X2H		HUB, FAN A5904 (72121)	A	EA	1									16	73
X2H		KEY, WOODRUFF 207 (81130)	A	EA	1									16	74
X1		STATOR ASSEMBLY C1563 (72121)	A	EA	1									16	75
P F	5305-984-4988	SCREW, MACHINE: TIMER MTG MS35206-228 (96906)	B	EA	4	*	*	*	*	*	*	*	*	17	1
P F	5310-045-4007	WASHER, LOCK: TIMER MTG M35338-41 (96906)	B	EA	4	*	*	*	*	*	*	*	*	17	2
P F		TIMER ASSEMBLY A50109 (07860)	B	EA	1	*	*	*	*	*	*	*	*	17	3
P F	5305-889-3000	SCREW, MACHINE: BRACKET MTG MS35206-230 (96906)	B	EA	2	*	*	*	*	*	*	*	*	17	4
P F	5310-045-4007	WASHER, LOCK: BRACKET MTG MS35338-41 (96906)	B	EA	2	*	*	*	*	*	*	*	*	17	5
X2F		BRACKET, TIMER A49890 (07860)	B	EA	1									17	6
P F	5310-761-6882	NUT, PLAIN, HEXAGON: RELAY MTG MS51967-2 (96906)	B	EA	1	*	*	*	*	*	*	*	*	17	7
P F	5310-582-5965	WASHER, LOCK: RELAY MTG MS35338-4 (96906)	B	EA	1	*	*	*	*	*	*	*	*	17	8
P F		SCREW, CAP, HEXAGON HEAD: RELAY MTG MS35291-6 (96906)	B	EA	1	*	*	*	*	*	*	*	*	17	9
P F	5310-761-6882	NUT, PLAIN HEXAGON: RELAY MTG MS51967-2 (96906)	B	EA	1	*	*	*	*	*	*	*	*	17	10
P F	5310-582-5965	WASHER, LOCK: RELAY MTG MS35338-44 (96906)	B	EA	1	*	*	*	*	*	*	*	*	17	11
P F	5305-958-5246	SCREW, MACHINE: RELAY MTG MS35190-289 (96906)	B	EA	1	*	*	*	*	*	*	*	*	17	12
P F	5945-660-9315	RELAY, CONTACTOR MS24171D1 (96906)	B	EA	1	*	*	*	*	*	*	*	*	17	13
P F	5310-934-9747	NUT, PLAIN, HEXAGON: END PLATE MTG MS35649-262 (96906)	B	EA	4	*	*	*	*	*	*	*	*	17	14
P F	5310-045-4007	WASHER, LOCK: END PLATE MTG MS35338-41 (96906)	B	EA	4	*	*	*	*	*	*	*	*	17	15
P F	5305-889-3000	SCREW, MACHINE: END PLATE MTG MS35206-230 (96906)	B	EA	4	*	*	*	*	*	*	*	*	17	16
P F	5325-281-1557	GROMMET, RUBBER MS35489-17 (96906)	B	EA	1	*	*	*	*	*	*	*	*	17	17

(1) SMR CODE	(2) FEDERAL STOCK NUMBER	(3) DESCRIPTION REF NUMBER & MFR CODE	USABLE ON CODE	(4) UNIT OF MEAS	(5) QTY INC IN UNIT	(6) 30-DAY DS MAINT ALLOWANCE			(7) 30-DAY GS MAINT ALLOWANCE			(8) 1-YR ALW PER 100 EQUIP CNTGY	(9) DEPOT MAINT ALW PER 100 EQUIP	(10) ILLUS- TRATION	
						(a) 1-20	(b) 21-50	(c) 51-100	(a) 1-20	(b) 21-50	(c) 51-100			(a) FIG. NO.	(b) ITEM NO.
						X2F		END PLATE B36708 (07860)	B	EA	1				
P F	5310-934-9747	NUT, PLAIN, HEXAGON: CONNECTOR MTG MS35649-262 (96906)	B	EA	4	*	*	*	*	*	*	*	*	17	19
P F	5310-045-4007	WASHER, LOCK: CONNECTOR MTG MS35338-41 (96906)	B	EA	4	*	*	*	*	*	*	*	*	17	20
P F	5305-889-3000	SCREW, MACHINE: CONNECTOR MTG MS35206-230 (96906)	B	EA	4	*	*	*	*	*	*	*	*	17	21
P F	5935-835-4337	CONNECTOR, INPUT MS3102R32-1P (96906)	B	EA	1	*	*	*	*	*	*	*	*	17	22
P F	5310-934-9747	NUT, PLAIN HEXAGON: SUPPORT MTG MS35649-262 (96906)	B	EA	4	*	*	*	*	*	*	*	*	17	23
P F	5310-045-4007	WASHER, LOCK: SUPPORT MTG MS35338-41 (96906)	B	EA	4	*	*	*	*	*	*	*	*	17	24
P F	5305-889-3000	SCREW, MACHINE: SUPPORT MTG MS35206-230 (96906)	B	EA	4	*	*	*	*	*	*	*	*	17	25
X2F		SUPPORT, RECEPTACLE B36707 (07860)	B	EA	1									17	26
P F	5310-934-9739	NUT, PLAIN, HEXAGON: RELAY MTG MS35649-242 (96906)	B	EA	2	*	*	*	*	*	*	*	*	17	27
P F	5310-543-2410	WASHER, LOCK: RELAY MTG MS35338-40 (96906)	B	EA	2	*	*	*	*	*	*	*	*	17	28
P F	5305-983-6730	SCREW, MACHINE: RELAY MTG MS35206-218 (96906)	B	EA	2	*	*	*	*	*	*	*	*	17	29
P F		RELAY 33RJE1200NG516 (88419)	B	EA	1	*	*	*	*	*	*	*	*	17	30
X2F		SPACER, RELAY A50116 (07860)	B	EA	1									17	36
P F	5310-934-9747	NUT, PLAIN, HEXAGON: CAPACITOR CLAMP MTG MS35649-262 (96906)	B	EA	1	*	*	*	*	*	*	*	*	17	32
P F	5310-045-4007	WASHER, LOCK: CAPACITOR CLAMP MTG MS35338-41 (96906)	B	EA	1	*	*	*	*	*	*	*	*	17	33
P F	5305-889-9300	SCREW, MACHINE: CAPACITOR CLAMP MTG MS35206-231 (96906)	B	EA	1	*	*	*	*	*	*	*	*	17	34
P F	5310-983-8483	WASHER, FLAT: CAPACITOR CLAMP MTG MS27183-5 (96906)	B	EA	1	*	*	*	*	*	*	*	*	17	35
X2F		CLAMP: CAPACITOR HP6N (09922)	B	EA	1									17	36
P F		CAPACITOR 6000397G030DX4 (56289)	B	EA	1	*	*	*	*	*	*	*	*	17	37
P O	5330-152-3361	INSULATOR SHEET 279607 (33525)	B	EA	1	*	*	*	*	*	*	*	*	17	38
P F	5905-828-3421	RESISTOR, FIXED MS35043-87 (96906)	B	EA	1	*	*	*	*	*	*	*	*	17	39
X2H		STAND OFF, TERMINAL A50720 (07860)	B	EA	1									17	40
P H	5310-934-9757	NUT, PLAIN, HEXAGON: GROUNDING STUD MS35649-282 (96906)	B	EA	1				*	*	*	*	*	17	41
P H	5310-045-3299	WASHER, LOCK: GROUNDING STUD MS35338-42 (96906)	B	EA	1				*	*	*	*	*	17	42
P H	5961-880-2938	DIODE IN4003 (02735)	B	EA	3				*	*	*	*	*	17	43
P H	5310-809-8544	WASHER, FLAT: GROUNDING STUD MS27183-7 (96906)	B	EA	1				*	*	*	*	*	17	44

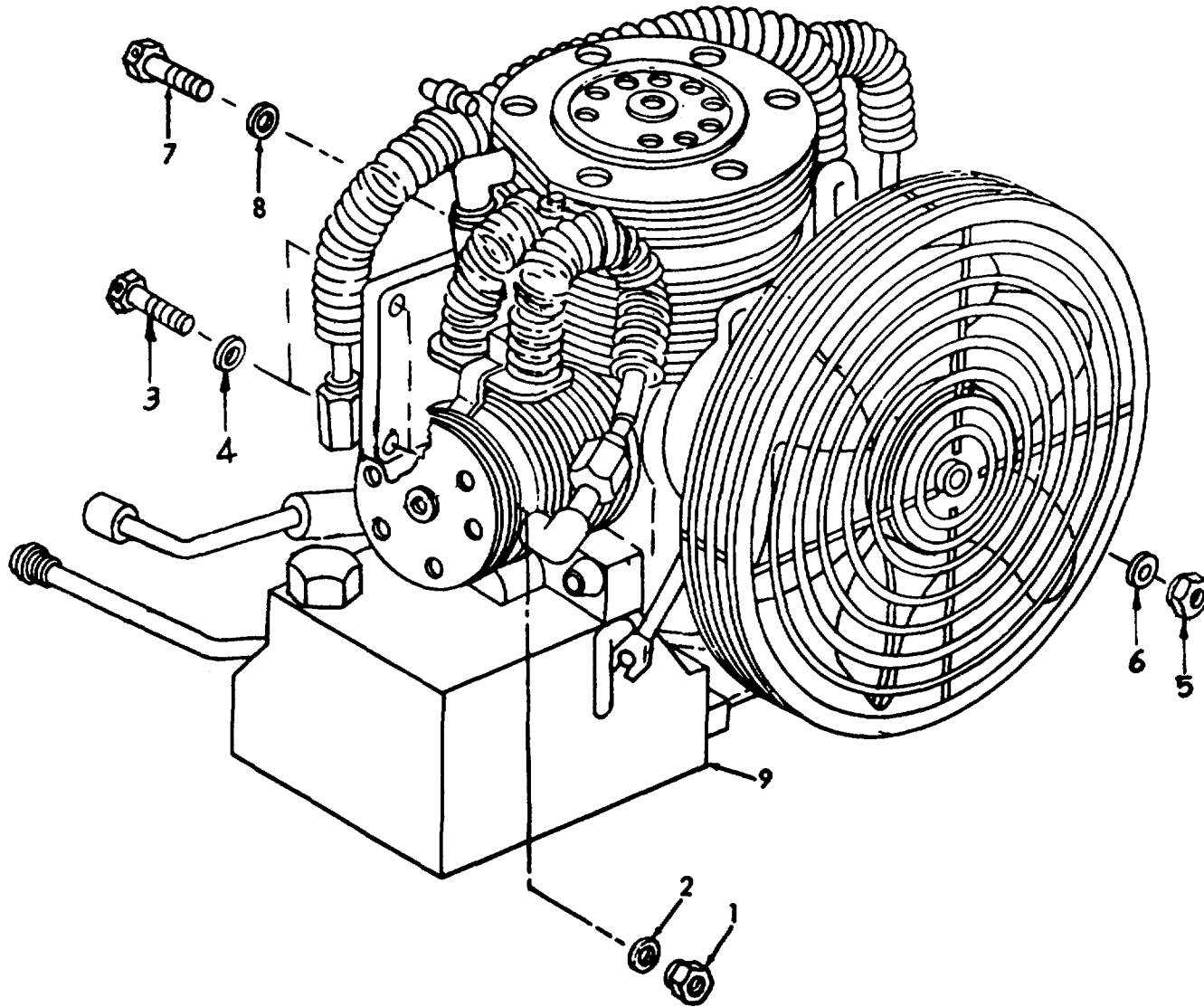
(1) SMR CODE	(2) FEDERAL STOCK NUMBER	(3) DESCRIPTION REF NUMBER & MFR CODE	USABLE ON CODE	(4) UNIT OF MEAS	(5) QTY INC IN UNIT	(6) 30-DAY DS MAINT ALLOWANCE			(7) 30-DAY GS MAINT ALLOWANCE			(8) 1-YR ALW PER 100 EQUIP CNTGY	(9) DEPOT MAINT ALW PER 100 EQUIP	(10) ILLUS- TRATION	
						(a)	(b)	(c)	(a)	(b)	(c)			(a)	(b)
						1-20	21-50	51-100	1-20	21-50	51-100			FIG. NO.	ITEM NO.
X2H		STUD, GROUNDING A50722-2 (07860)	B	EA	1									17	45
P H	5310-934-9747	NUT, PLAIN HEXAGON: GROUNDING STUD MS35649-262 (96906)	B	EA	1				*	*	*	*	*	17	46
P H	5310-045-4007	WASHER, LOCK: GROUNDING STUD MS35338-41 (96906)	B	EA	1				*	*	*	*	*	17	47
P H	5310-983-8483	WASHER, FLAT: GROUNDING STUD MS27183-5 (96906)	B	EA	1				*	*	*	*	*	17	48
X2H		STUD, GROUNDING A50722-1 (07860)	B	EA	1									17	49
P F	5305-265-3209	SCREW, CAP, HEXAGON HEAD: MOTOR MTG MS90725-58 (96906)	B	EA	4	*	*	*	*	*	*	*	*	17	50
P F	5310-637-9541	WASHER, LOCK: MOTOR MTG MS35338-46 (96906)	B	EA	4	*	*	*	*	*	*	*	*	17	51
X2H		BASE, MOTOR D18464-2 (07860)	B	EA	1									17	52
P F		SCREW, MACHINE: COVER MTG MS35223-13 (96906)	B	EA	4	*	*	*	*	*	*	*	*	18	1
P F	5310-543-2410	WASHER, LOCK: COVER MTG MS35338-40 (96906)	B	EA	4	*	*	*	*	*	*	*	*	18	2
X2F		COVER, FILTER BOX A50170 (07860)	B	EA	1									18	3
P F	5310-934-9747	NUT, PLAIN, HEXAGON: FILTER MTG MS35649-262 (96906)	B	EA	4	*	*	*	*	*	*	*	*	18	4
P F	5310-045-4007	WASHER, LOCK: FILTER MTG MS35338-41 (96906)	B	EA	4	*	*	*	*	*	*	*	*	18	5
P F	5305-984-4988	SCREW, MACHINE: FILTER MTG MS35206-228 (96906)	B	EA	4	*	*	*	*	*	*	*	*	18	6
P F		INDUCTOR ASSEMBLY B37388 (07860)	B	EA	1	*	*	*	*	*	*	*	*	18	7
P F		FILTER, RADIO NOISE B37820 (07860)	B	EA	1	*	*	*	*	*	*	*	*	18	8
P F	5305-990-6444	SCREW, MACHINE: BOX MTG MS35207-261 (96906)	B	EA	4	*	*	*	*	*	*	*	*	18	9
P F	5310-045-3296	WASHER, LOCK: BOX MTG MS35338-43 (96906)	B	EA	4	*	*	*	*	*	*	*	*	18	10
X2F		BOX, FILTER B36984 (07860)	B	EA	1									18	11
P F R	6315-432-1579	MOTOR ASSEMBLY MS11DA4-1 (07860)	B	EA	1	*	*	*	*	*	*	*	*	18	
P H	5310-761-6882	NUT, PLAIN, HEXAGON: BRACKET MTG MS51967-2 (96906)	B	EA	4				*	*	*	*	*	18	12
P H	5310-582-5965	WASHER, LOCK: BRACKET MTG MS35338-44 (96906)	B	EA	4				*	*	*	*	*	18	13
P F		COVER, END B37604 (07860)	B	EA	1	*	*	*	*	*	*	*	*	18	14
X2H		SPACER, FAN 9270A257 (06540)	B	EA	4									18	15
X2H	5310-851-2674	NUT, JAM MS35691-1 (96906)	B	EA	4									18	16
X2H	5310-543-2410	WASHER, LOCK MS35338-40 (96906)	B	EA	1									18	17
X2H		STUD, FRAME A8785-166 (07860)	B	EA	4									18	18

(1) SMR CODE	(2) FEDERAL STOCK NUMBER	(3) DESCRIPTION REF NUMBER & MFR CODE	(4) USABLE ON CODE	(5) UNIT OF MEAS	QTY INC IN UNIT	(6) 30-DAY DS MAINT ALLOWANCE			(7) 30-DAY GS MAINT ALLOWANCE			(8) 1-YR ALW PER 100 EQUIP CNTGY	(9) DEPOT MAINT ALW PER 100 EQUIP	(10) ILLUS- TRATION	
						(a) 1-20	(b) 21-50	(c) 51-100	(a) 1-20	(b) 21-50	(c) 51-100			(a) FIG. NO.	(b) ITEM NO.
P H	5310-926-1862	NUT, STOP MS21083N6 (96906)	B	EA	1				*	*	*	*	*	18	19
P H	5305-724-6738	SETSCREW: FAN MS51965-54 (96906)	B	EA	1				*	*	*	*	*	18	20
P H		FAN, COOLING C26065 (07860)	B	EA	1				*	*	*	*	*	18	21
P F	5305-984-4988	SCREW, MACHINE: COVER MTG MS35206-228 (96906)	B	EA	16	*	*	*	*	*	*	*	*	18	22
P F	5310-045-4007	WASHER, LOCK: COVER MTG MS35338-41 (96906)	B	EA	16	*	*	*	*	*	*	*	*	18	23
X2F		COVER, SIDE A49886 (07860)	B	EA	4									18	24
P H		SCREW, MACHINE: POSITIVE BRUSH HOLDER MTG MS35219-45 (96906)	B	EA	4				*	*	*	*	*	18	25
P H		SCREW, MACHINE: NEGATIVE BRUSH HOLDER MTG MS35229-120 (96906)	B	EA	4				*	*	*	*	*	18	25
P H		WASHER, FLAT: POSITIVE BRUSH HOLDER MTG MS15795-741 (96906)	B	EA	4				*	*	*	*	*	18	26
P H	5310-983-8483	WASHER, FLAT: NEGATIVE BRUSH HOLDER MTG MS15795-105 (96906)	B	EA	4				*	*	*	*	*	18	26
X2H		WASHER, NYLON: POSITIVE BRUSH HOLDER MTG B2749-4 (07860)	B	EA	4									18	27
X2H		BUSHING, INSULATOR: POSITIVE BRUSH HOLDER MTG B26377-4 (07860)	B	EA	4									18	28
X2H		SPACER: NEGATIVE BRUSH HOLDER MOUNTING A49998-1 (07860)	B	EA	4									18	29
X2H		SPACER: POSITIVE BRUSH HOLDER MOUNTING A49998-2 (07860)	B	EA	4									18	29
P F	5305-984-4988	SCREW, MACHINE: BRUSH MTG MS35206-228 (96906)	B	EA	4	*	*	*	*	*	*	*	*	18	30
P F	5310-045-4007	WASHER, LOCK: BRUSH MTG MS35338-41 (96906)	B	EA	4	*	*	*	*	*	*	*	*	18	31
P F	5310-983-8483	WASHER, FLAT: BRUSH MTG MS15795-105 (96906)	B	EA	4	*	*	*	*	*	*	*	*	18	32
P F		BRUSH, ELECTRICAL, CONTACT A49962 (07860)	B	EA	8	*	*	*	*	*	*	*	*	18	33
X2H		BRUSH HOLDER ASSEMBLY B36937 (07860)	B	EA	4									18	
X2H		SCREW, MACHINE: RETAINER MTG MS35241-20 (96906)	B	EA	8									18	34
X2H		RETAINER, BRUSH A49985 (07860)	B	EA	4									18	35
X2H	5305-531-0137	SETSCREW: STUD MS51021-21 (96906)	B	EA	4									18	36
P H		SPRING, BRUSH A49967 (07860)	B	EA	8				*	*	*	*	*	18	37
X2H		STUD, SPRING A49986 (07860)	B	EA	4									18	38
X1		BODY, BRUSH HOLDER B36936 (07860)	B	EA	4									18	39

(1) SMR CODE	(2) FEDERAL STOCK NUMBER	(3) DESCRIPTION REF NUMBER & MFR CODE	USABLE ON CODE	(4) UNIT OF MEAS	(5) QTY INC IN UNIT	(6) 30-DAY DS MAINT ALLOWANCE			(7) 30-DAY GS MAINT ALLOWANCE			(8) 1-YR ALW PER 100 EQUIP CNTGY	(9) DEPOT MAINT ALW PER 100 EQUIP	(10) ILLUS- TRATION	
						(a) 1-20	(b) 21-50	(c) 51-100	(a) 1-20	(b) 21-50	(c) 51-100			(a) FIG. NO.	(b) ITEM NO.
X2H		BRACKET, BEARING D18496 (07860)	B	EA	1									18	40
P H		LOAD SPRING, BEARING A50719 (07860)	B	EA	1				*	*	*	*	*	18	41
P H	3110-144-8882	BALL, BEARING MS17107-2 (96906)	B	EA	1				*	*	*	*	*	18	42
P H		BRACKET, BEARING D18913 (07860)	B	EA	1				*	*	*	*	*	18	43
P H	3110-056-9374	BALL, BEARING MS17107-6 (96906)	B	EA	1				*	*	*	*	*	18	44
X2H		ARMATURE, WOUND C26067 (07860)	B	EA	1									18	45
P H		SCREW, MACHINE: MAIN POLE ASSEMBLY MS35109-272 (96906)	B	EA	16				*	*	*	*	*	18	46
X2H		MAIN POLE ASSEMBLY MS36982 (07860)	B	EA	4									18	47
X2H		FRAME C26068 (07860)	B	EA	1									18	48
		GROUP 05 - KITS AND SETS													
P D		KIT, REPAIR, OIL PUMP 804588 (33525)		EA	1										
		4 EA-GASKET												4	2
		2 EA-GASKET												4	4
		2 EA-GASKET												4	6
		1 EA-SPRING												4	17
		1 EA-PIN												4	22
		1 EA-PIN												4	25
P D		KIT, O RING: OIL PUMP 804590 (33525)		EA	1										
		1 EA-SEAL												4	11
		1 EA-PACKING												4	24
		1 EA-PACKING												4	27
		1 EA-RING												4	30
P D		KIT, REPAIR: BASIC COMPRESSOR 804587 (33525)		EA	1										
		2 EA-STOP												5	6
		1 EA-STOP												5	7
		1 EA-STOP												5	8
		1 EA-STOP												5	9
		1 EA-SPRING												5	10
		1 EA-VALVE												5	11
		1 EA-VALVE												5	14
		1 EA-GASKET												5	15
		1 EA-SPRING												6	6
		1 EA-SPACER												6	7
		1 EA-SPAR												6	8

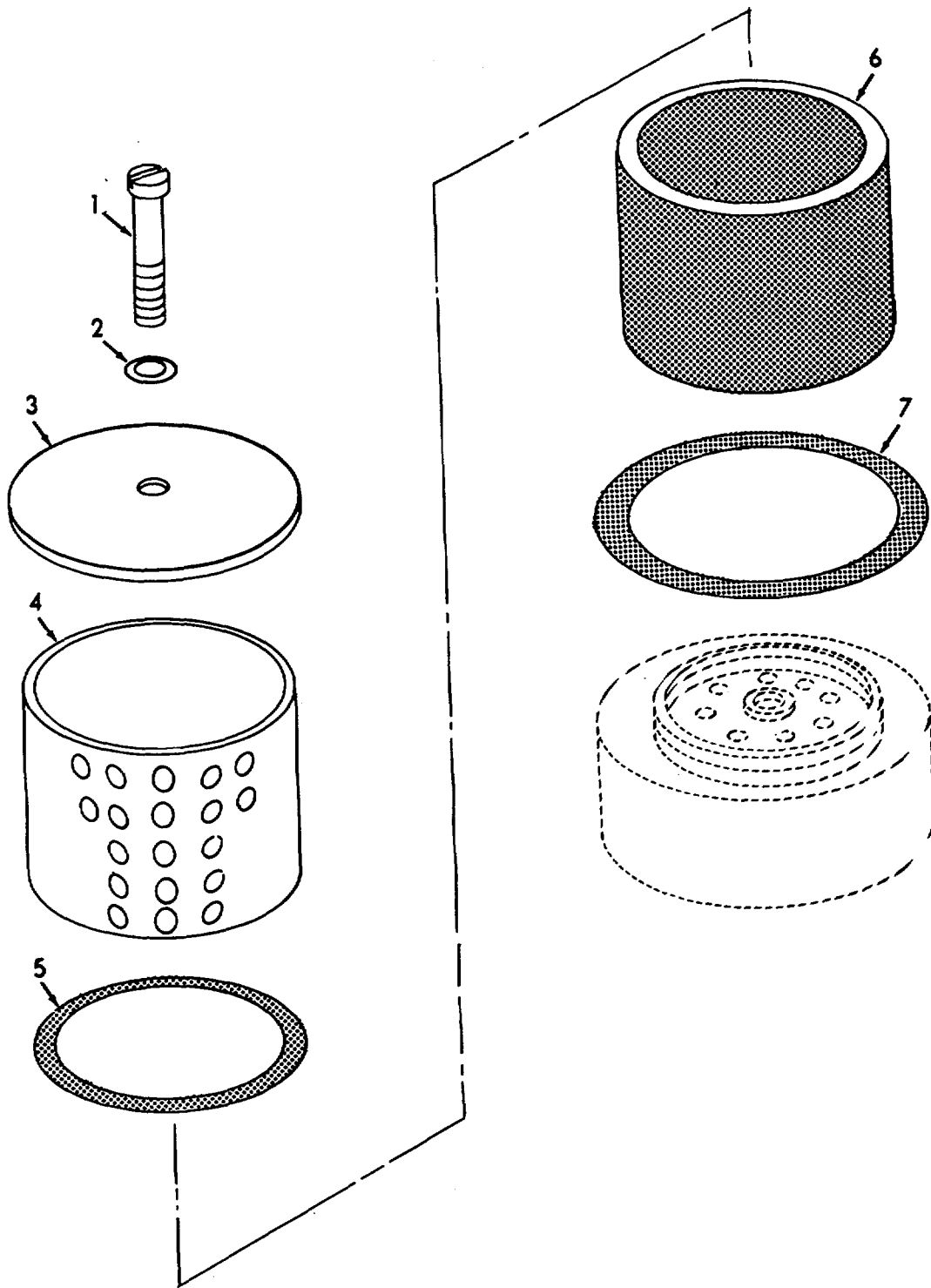
(1) SMR CODE	(2) FEDERAL STOCK NUMBER	(3) DESCRIPTION REF NUMBER & MFR CODE	USABLE ON CODE	(4) UNIT OF MEAS	(5) QTY INC IN UNIT	(6)			(7)			(8) 1-YR ALW PER 100 EQUIP CNTGY	(9) DEPOT MAINT ALW PER 100 EQUIP	(10) ILLUS- TRATION	
						30-DAY DS MAINT ALLOWANCE			30-DAY GS MAINT ALLOWANCE					(a) FIG. NO.	(b) ITEM NO.
						(a) 1-20	(b) 21-50	(c) 51-100	(a) 1-20	(b) 21-50	(c) 51-100				
		2 SPACER												6	9
		1 EA-VALVE												6	10
		1 EA-GASKET												6	15
		1 EA-VALVE												6	16
		1 EA-SPRING												6	17
		1 EA-SPACER												7	6
		1 EA-SPACER												7	7
		1 EA-SPACER												7	8
		1 EA-SPRING												7	10
		1 EA-VALVE												7	11
		1 EA-VALVE												7	15
		1 EA-SPRING												7	16
		1 EA-GASKET												7	17
		1 EA-STOP												8	5
		1 EA-SPACER												8	6
		1 EA-SPACER												8	7
		1 EA-SPACER												8	8
		1 EA-SPRING												8	9
		1 EA-VALVE												8	11
		1 EA-VALVE												8	15
		1 EA-SPRING												8	16
		1 EA-RETAINER												9	2
		1 EA-SHIM												9	6
		1 EA-SHIM												9	6
		4 EA-SHIM												9	6
		1 EA-SHIM												9	8
		1 EA-SHIM												9	8
		4 EA-SHIM												9	8
		1 EA-SHIM												9	10
		1 EA-SHIM												9	10
		4 EA-SHIM												9	10
		4 EA-RING												9	12
		3 EA-SHIM												9	14
		1 EA-SHIM												9	18
		1 EA-SHIM												9	18
		4 EA-SHIM												9	18
		4 EA-SCREW												9	20
		1 EA-BEARING												9	25
		1 EA-PACKING												9	26
		1 EA-BEARING												9	27
P D		KIT, O RING AND GASKET: COMPRESSOR 804589 (33525)		EA	1										

(1) SMR CODE	(2) FEDERAL STOCK NUMBER	(3) DESCRIPTION REF NUMBER & MFR CODE	USABLE ON CODE	(4) UNIT OF MEAS	(5) QTY INC IN UNIT	(6) 30-DAY DS MAINT ALLOWANCE			(7) 30-DAY GS MAINT ALLOWANCE			(8) 1-YR ALW PER 100 EQUIP CNTGY	(9) DEPOT MAINT ALW PER 100 EQUIP	(10) ILLUS- TRATION			
						(a) 1-20	(b) 21-50	(c) 51-100	(a) 1-20	(b) 21-50	(c) 51-100			(a) FIG. NO.	(b) ITEM NO.		
P H	4310-107-1071	1 EA-GASKET												5	12		
		1 EA-SEAL												6	12		
		1 EA-GASKET												6	13		
		1 EA-SEAL												7	12		
		1 EA-GASKET												7	13		
		1 EA-SEAL												8	12		
		1 EA-GASKET												8	13		
		1 EA-SEAL												9	3		
		1 EA-PACKING												9	4		
		1 EA-PACKING												9	7		
		1 EA-PACKING												9	9		
		1 EA-PACKING												9	11		
		1 EA-PACKING												9	19		
		1 EA-PACKING												9	26		
				KIT, REPAIR: MOISTURE SEPARATOR 804481 (33525)		EA	1				*	*	*	*	*		
				4 EA-SCREW												12	1
				4 EA-WASHER												12	2
				2 EA-SCREW												12	4
				2 EA-WASHER												12	5
				2 EA-SCREW												12	7
				2 EA-WASHER												12	8
				1 EA-PACKING												12	13
				1 EA-SPRING												12	14
				1 EA-RING												12	20
				1 EA-DISC												12	21
				1 EA-RETAINER												12	22
				1 EA-PACKING												12	24
				2 EA-SCREW												12	25
				1 EA-SEAT												12	28
				1 EA-PACKING												12	29
				1 EA- PACKING												12	30
				1 EA-RING												12	31
		1 EA-LOCKNUT												12	32		



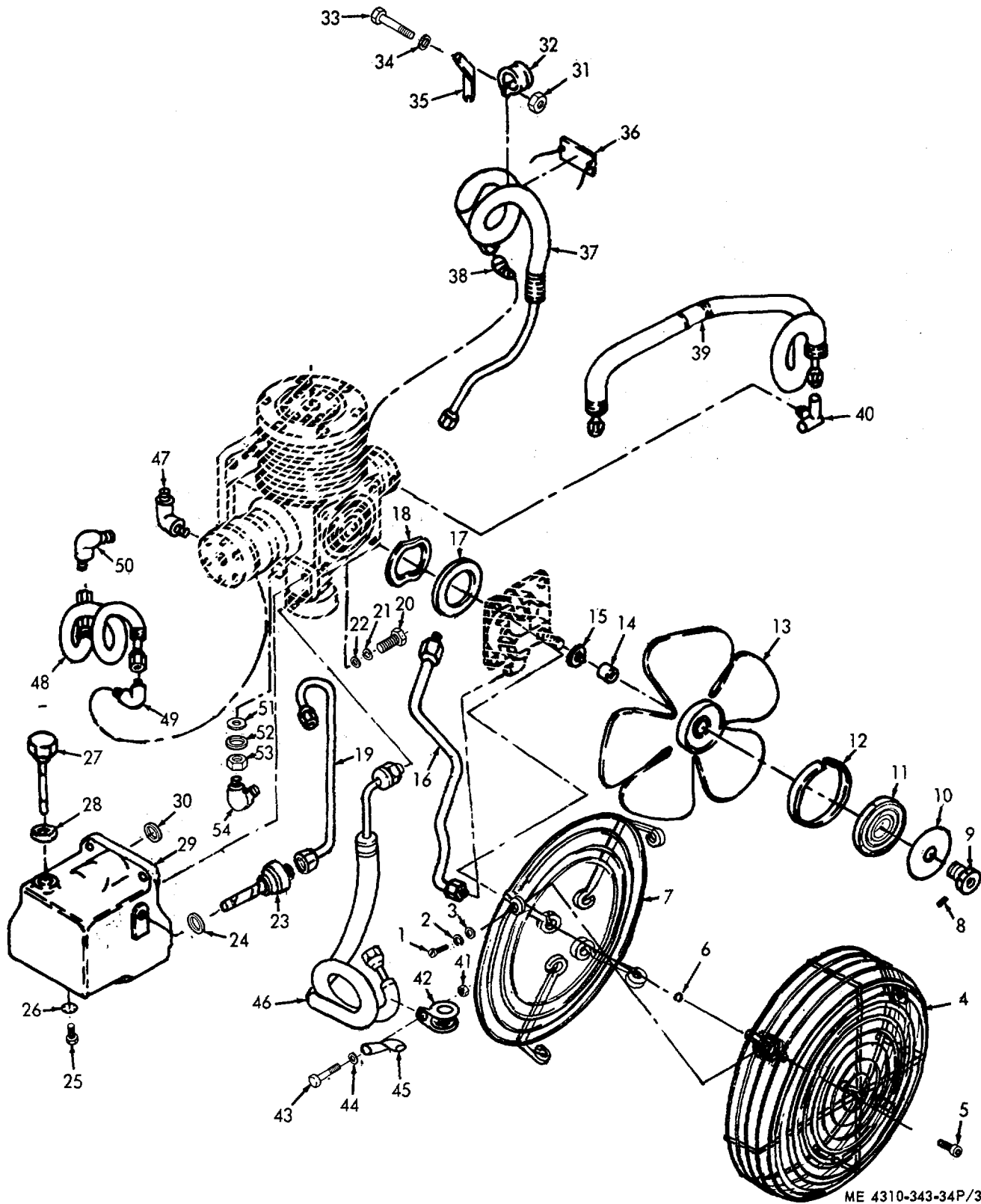
ME 4310-343-34P/1

Figure 1. Compressor



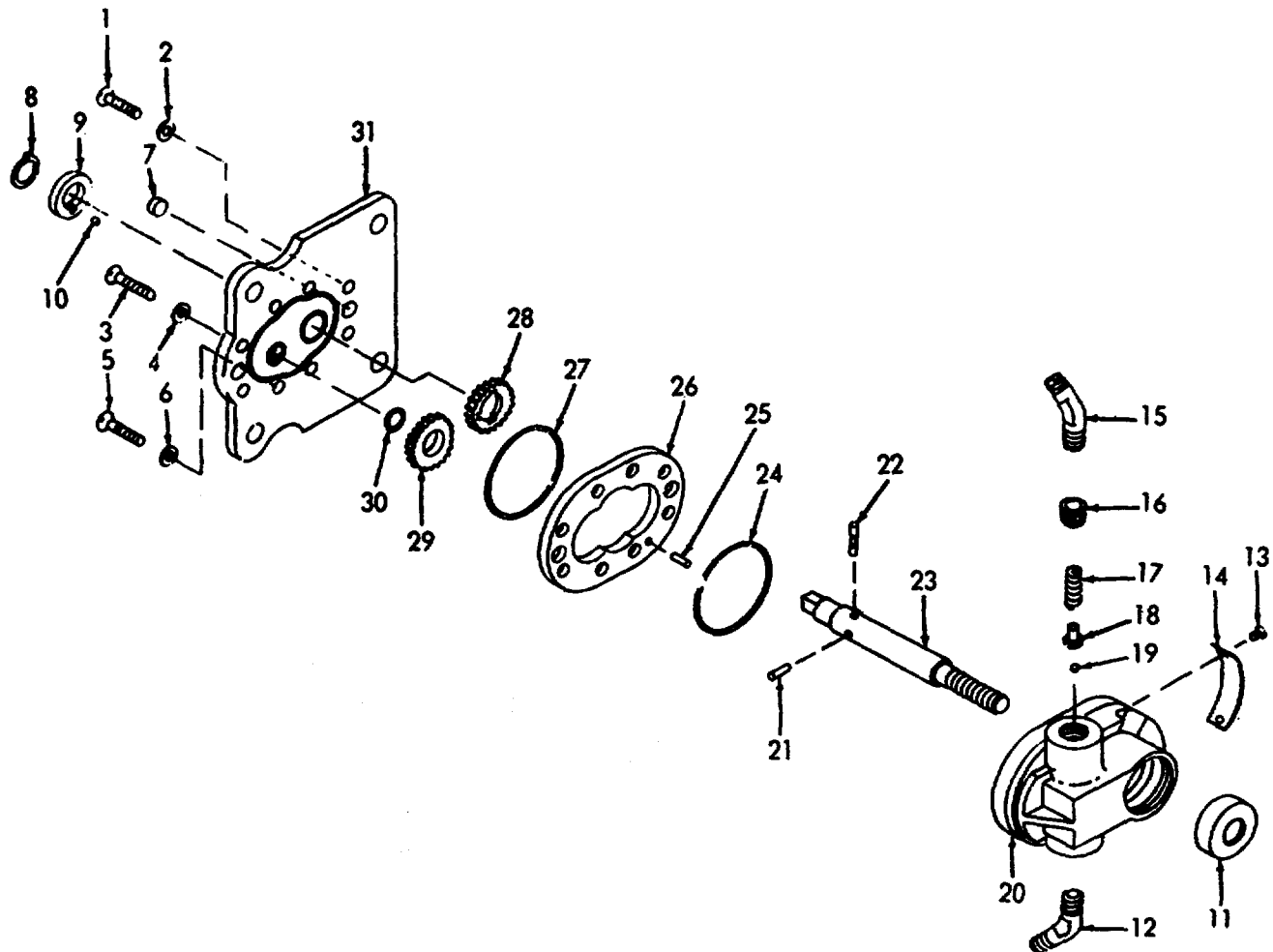
ME 4310-343-34P/2

Figure 2. Air Inlet Filter



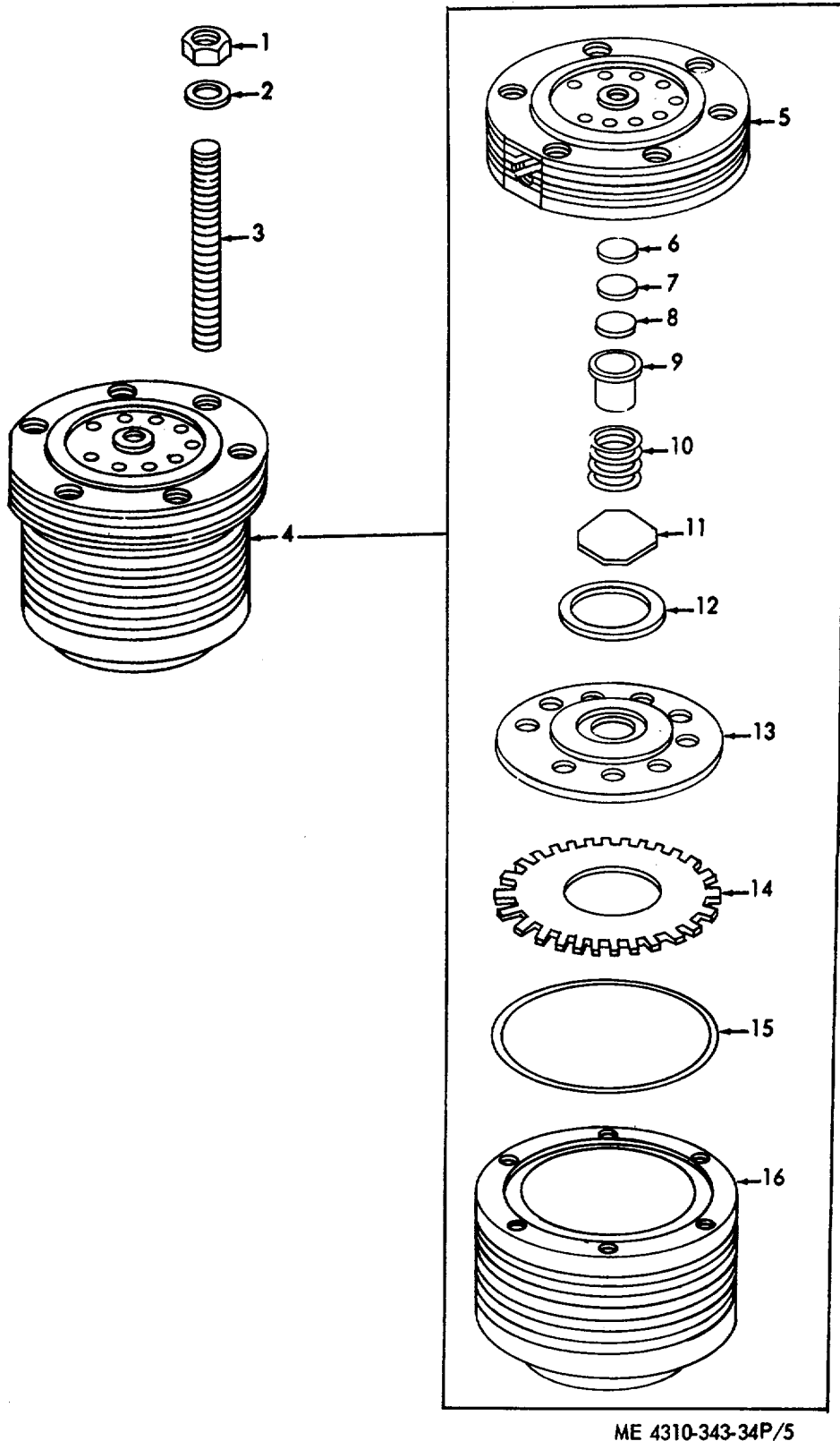
ME 4310-343-34P/3

Figure 3. Compressor Lines, Fittings 2nd Fan



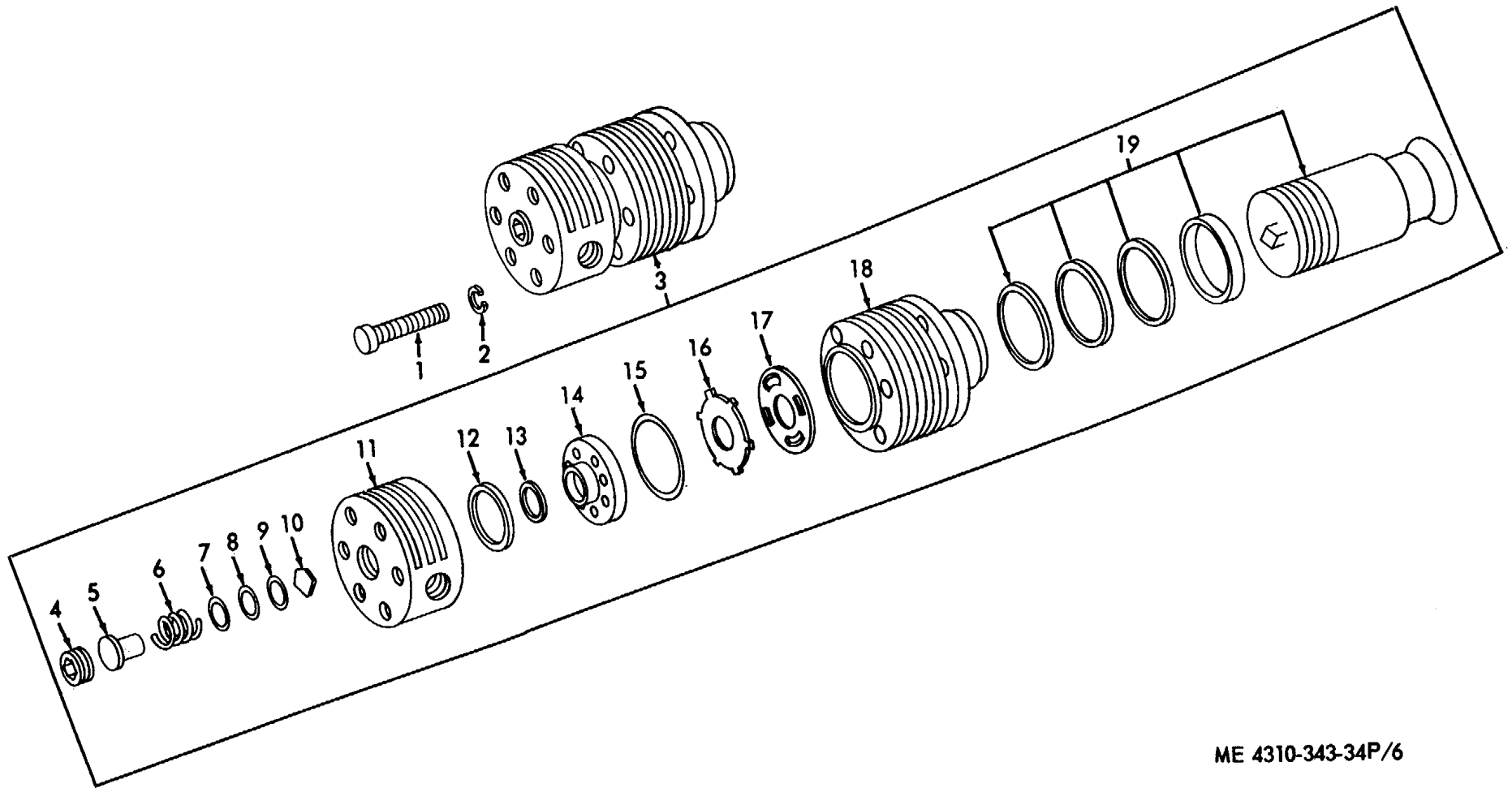
ME 4310343-34P/4

Figure 4. Oil Pump



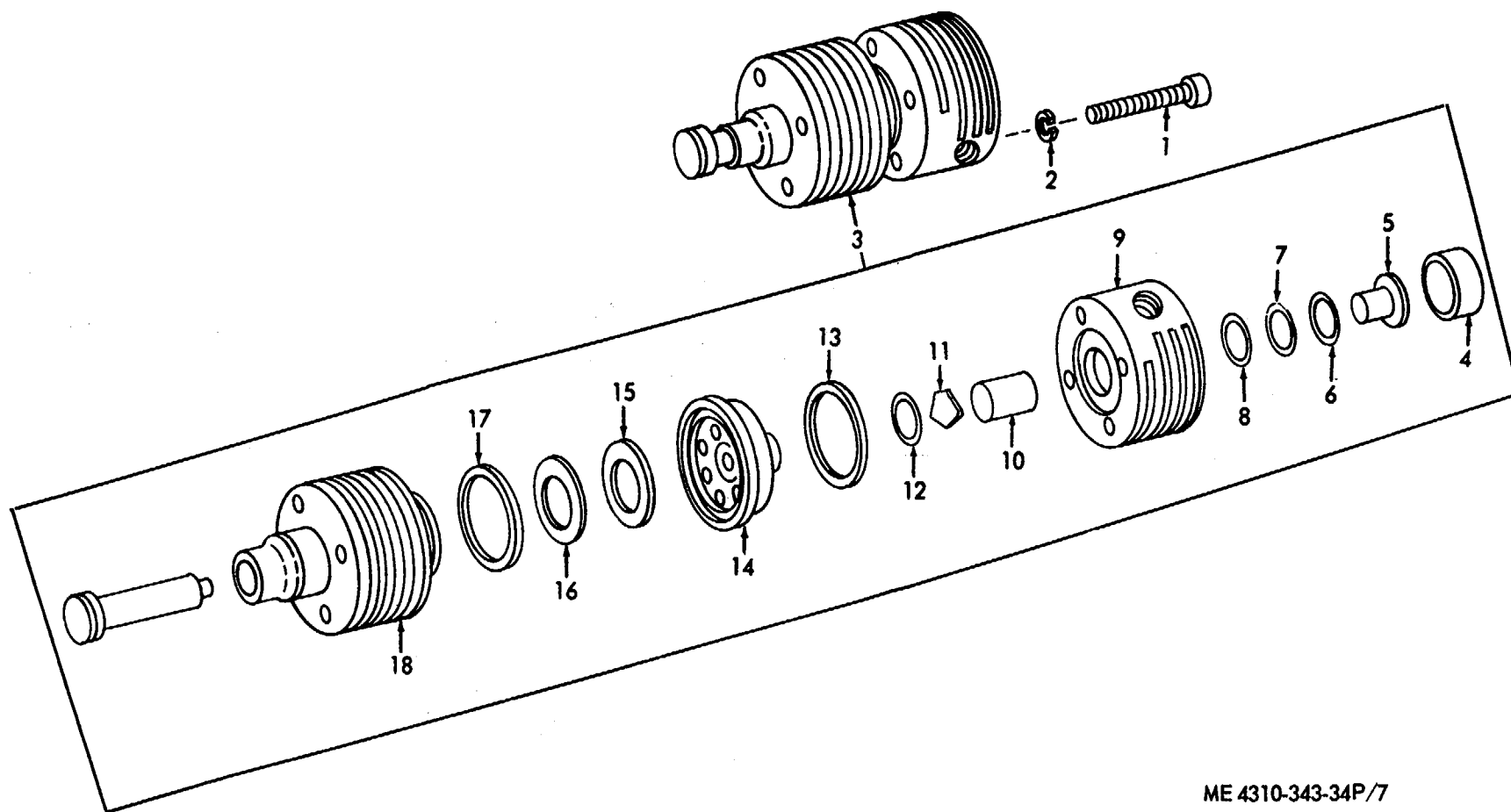
ME 4310-343-34P/5

Figure 5. 1st Stage



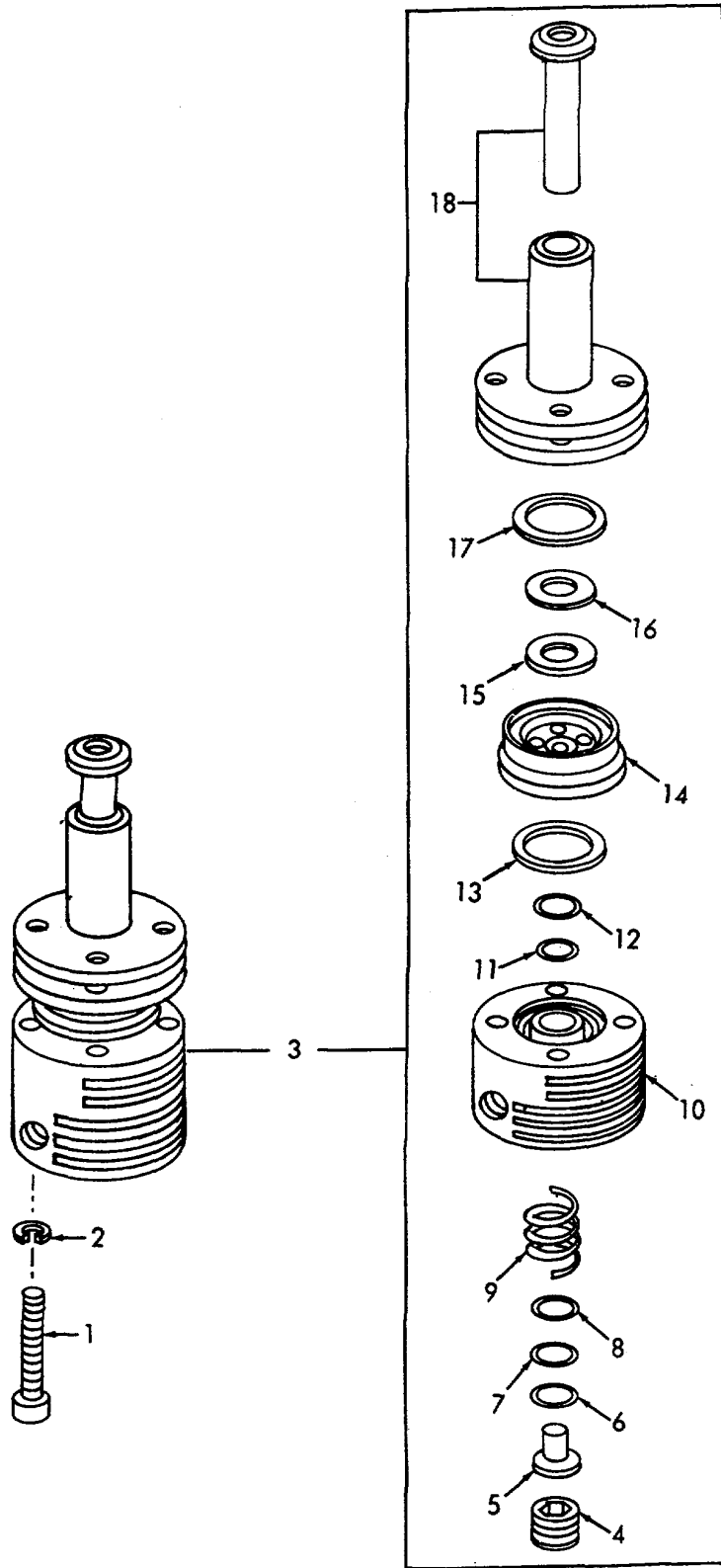
ME 4310-343-34P/6

Figure 6. 2nd Stage



ME 4310-343-34P/7

Figure 7. 3rd Stage



ME 4310-343-34P/8

Figure 8. 4th Stage

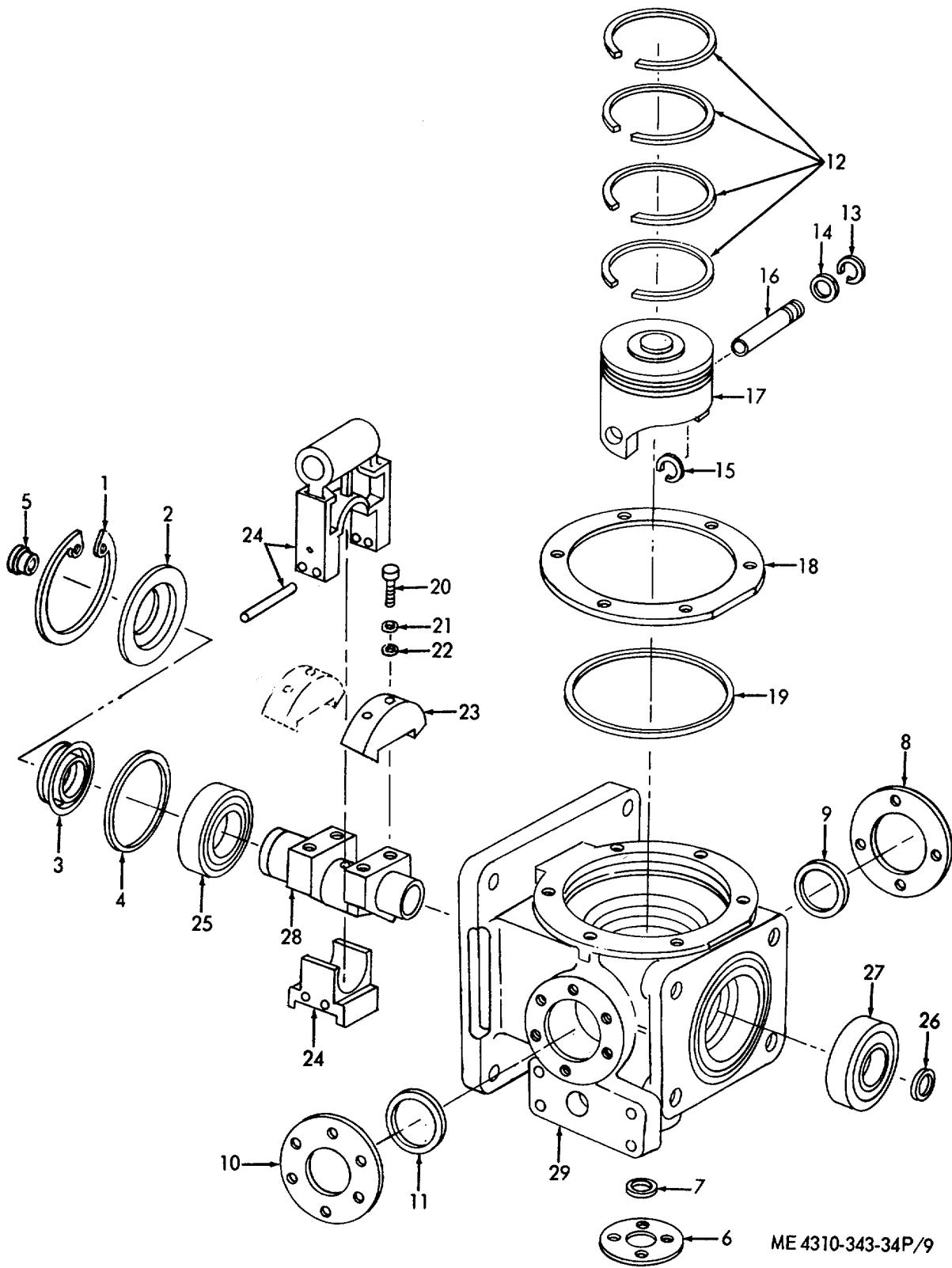
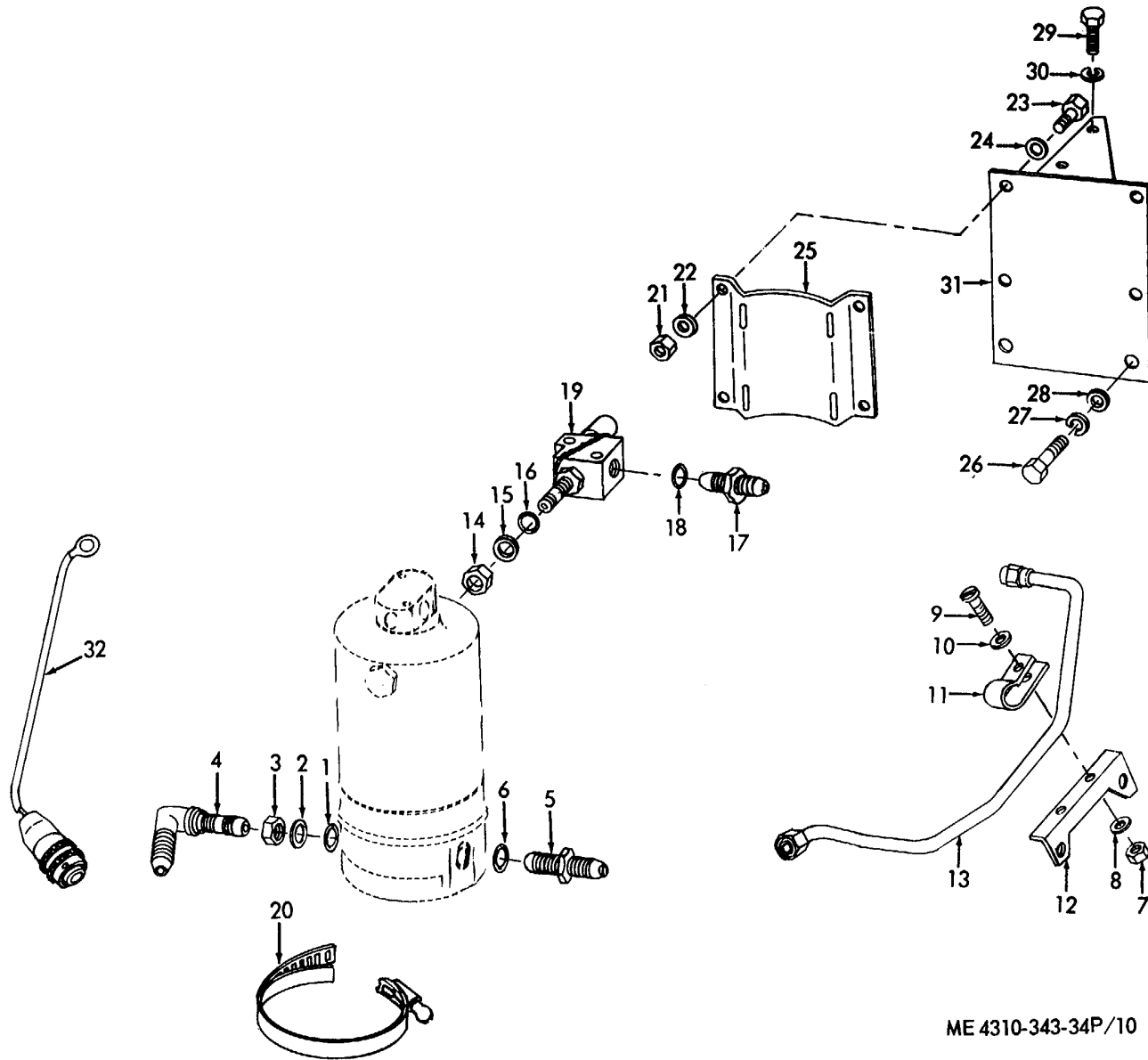
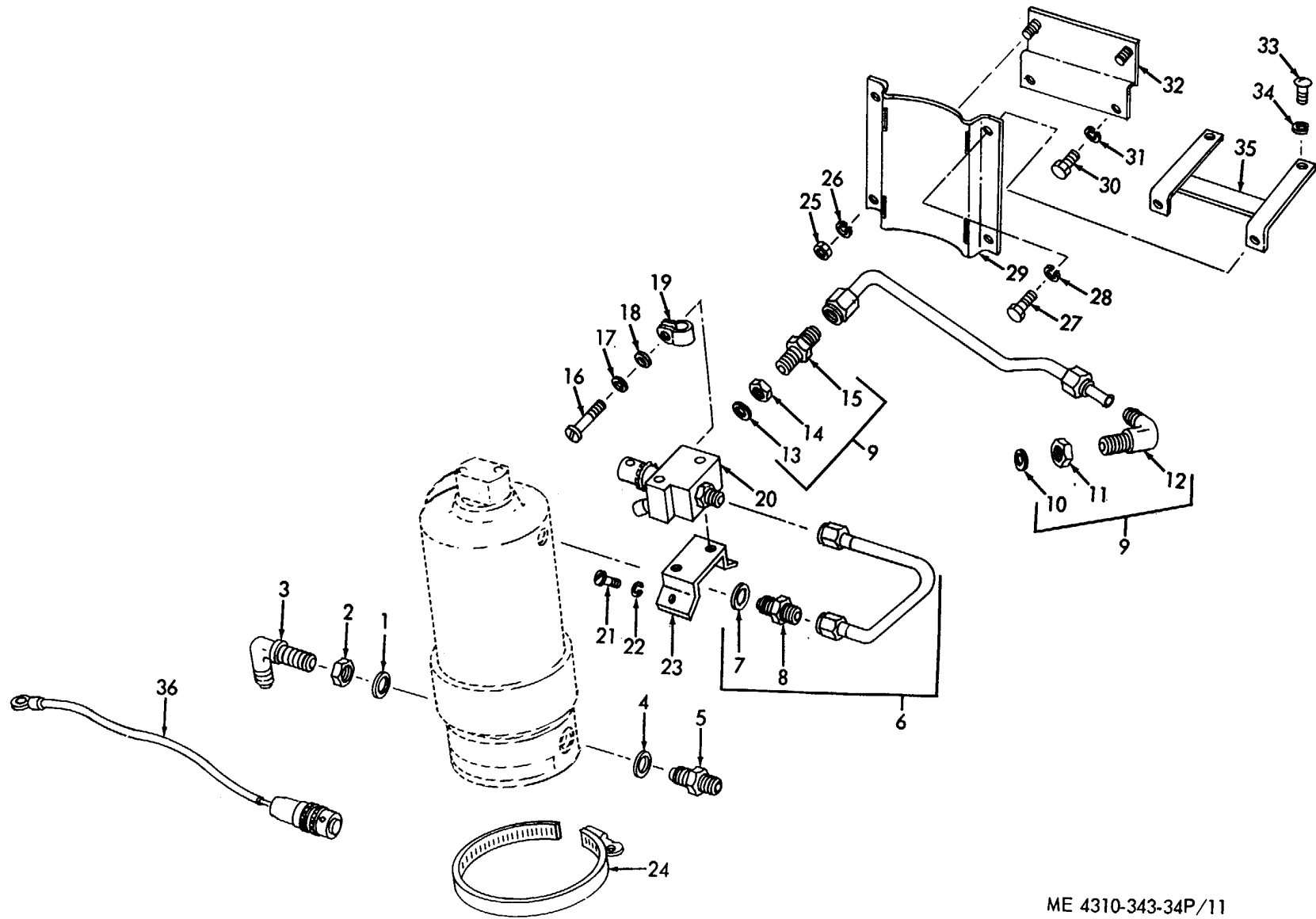


Figure 9. Compressor Components



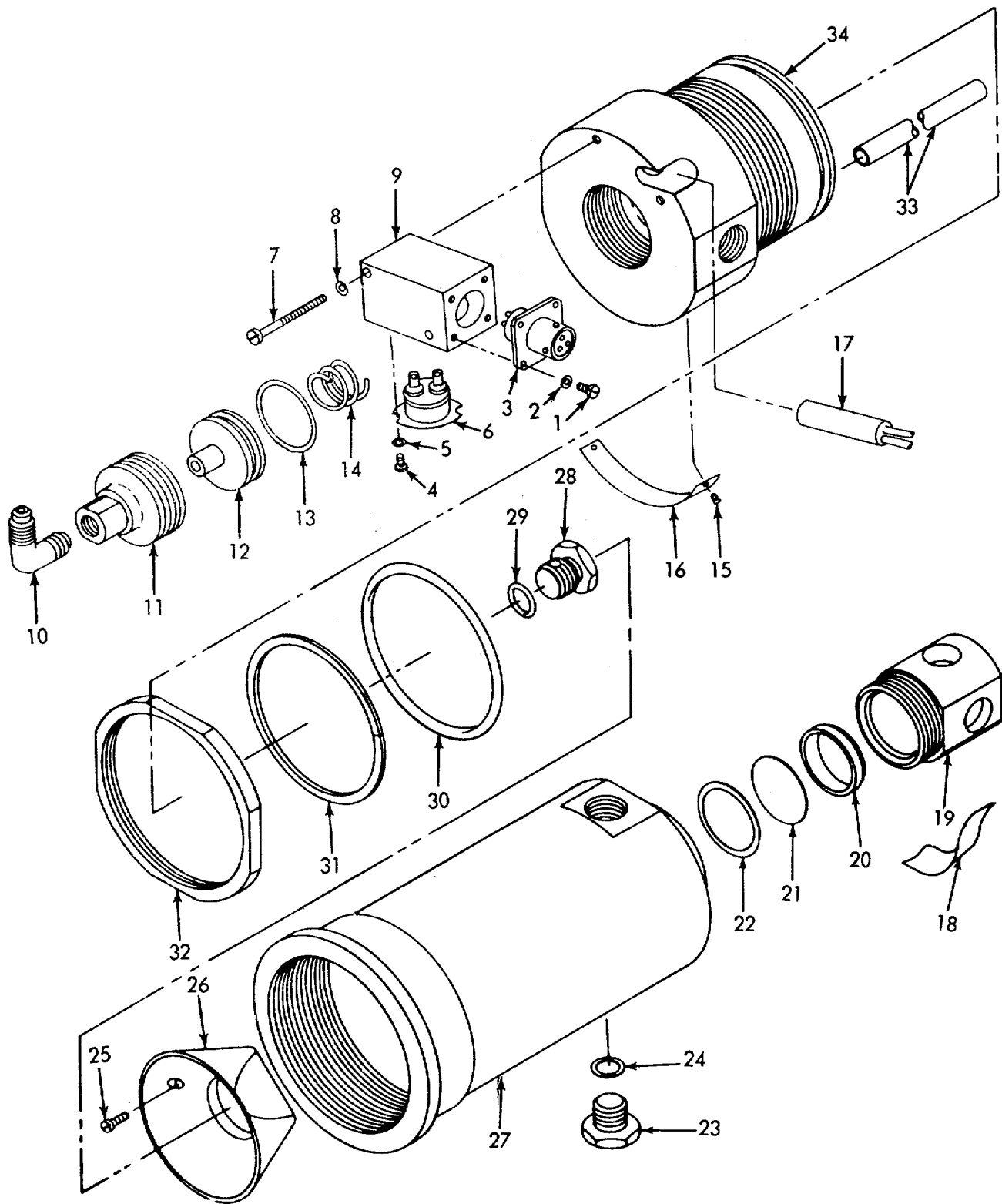
ME 4310-343-34P/10

Figure 10. Moisture Separator and Valve (A)



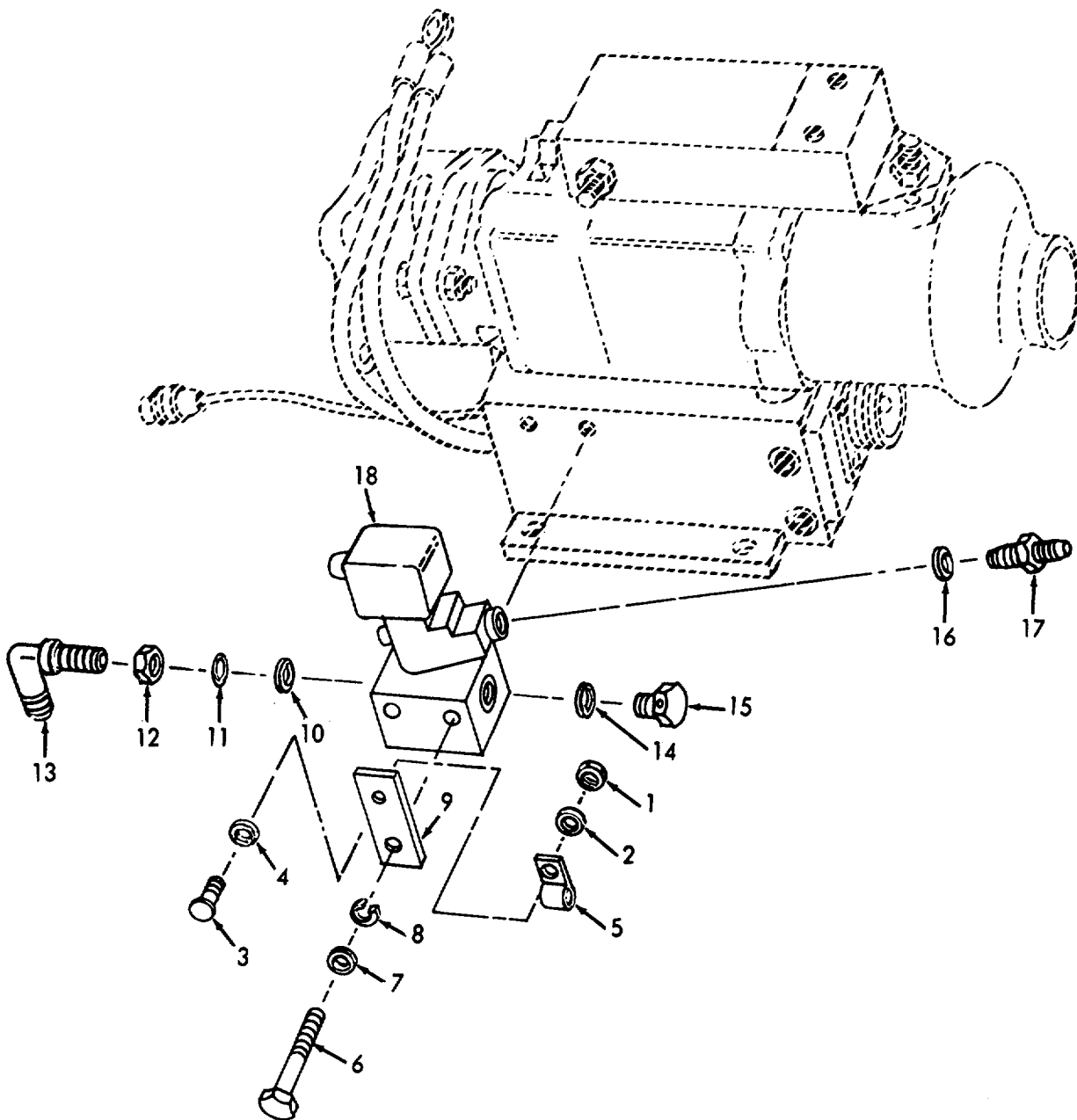
ME 4310-343-34P/11

Figure 11. Moisture Separator and Valve (B)



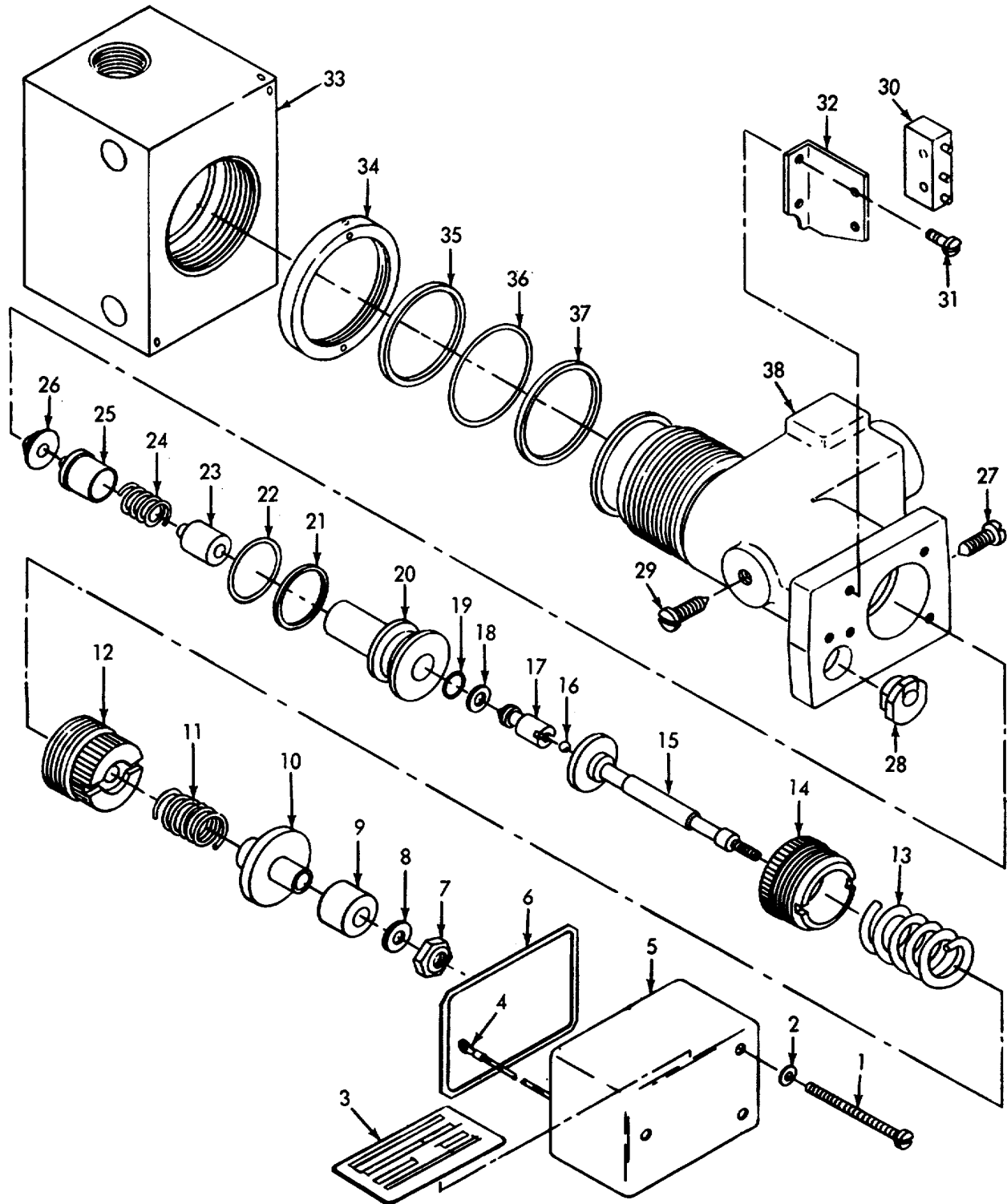
ME 4310-343-34P/12

Figure 12. Moisture Separator Components



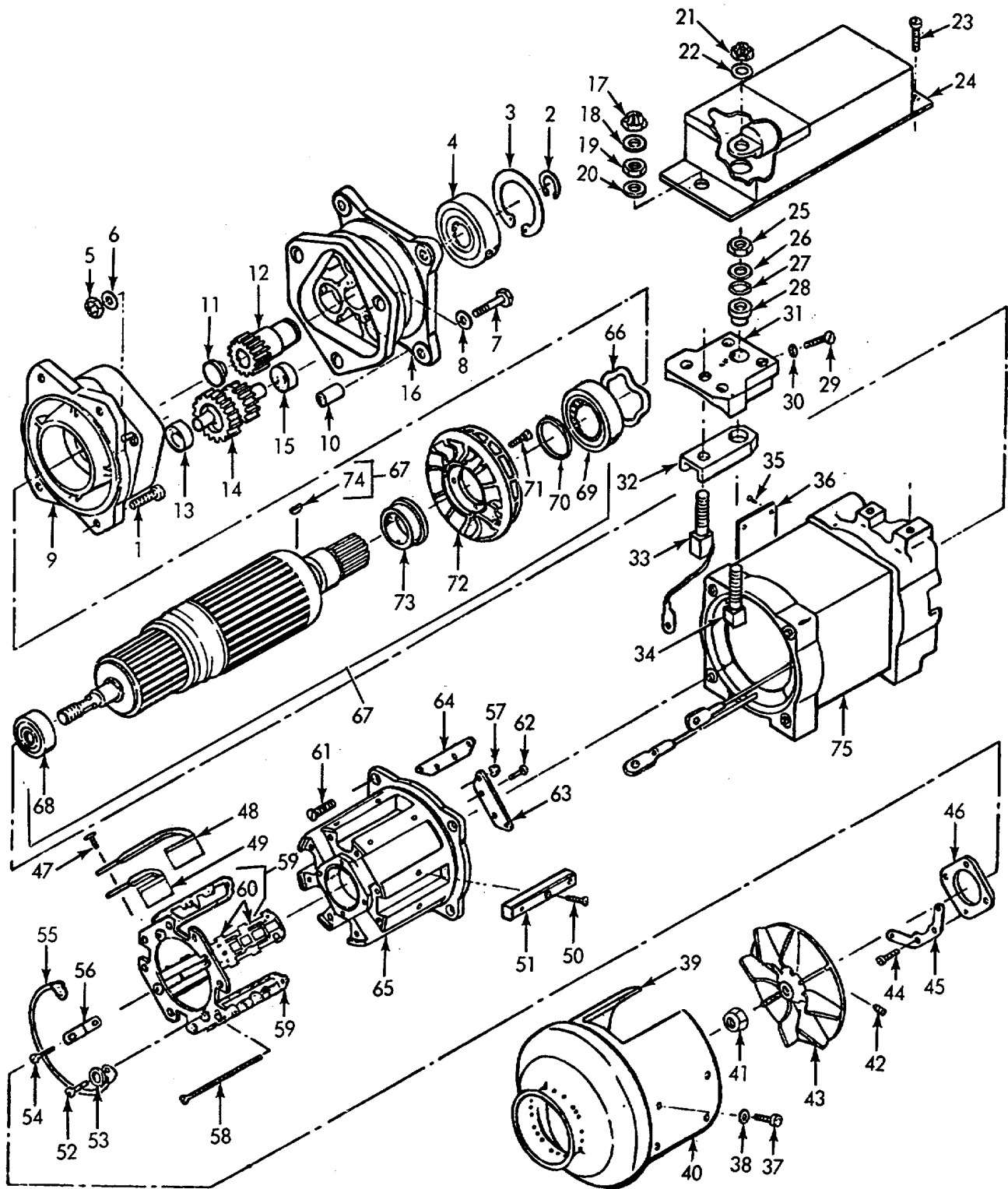
ME 4310-343-34P/13

Figure 13. Pressure Switch



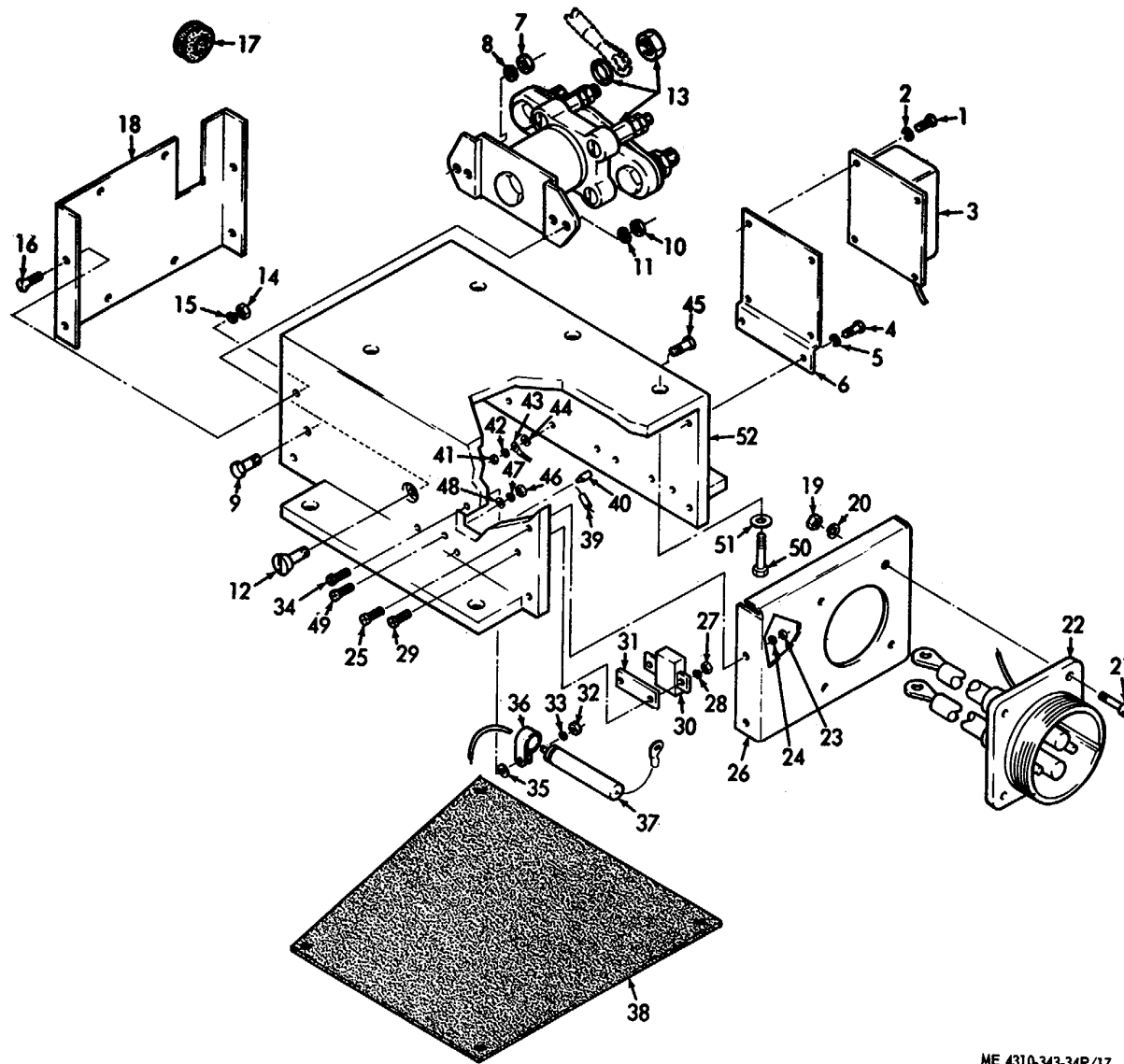
ME 4310-343-34P/14

Figure 14. Pressure Switch Components



ME 4310-343-34P/16

Figure 16. Electric Motor Components (A)



ME 4310-343-34P/17

Figure 17. Electric Motor and Related Parts (B)

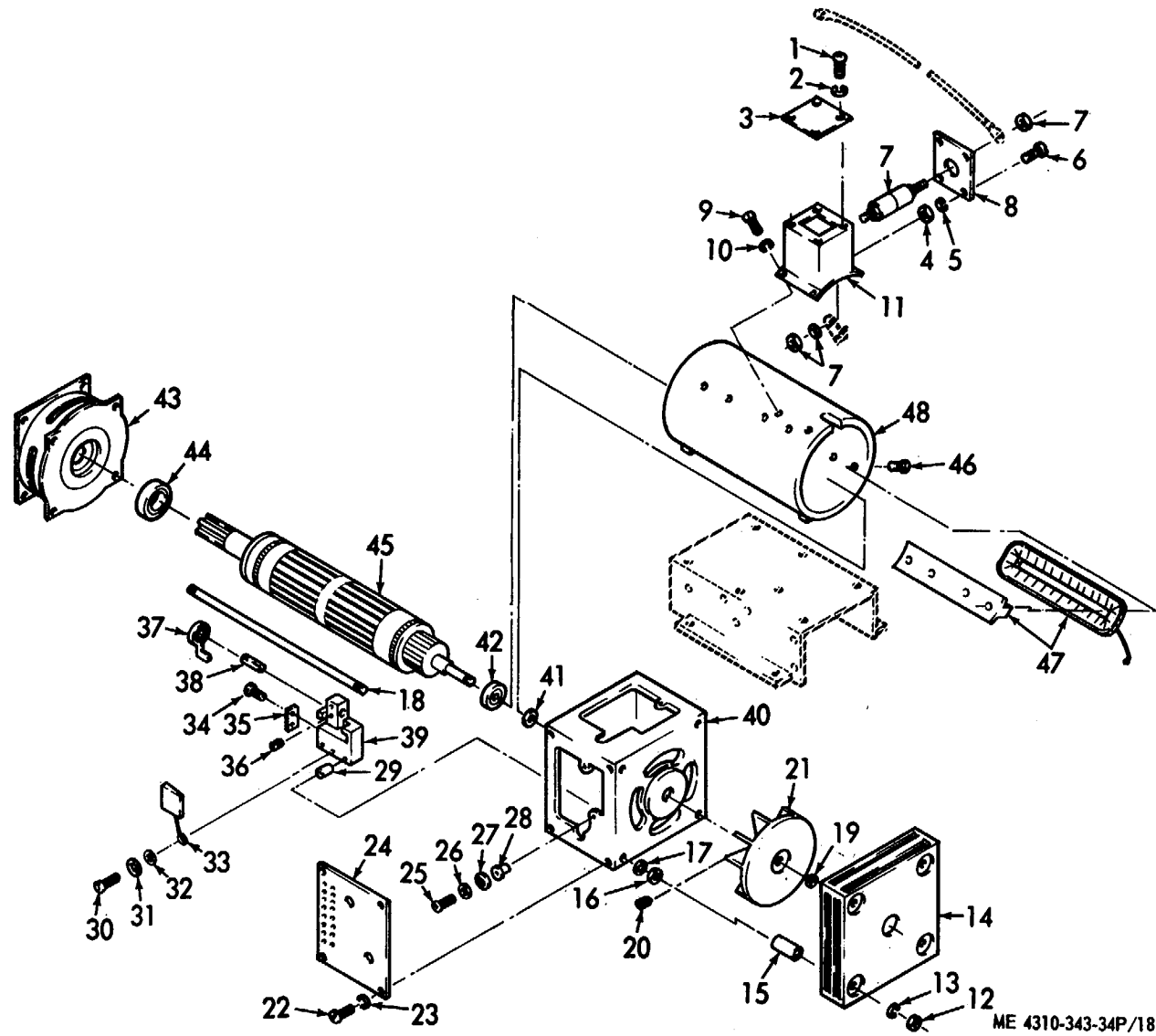


Figure 18. Electric Motor Components

**Section IV. INDEX FEDERAL STOCK NUMBER AND REFERENCE NUMBER
CROSS-REFERENCE TO FIGURE AND ITEM NUMBER**

<u>STOCK NUMBER</u>	<u>FIGURE NO.</u>	<u>ITEM NO.</u>	<u>STOCK NUMBER</u>	<u>FIGURE NO.</u>	<u>ITEM NO.</u>
1040-403-5649	3	47	5305-498-2405	15	8
	3	50	5305-514-7506	16	62
1040-408-2354	3	23	5305-531-0137	18	36
1040-408-2362	3	30	5305-531-0298	16	71
1040-408-2363	6	18	5305-543-2752	10	29
1040-408-2364	5	5	5305-559-8145	16	23
1040-408-2366	5	16	5305-582-5807	16	37
1040-408-2373	9	16	5305-653-2535	2	1
1650-073-5936	9	21	5305-695-7205	16	54
1650-337-5273	8	4	5305-722-7409	16	1
1650-546-3426	6	14	5305-724-6738	18	20
1650-546-3427	8	14	5305-740-2816	16	52
1650-546-3429	9	2	5305-889-3000	17	4
1650-546-3430	9	23		17	16
1650-546-3434	8	10		17	21
1650-546-3435	7	9		17	25
1650-547-0397	7	14	5305-889-9300	17	34
1650-561-5437	6	11	5305-943-8431	3	1
1650-605-0252	3	10	5305-957-2639	16	61
1650-699-0522	3	40	5305-958-5246	17	12
1650-706-1863	9	24	5305-958-5450	16	29
1650-826-7916	6	19	5305-983-6730	17	29
1650-922-9581	14	11	5305-984-4988	17	1
1650-922-9582	14	13		18	6
1650-922-9583	14	24		18	22
1650-922-9587	14	23		18	30
1650-922-9591	14	17	5305-990-6444	11	21
1650-953-0842	6	5		11	33
	7	5		18	9
1650-690-7688	3	48	5305-995-3441	11	16
2995-237-5653	15	39	5305-995-3442	11	16
3110-056-9374	18	44	5306-151-1423	16	7
1330-144-8882	18	42	5306-225-5908	1	3
3110-183-9175	14	16	5310-045-3296	3	21
5310-032-5193	15	38		7	2
4310-107-1068	12	17		8	2
4310-360-1645	4			9	22
4310-403-4667	1	9		11	17
4310-420-8771	10	19		11	22
4310-420-8772	3	46		11	34
4310-421-1477	3	37		15	9
4310-435-2405	3	39		15	34
4310-513-8299	2	3		18	10
4310-605-0259	2	6	5310-045-3299	3	2
4310-626-7095	9	1		6	2
4440-781-4326	12	19		17	42
4730-186-9961	3	49	5310-045-4007	17	2
	12	10		17	5
4730-203-0711	12	23		17	15
4730-277-6371	3	53		17	20
	10	3		17	24
4730-278-9112	10	20		17	33
4730-279-0119	11	3		17	47
4730-331-4950	3	38		18	5
4730-402-4404	10	4		18	23
4730-605-0281	2	4		18	31
4730-677-6418	3	54	5310-088-0553	1	1
4730-684-7310	11	2		1	5
4730-875-8263	13	13	5310-141-1795	3	6
4730-875-8264	10	5		10	22
	10	17		10	24
	13	17		10	28
4730-928-3483	11	5		13	8
5305-059-4553	16	50		16	6
5305-068-0500	11	27		16	8
5305-068-0501	11	30	5310-167-0704	16	18
5305-182-9324	15	22		16	20
5305-225-8499	1	7		16	22
5305-228-3927	3	5		16	26
5305-253-5606	4	13	5310-167-0816	15	15
	16	35		15	17
5305-253-5607	15	12		15	29
5305-269-3208	17	50		15	31
5305-281-6390	16	47	5310-167-0818	15	10
5305-292-7785	16	42	5310-167-0820	1	2
5305-331-5256	6	4		1	6
	7	4	5310-167-0821	15	26
5305-400-5720	3	33		15	44
	3	43	5310-167-0832	15	2
5305-168-4291	7	1		15	5
5305-468-4293	6	1	5310-167-0834	3	22
				15	21

**Section IV. INDEX FEDERAL STOCK NUMBER AND REFERENCE NUMBER
CROSS-REFERENCE TO FIGURE AND ITEM NUMBER**

<u>STOCK NUMBER</u>	<u>FIGURE NO.</u>	<u>ITEM NO.</u>	<u>STOCK NUMBER</u>	<u>FIGURE NO.</u>	<u>ITEM NO.</u>
	15	23			
	15	35			
5310-167-0836	1	4			
	1	8			
5310-188-7721	16	38			
5310-331-5257	3	9			
5310-407-9566	1	2			
	1	6			
5310-453-6187	10	14			
	13	12			
5310-468-4290	5	2			
5310-515-8058	3	34			
	3	44			
	10	8			
	10	10			
	10	30			
	13	2			
	13	4			
5310-543-2410	17	28			
	18	2			
	18	17			
5310-550-0284	16	30			
5310-582-5965	10	27			
	11	26			
	11	28			
	11	31			
	13	7			
	17	8			
	17	11			
	18	13			
5310-595-6772	2	2			
5310-596-9409	16	53			
5310-637-2216	3	15			
5310-637-9541	15	25			
	15	43			
	17	51			
5310-680-5110	3	14			
5310-687-6705	16	19			
	16	25			
5330-805-2966	10	18			
	11	1			
	11	4			
	13	10			
	13	14			
	13	16			
5330-833-7491	3	28			
5330-835-8974	14	36			
5330-932-5640	3	52			
	10	2			
	10	15			
	13	11			
5340-255-5606	15	18			
5340-263-5869	4	8			
5340-420-5783	13	15			
5340-531-6992	3	12			
5340-726-9317	3	32			
	3	42			
5340-912-7324	10	11			
	13	5			
5360-328-3690	3	11			
5365-287-0094	3	25			
5905-442-5194	15	41			
5905-828-3421	17	39			
5930-042-5197	13	18			
5930-404-7433	14	30			
5930-501-1590	12	6			
5935-835-4337	17	22			
5935-893-7373	11	36			
5935-964-5470	12	3			
5945-660-9315	17	13			
5961-880-2958	17	43			
5977-754-8046	16	48			
5995-409-4150	10	32			
6105-212-5841	15	48			
6105-432-1579	18				

**Section IV. INDEX FEDERAL STOCK NUMBER AND REFERENCE NUMBER
CROSS-REFERENCE TO FIGURE AND ITEM NUMBER**

<u>REFERENCE NO.</u>	<u>MFG CODE</u>	<u>FIG NO.</u>	<u>ITEM NO.</u>	<u>REFERENCE NO.</u>	<u>MFG CODE</u>	<u>FIG NO.</u>	<u>ITEM NO.</u>
AN500AD-20	88044	14	1	AN960B616	88044	16	20
AN364-632A	88044	16	57		88044	16	22
AN365-428	88044	16	5		88044	16	26
AN4-11A	88044	16	7	AN960PD6	88044	16	38
AN500AD3-4	88044	12	1	A2867	72121	16	51
	88044	12	4	A4032	72121	16	32
	88044	14	31	A4044	72121	16	46
AN500AD6-17	88044	12	7	A4125	72121	16	34
AN500A6-6	88044	16	37	A4820	72121	16	55
AN501A416-14	88044	16	1	A49881	07860	11	24
AN505-6-46	88044	16	58	A49882	07860	11	23
AN505C8R7	88044	4	3	A49886	07860	18	24
AN505C8R8	33525	4	5	A49890	07860	17	6
AN50568519	88044	4	1	A49962	07860	18	33
AN565DC8H4	88044	16	42	A49967	07860	18	37
AN6289D4	88044	3	53	A49985	07860	18	35
	88044	10	3	A49986	07860	18	38
AN6289J4	88044	10	14	A49998-1	07860	18	29
	88044	13	12	A49998-2	07860	18	29
AN6290-4	88044	3	26	A50109	07860	17	3
	88044	3	51	A50116	07860	17	31
	88044	10	1	A50170	07860	18	3
	88044	10	6	A50719	07860	18	41
	88044	10	16	A50720	07860	17	40
	88044	10	18	A50722-1	07860	17	49
	88044	13	10	A50722-2	07860	17	45
	88044	13	14	A5124	72121	16	56
	88044	13	16	A5387	72121	16	43
AN6290-5	88044	3	28	A5561	72121	16	63
AN806-4K	88044	13	15	A5562	72121	16	64
AN814-4D	88044	3	25	A5623	72121	16	9
AN814-4J	88044	13	15		72121	16	10
AN815-4J	88044	10	5	A5889	72121	16	39
	88044	10	17	A5902	72121	16	11
	88044	13	17	A5903	72121	16	70
AN815-4K	88044	11	5	A5904	72121	16	73
	88044	11	8	A5605	72121	16	28
AN823-4	88044	4	12	A5907	72121	16	49
AN823-5	33525	4	15	A5914	72121	16	27
AN832-4C	88044	11	15	A5915	72121	16	48
AN833-4C	88044	11	3	A5974	72121	16	33
	88044	11	12	A6711	72121	16	36
AN833-4D	88044	10	4	A7L173	72121	16	45
AN833-4J	88044	13	13	A7043	72121	16	44
AN924-4C	88044	11	2	A8785-166	07860	18	18
	88044	11	11	A9510-1	72121	16	
	88044	11	14	B2257	72121	16	60
AN960-10	88044	15	10	B2289	72121	16	72
AN960-10L	88044	3	22	B2455	72121	16	
	88044	15	21	B2456-1	72121	16	14
	88044	15	23	B2457	72121	16	12
AN960-3	88044	15	35	B2458	72121	16	31
	88044	12	2	B2459	72121	16	59
	88044	12	5	B26377-4	07860	18	28
AN960-416	88044	3	6	B27492-4	07860	18	27
	88044	10	22	B36707	07860	17	26
	88044	10	24	B36708	07860	17	18
	88044	10	28	B36925	07860	11	6
	88044	13	8	B36936	07860	18	39
	88044	16	6	B36937	07860	18	
	88044	16	8	B36982	07860	18	47
AN960-516	88044	1	4	B36864	07860	18	11
	88044	1	6	B37243	07860	11	35
AN960-516L	88044	1	6	B37244	97860	11	32
	88044	1	8	B37388	07860	18	7
AN960-6	88044	12	8	B37604	07860	18	14
	88044	15	15	B37820	07860	18	8
	88044	15	17	C1419	72121	16	16
	88044	15	29	C1556	72121	16	67
	88044	15	31	C1558	72121	16	40
AN960-6L	88044	15	2	C1563	72121	16	75
	88044	15	5	C1564	72121	16	
AN960-616	88044	15	26	C26017	07860	11	9
	88044	15	44	C26065	07860	18	21
AN960-8	88044	3	34	C26067	07860	18	45
	88044	3	44	C26068	07860	18	48
	88044	10	8	C921	72121	16	65
	88044	10	10	D18464-2	07860	17	52
	88044	10	30	D18496	07860	18	40
	88044	13	2	D18913	07860	18	43
	88044	13	4	D647	72121	15	48
AN960B616	88044	16	18	ES960B8	72121	16	53

**Section IV. INDEX FEDERAL STOCK NUMBER AND REFERENCE NUMBER
CROSS-REFERENCE TO FIGURE AND ITEM NUMBER**

<u>REFERENCE NO.</u>	<u>MFG CODE</u>	<u>FIG NO.</u>	<u>ITEM NO.</u>	<u>REFERENCE NO.</u>	<u>MFG CODE</u>	<u>FIG NO.</u>	<u>ITEM NO.</u>
HP8N	09922	11	19	MS35265-45	96906	10	29
IN4003	02735	17	43	MS35275-245	96906	3	1
MS11DA4-1	07860	18		MS35291-14	96906	13	6
MS15795-105	96906	18	26	MS35291-6	96906	17	9
	96906	18	32	MS35336-9	96906	15	30
MS15795-741	96906	18	26	MS35338-40	96906	17	28
MS15795-808	96906	2	2		96906	18	2
MS16624-37	96906	4	8		96906	18	17
MS17107-2	96906	18	42	MS35338-41	96906	17	2
MS17107-6	96906	18	44		96906	17	5
MS20822-4C	96906	3	38		96906	17	15
MS20822-4D	96906	3	49		96906	17	24
	96906	12	10		96906	17	33
MS21043L3	96906	5	1		96906	17	47
MS21044N5	96906	1	1		96906	18	5
	96906	1	5		96906	18	23
MS21083D08	96906	3	31		96906	18	31
	96906	3	41	MS35338-42	96906	3	2
MS21083N6	96906	16	17		96906	6	2
	96906	16	21		96906	17	42
	96906	16	41	MS35338-43	96906	3	21
	96906	18	19		96906	7	2
MS21318-7	96906	4	13		96906	8	2
	96906	16	35		96906	9	22
MS21318-8	96906	15	12		96906	11	17
MS21919DG9	96906	3	32		96906	11	22
	96906	3	42		96906	11	34
MS24171D1	96906	17	13		96906	15	9
MS25036-4	96906	14	4		96906	15	34
MS25036-49	96906	15	40		96906	18	10
MS25082B6	96906	16	19	MS35338-44	96906	10	27
	96906	16	25		96906	11	26
MS27183-5	96906	17	35		96906	11	28
	96906	17	48		96906	11	31
MS27183-7	96906	17	44		96906	13	7
MS27183-8	96906	11	18		96906	17	8
MS28778-4	96906	11	1		96906	17	11
	96906	11	4		96906	18	13
	96906	11	7	MS35338-45	96906	1	2
	96906	11	10		96906	1	6
	96906	11	13	MS35338-46	96906	15	25
MS29561-111	96906	14	22		96906	15	43
MS29561-112	96906	9	7		96906	17	51
MS29561-117	96906	9	9	MS35489-17	96906	17	17
MS29561-119	96906	14	36	MS35649-242	96906	17	27
MS29561-124	96906	9	11	MS35649-262	96906	17	14
MS29561-137	96906	9	4		96906	17	19
MS29561-212	96906	12	13		96906	17	23
MS29561-228	96906	12	30		96906	17	32
MS29561-232	96906	9	19		96906	17	46
MS3102R32-1P	96906	17	22		96906	18	4
MS1132E8-3P	96906	12	3	MS35649-282	96906	17	41
MS3116P8-3S	96906	11	36	MS35691-1	96906	18	16
MS35043-87	96906	17	39	MS35738-41	96906	17	20
MS35109-272	96906	18	46	MS51021-21	96906	18	36
MS35190-238	96906	16	50	MS51965-54	96906	18	20
MS35190-240	96906	16	29	MS51967-2	96906	11	25
MS35190-289	96906	17	12		96906	17	7
MS35191-290	96906	16	61		96906	17	10
MS35206-218	96906	17	29		96906	18	12
MS35206-228	96906	17	1	MS51967-5	96906	1	1
	96906	18	6		96906	1	5
	96906	18	22	MS90725-3	96906	11	27
	96906	18	30	MS90725-34	96906	1	7
MS35206-230	96906	17	4	MS90725-36	96906	1	3
	96906	17	16	MS90725-5	96906	11	30
	96906	17	21	MS90725-58	96906	17	50
	96906	17	25	MS9135-01	96906	15	39
MS35206-231	96906	17	34	MS9321-08	96906	3	3
MS35207-261	96906	11	21	MS9484-04	96906	3	52
	96906	11	33		96906	10	2
	96906	18	9		96906	10	15
MS35207-268	96906	11	16		96906	13	11
MS35207-269	96906	11	16	RMLHTM2860-62W	13257	14	7
MS35219-45	96906	18	25	1OZ	43991	16	66
MS35223-13	96906	18	1	1122-0202	33525	12	15
MS35229-120	96906	18	25	1264-1708	33525	10	26
MS35241-20	96906	18	34	1264-1710	33525	10	23
MS35265-15	96906	16	71	1264-1736	33525	13	6
MS35265-26	96906	16	62	1264-2120	33525	1	3
MS35265-42	96906	16	23	1264-2122	33525	1	7
				1264-2414	33525	15	42

**Section IV. INDEX FEDERAL STOCK NUMBER AND REFERENCE NUMBER
CROSS-REFERENCE TO FIGURE AND ITEM NUMBER**

<u>REFERENCE NO.</u>	<u>MFG CODE</u>	<u>FIG NO.</u>	<u>ITEM NO.</u>	<u>REFERENCE NO.</u>	<u>MFG CODE</u>	<u>FIG NO.</u>	<u>ITEM NO.</u>
1264-2416	33525	15	24	241014	33525	10	25
1563-0606	33525	12	25		33525	11	29
1563-0810	33525	3	33	241054	33525	6	17
	33525	3	43	241055	33525	6	18
17309	33525	3	47	241056	33525	7	14
	33525	3	50	241057	33525	9	12
1904-1136	33525	2	1	241059	33525	8	14
203644	33525	5	15	241064	33525	9	2
203645	33525	5	14	241068	33525	9	23
203646	33525	5	12	204033	33525	2	6
203673	33525	8	11	241109	33525	3	9
203692	33525	9	26	241193	33525	15	38
204066	33525	2	3	241240	33525	3	54
204068	33525	2	5	241893	33525	12	19
	33525	2	7	241898	33525	5	10
204070	33525	2	4		33525	7	11
204143	33525	10	20	341922	33525	12	20
204190	33525	12	14	241929	33525	12	32
204385	33525	3	15	242091	33525	9	21
204387	33525	3	11	242842	33525	6	5
204388	33525	3	10		33525	7	5
20539	33525	3	12	243472	33525	12	26
205872	33525	9	3	244452	33525	12	17
206340	33525	12	6	247044	33525	14	27
206507	33525	6	4		33525	14	29
	33525	7	4	247048	33525	14	6
206508	33525	6	12	247049	33525	14	5
	33525	7	12	247056	33525	14	30
206511	33525	7	13	247051	33525	14	15
206512	33525	7	17	247053	33525	14	12
206519	33525	6	15	247093	33525	14	20
206523	33525	9	20	247095	33525	14	14
206524	33525	6	16	347132	33525	14	26
206528	33525	8	4	247137	33525	14	34
206530	33525	8	13	247162	33525	14	23
206534	33525	8	12	247163	33525	14	17
206535	33525	8	17	247298	33525	15	18
206540	33525	5	9	247315	33525	14	32
206549	33525	9	1	248042	33525	14	28
206650	33525	12	23	248097	33525	14	10
206780	33525	3	14	248098	33525	14	9
206782	33525	3	8	248099	33525	14	18
206837	33525	4	28	248417	33525	10	11
206838	33525	4	29	248517	33525	13	5
206841	33525	4	25	249525	33525	14	25
206844	33525	4	18	250588	33525	4	21
206845	33525	4	17	250589	33525	4	22
206846	33525	4	7	250865	33525	4	9
206847	33525	4	2	251507	33525	12	33
	33525	4	4	251571	33525	15	41
	33525	4	6	253656	33525	10	12
206848	33525	4	14	253720	33525	15	3
206849	33525	4	11	253721	33525	13	9
206851	33525	4	24	253722	33525	14	3
	33525	4	27	254010	33525	15	36
206852	33525	4	19	254366	33525	15	37
206853	33525	4	10	254914	33525	8	16
206869	33525	3	35	254917	33525	7	16
206898	33525	3	5	254956	33525	6	7
207	81130	16	74		33525	7	6
207191	33525	9	5	254957	33525	6	8
207298	33525	15	13		33525	7	7
20799	33525	3	45	254958	33525	6	9
208551	33525	12	16		33525	7	8
209756	33525	12	21	254959	33525	8	6
209921	33525	5	11	254960	33525	8	7
209922	33525	5	10	254961	33525	8	8
209923	33525	6	6	254994	33525	9	14
	33525	7	10	254995	33525	9	13
209925	33525	8	9	255038	33525	3	18
210000	33525	8	5	255047	33525	9	6
211958	33525	7	15	255048	33525	9	6
211959	33525	8	15	255049	33525	9	6
212828	33525	14	24	255059	33525	9	10
213072	33525	3	35	255060	33525	9	10
213241	33525	12	31	255061	33525	9	10
314394	33525	14	2	255062	33525	9	8
214732	33525	14	13	255063	33525	9	8
214751	33525	14	11	255064	33525	9	8
214752	33525	14	19	255067	33525	3	30
214757	33525	14	8	255078	33525	9	18
240619	33525	12	11	255079	33525	9	18

**Section IV. INDEX FEDERAL STOCK NUMBER AND REFERENCE NUMBER
CROSS-REFERENCE TO FIGURE AND ITEM NUMBER**

<u>REFERENCE NO.</u>	<u>MFG CODE</u>	<u>FIG NO.</u>	<u>ITEM NO.</u>	<u>REFERENCE NO.</u>	<u>MFG CODE</u>	<u>FIG NO.</u>	<u>ITEM NO.</u>
255080	33525	9	18	873483	33525	3	37
255146	33525	5	8	875066	33525	4	20
255147	33525	5	7	875498-1700	33525	10	19
255148	33525	5	6	875711	33525	10	32
255200	33525	5	3	875766	33525	10	31
255288	33525	4	16	876017	33525	14	38
270558	33525	6	11	876048	33525	3	13
270562	33525	8	10	876071	33525	3	23
270583	33525	7	9	876099	33525	7	18
270593	33525	4	26	876101-1700	33525	11	20
276381	33525	12	9	894518-0013	33525	12	
276482	33525	12	28	894518-1700	33525	12	
277361	33525	15	47	894528	33525	3	46
277362	33525	15	46	894529	33525	10	13
277363	33525	15	6	894544	33525	13	18
277364	33525	15	27	894833	33525	1	9
277365	33525	15	11	894859	33525	5	4
277405	33525	14	33	894860	33525	6	3
277941	33525	9	16	894861	33525	7	3
277976	33525	3	27	894862	33525	8	3
279	02777	16	24	894863	33525	9	29
279075	33525	3	36	894911	33525	4	4
279076	33525	15	32	894913	33525	9	28
279607	33525	15	45	894957	33525	3	19
	33525	17	38	894958	33525	3	16
391876	33525	12	34	895043	33525	15	19
292129	33525	3	29	9014DDC3G91	43991	16	68
292149	33525	9	17	9020DDF5	43991	16	4
292167	33525	6	18	9025DDC3G75	43991	16	69
292177	33525	5	16	9099DDF5	43991	16	13
292178	33525	4	23		43991	16	15
292190	33525	5	5	9105K	21335	9	25
292722	33525	3	4		21335	9	27
292723	33525	3	7	9270A257	06540	18	15
31515	33525	14	16				
33RJE1200NG516	88419	17	30				
4304	33525	12	22				
453698	24617	16	47				
5-193	03818	14	21				
5000-185	79136	16	3				
5100-78	79136	16	2				
5129-0608	33525	15	16				
	33525	15	30				
5129-0609	33525	15	4				
5129-0808	33525	10	9				
	33525	13	3				
5129-1107	33525	15	33				
5129-1109	33525	15	8				
5129-1110	33525	15	22				
5303-0500	33525	3	17				
5304-0400	33525	12	24				
5304-0400	33525	12	29				
5304-0600	33525	3	24				
5386-0001	33525	5	2				
5540-0119	33525	14	35				
	33525	14	37				
5608-0006	33525	15	7				
5833-0832	33525	6	1				
5833-1012	33525	3	20				
5833-1124	33525	8	1				
5833-1132	33525	7	1				
5847-0600	33525	15	1				
	33525	15	14				
	33525	15	28				
5847-0800	33525	10	7				
	33525	13	1				
5847-1100	33525	15	20				
5847-1700	33525	10	21				
600397G0300X4	56289	17	37				
7402815	19207	16	52				
7538889	19207	16	54				
801400	33525	12	12				
802259	33525	3	40				
841665	33525	12	27				
843895	33525	5	13				
843939	33525	8	18				
850	04633	12	18				
871612	33525	4	31				
872371	33525	9	24				
873004	33525	6	19				
873481	33525	3	48				
873482	33525	3	39				

<u>STOCK NUMBER</u>	<u>GROUP NUMBER</u>
4310-107-1071	05
4310-360-1645	01
4310-406-8585	01
6105-432-1579	04

<u>REFERENCE NO.</u>	<u>MFG. CODE</u>	<u>GROUP NUMBER</u>
A9510-1	72121	04
B2455	72121	04
B36937	07860	04
C1594	72121	04
MS11DA4-1	07860	04
804481	33525	05
804587	33525	05
804588	33525	05
804589	33525	05
804590	33525	05
894518-0013	33525	02
894518-1700	33525	02
894844	33525	01
894911	33525	01

By Order of the Secretary of the Army:

Official:

W. C. WESTMORELAND,
General, United States Army,
Chief of Staff

VERNE L. BOWERS,
Major General, United States Army,
The Adjutant General.

Distribution:

To be distributed in accordance with DA Form 12-37 (qty rqr block no. 171)
Direct and General Support Maintenance requirements for Armored Reconnaissance
Airborne Assault Vehicle, XM551.

TM 5-4310-343-34P

PIN: 026839-000